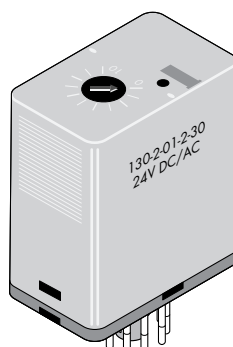


# Time Relay Universal 130

## Time Relay Universal 130

- Time relay for relay universal series
- 2 C/O



## Order Code

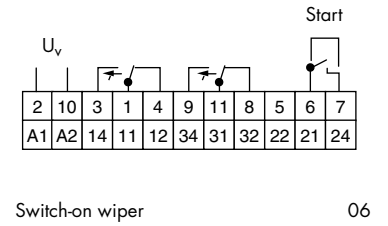
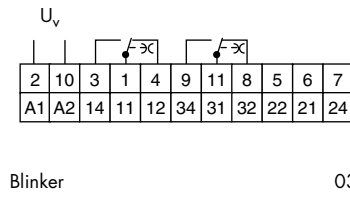
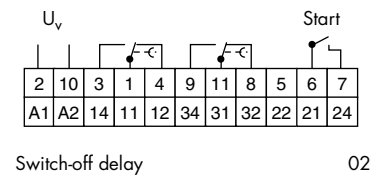
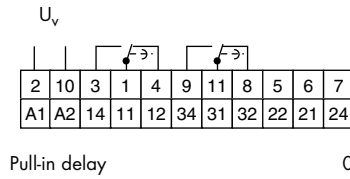
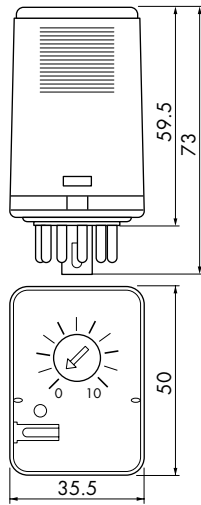
<b>Order code</b>	<b>130</b>	<b>-</b>	<b>2</b>	<b>-</b>	<b>01</b>	<b>-</b>	<b>2</b>	<b>-</b>	<b>3</b>	<b>-</b>	<b>24 VDC/AC</b>
Type of relay	130										
Contact arrangement											
2 C/O			2								
Function											
01 Pull-in delay					01						
02 Switch-off delay					02						
03 Blinker					03						
06 Switch-on wiper					06						
Connection diagram											
2 11 pole							2				
Nominal time range / Impulse frequency											
3 0.1 - 3 s approx.									3		
30 0.5 - 30 s approx.									30		
180 2.0 - 180 s approx.									180		
600 4.0 - 600 s (on request)									600		
for function 03											
50 5 - 50 pulses/min approx.									50		
200 40 - 200 pules/min approx.									200		
Nominal voltage											
24 VDC/AC											24 VDC/AC
110 VAC											110 VAC
230 VAC											230 VAC

## Contact Data

	<b>130</b>
Contact arrangement	2 C/O
Type of contact	Single contact
Contact material	AgCdO
Nominal contact current	8 A
Inrush current	≤ 15 A
Nominal contact voltage	250 VAC
Max. switching capacity	2000 VA
Min. switching capacity	100 mA / 5 VDC

# Time Relay Universal 130

## Dimensions, Connection Diagram(s)



## General Data

	130
Mechanical service life	> 5 x 10 <sup>6</sup> switching cycles
Electrical service life	> 1 x 10 <sup>5</sup> switching cycles
Test voltage	
Inputs - contact	2500 VAC
Insulation group VDE 0110b/2.79	C250
Ambient temperature	0 °C to +40 °C
Weight	approx. 60 g
Operating range	DC / AC Class 1 0.8 - 1.1 U <sub>N</sub>
Pull-in after coil excitation with U <sub>N</sub> at T <sub>U</sub>	20 °C
Nominal frequency	40 - 60 Hz
Rated power	0.8 W

## Control Circuit

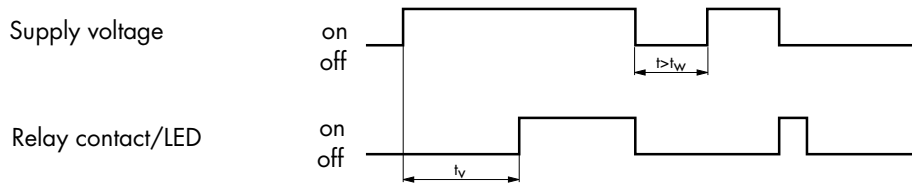
Relay	130 ... 01, 130 ... 03, 130 ... 06	130 ... 02
Contact voltage	Supply voltage	≤ 15 V
Contact current	≤ 150 mA	≤ 15 mA
Contact load	approx. 1 VA	≤ 0.2 W
Input impedance	approx. 180 Ω	1 kΩ
Pulse duration		≤ 70 ms

# Time Relay Universal 130

## Function

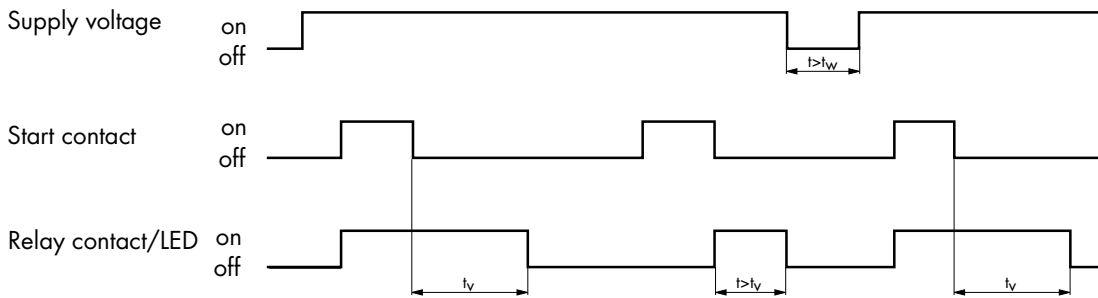
### Pull-in delay 01

#### Switching with supply voltage



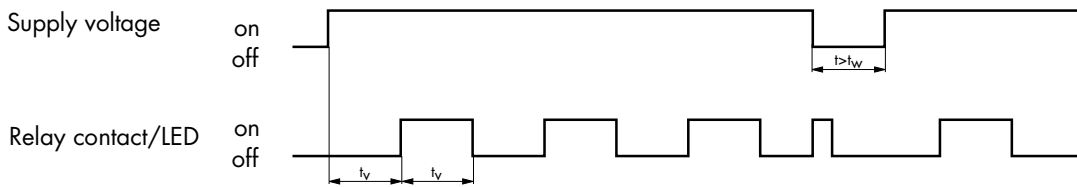
### Switch-off delay 02

#### Switching with start contact



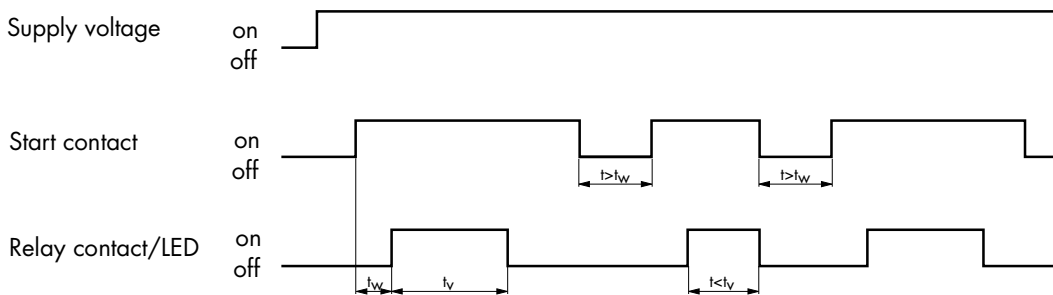
### Blinker 03

#### Switching with supply voltage



### Switch-on wiper 06

#### Switching with start contact



#### Switching with supply voltage

