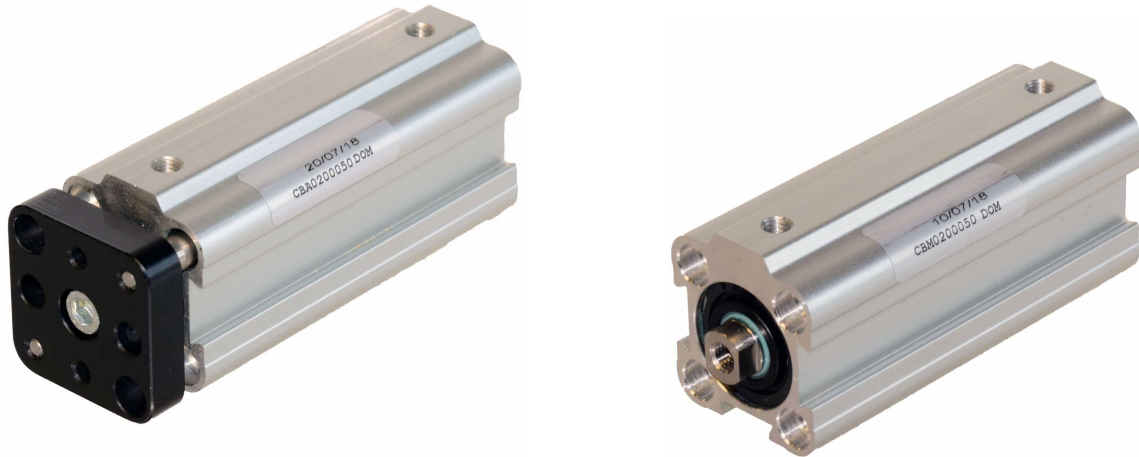


CB Pneumatic Cylinder Ø 16mm - 100mm

General Information

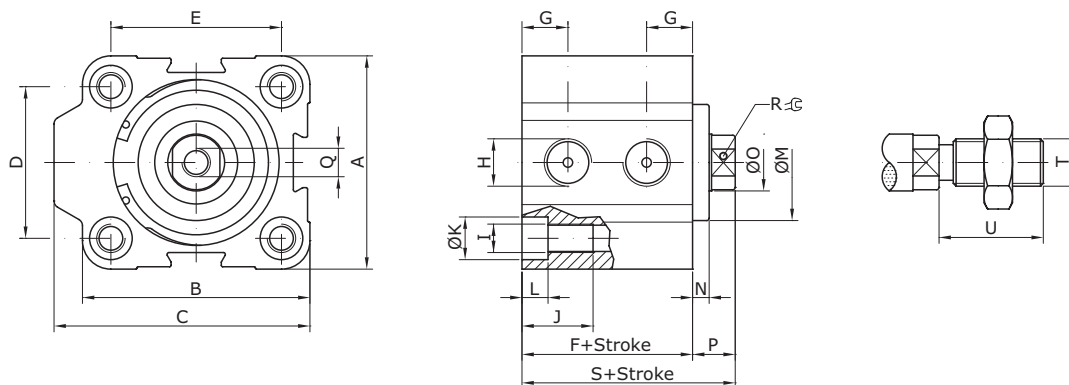


Technical Data

Piston diameters:	Ø 16, 20, 25, 32, 40, 50, 63, 80, 100 (mm)									
Ports:	Ø 16, Ø 20 = M5; Ø 25, Ø 32, Ø 40, Ø 50, Ø 63 = G1/8; Ø 80, Ø 100 = G1/4									
Covers:	Anodised aluminum alloy									
Piston rod (Ø 16 - 32):	Chromium plated stainless steel (stainless steel AISI 304)									
Piston rod (Ø 40 - 100):	C45 chromium plated steel									
Piston (Ø 16 - 32):	Neodymium									
Piston (Ø 40 - 100):	Plastoferrite									
Tube:	Anodised aluminum alloy									
Piston and piston rod:	PUR piston and piston rod (Viton® upon request)									
Other seals:	NBR									
Operating medium:	Compressed air, dry, lubricant not necessary									
Pressure range:	1.5 - 10 bar									
Operating temperature:	NBR/PUR seals: -10 °C to +70 °C Viton® seals: -10 °C to +150 °C									
Force at 6 bar:	Ø	16	20	25	32	40	50	63	80	100
	N [push]	115	175	280	470	730	1.140	1.820	2.950	4.600
	N [pull]	85	135	245	400	660	1.000	1.700	2.660	4.300

Impulse Automation Limited
United Kingdom
Company Registration 665193

Dimensional Drawing



Ø	A	B	C	D	E	F	G	H	I	J	ØK	L	ØM	N	ØO	P	Q	R	S	T	U
16	28	28	31	20	20	31	8	M5	M4	15	6	3.5	-	-	8	4.5	M5x7	7	36	M6	18
20	32	32	35	22	22	31	8.5	M5	M5	15	7	4.5	-	-	10	4.5	M5x7	8	36	M8	20
25	38	39	44.5	26	28	33	9	G1/8	M5	15	7	4.5	-	-	10	5.5	M5x7	8	39	M8	20
32	45	48	54	32	36	36	9.7	G1/8	M6	15	9	5.5	24.5	3.5	12	9	M6x12	10	45	M10x1.25	22
40	54.5	54.5	60	40	40	41	11.5	G1/8	M6	15	9	5.5	30	5.5	12	12	M6x12	10	53	M10x1.25	22
50	65	65	72.5	50	50	42	11.5	G1/8	M8	20	11	6.5	35	5.5	16	13	M8x16	13	55	M12x1.25	24
63	80	80	88	62	62	42	12	G1/8	M10	20	13.5	9	35	6.5	16	15	M8x16	13	57	M12x1.25	24
80	100	100	110	82	82	52	14	G1/4	M10	25	13.5	9	44	10	25	18	M10x18	22	70	M20x1.5	32
100	124	124	134	103	103	62	15	G1/4	M12	30	17	11	56	10	25	20	M12x20	22	82	M20x1.5	32

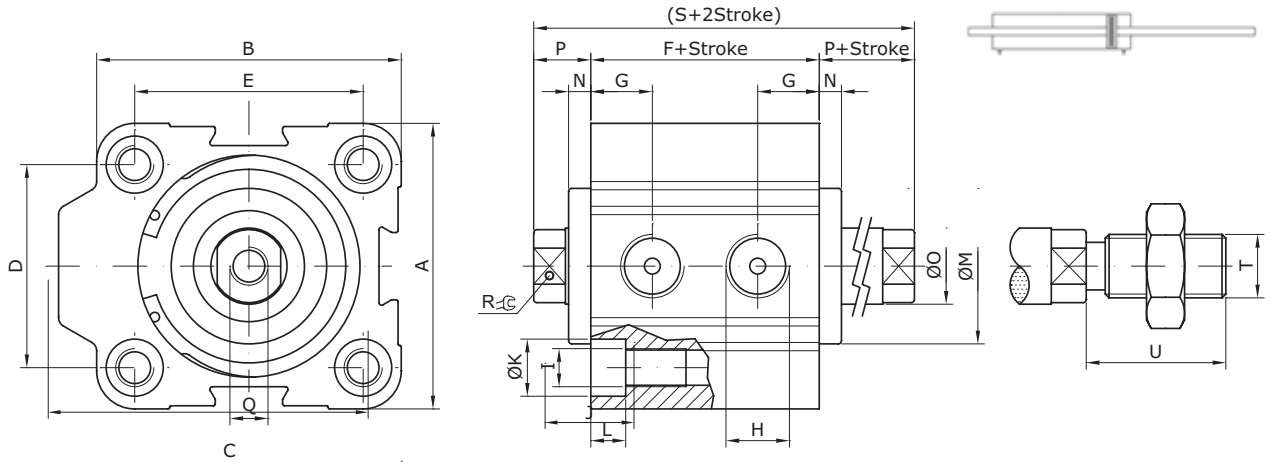
Order Code

Order specifications	CB	M.	032.	050.	DOM
Series Number	CB				
Design					
	magnetic	M			
	non-magnetic	S			
	torsion protected (magnetic)	A			
	torsion protected (non-magnetic)	B			
Piston diameter					
	Ø 16		016		
	Ø 20		020		
	Ø 25		025		
	Ø 32		032		
	Ø 40		040		
	Ø 50		050		
	Ø 63		063		
	Ø 80		080		
	Ø 100		100		
Stroke					
	mm			xxx	
Version					
	double acting				DOM
	single acting				SOM
Design					
	standard (female threaded piston rod)				-
	through piston rod (female threaded)				1
	tandem				2
	back-to-back				3
	stainless steel piston rod				4
	viton® seals (non-magnetic)				8
	male threaded piston rod				9
Special versions	CB	M	ddd	xxx	zzzz

zzzz = project no. (added by factory)

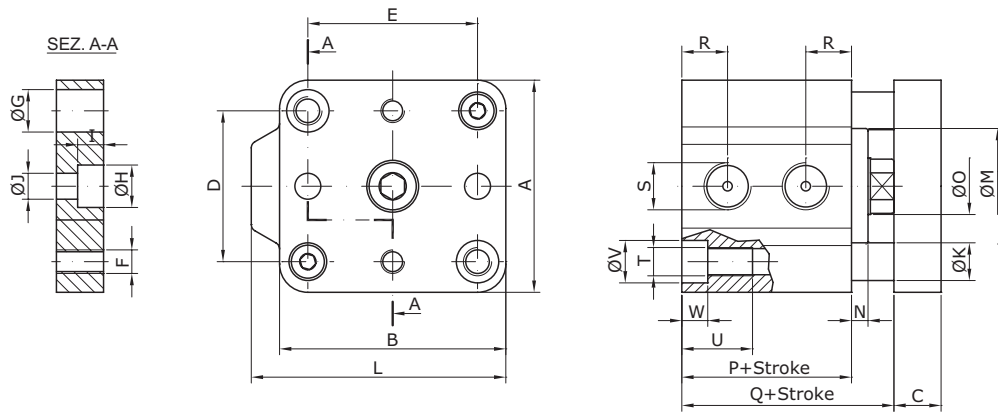
Information shown in these data sheets are for guidance purposes only, no liability is accepted for any errors or omissions. The designer or user is solely responsible for the safe and proper use of these parts, assemblies or equipment described.

Through Piston Rod



Ø	A	B	C	D	E	F	G	H	I	J	ØK	L	ØM	N	ØO	P	Q	R	S	T	U
16	28	28	31	20	20	31	8	M5	M4	15	6	3.5	-	-	8	4.5	M5x7	7	40	M6	18
20	32	32	35	22	22	31	8.5	M5	M5	15	7	4.5	-	-	10	4.5	M5x7	8	40	M8	20
25	38	39	44.5	26	28	33	9	G1/8	M5	15	7	4.5	-	-	10	5.5	M5x7	8	44	M8	20
32	45	48	54	32	36	36	9.7	G1/8	M6	15	9	5.5	24.5	3.5	12	9	M6x12	10	54	M10x1.25	22
40	54.5	54.5	60	40	40	41	11.5	G1/8	M6	15	9	5.5	30	5.5	12	12	M6x12	10	65	M10x1.25	22
50	65	65	2.5	50	50	42	11.5	G1/8	M8	20	11	6.5	35	5.5	16	13	M8x16	13	68	M12x1.25	24
63	80	80	88	62	62	42	12	G1/8	M10	20	13.5	9	35	6.5	16	15	M8x16	13	72	M12x1.25	24
80	100	100	110	82	82	52	14	G1/4	M10	25	13.5	9	44	10	25	18	M10x18	22	88	M20x1.5	32
100	124	124	134	103	103	62	15	G1/4	M12	30	17	11	56	10	25	20	M12x20	22	102	M20x1.5	32

Short Stroke Cylinders - Double Acting & Torsion Protected Type

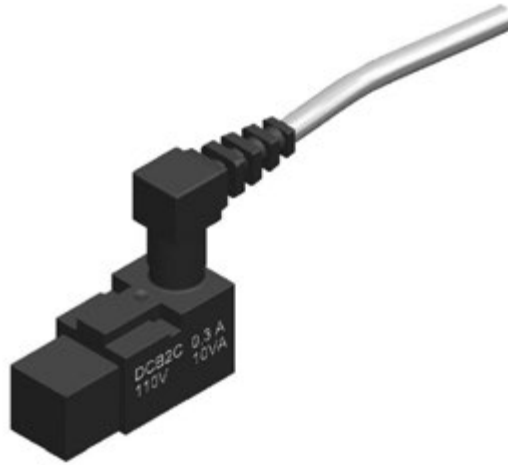


Ø	A	B	C	D	E	F	ØG	ØH	I	ØJ	ØK	L	M	ØN	ØO	P	Q	R	S	T	U	ØV	W
16	28	28	8	20	20	M3	6	6	3.5	3.5	4	32	-	-	8	31	35.5	8	M5	M4	15	6	3.5
20	32	32	8	22	22	M4	7	7.5	4.5	4.5	6	35	-	-	10	31	35.5	8.5	M5	M5	15	7	4.5
25	38	39	8	26	28	M4	7	7.5	4.5	4.5	6	44.5	-	-	10	33	38.5	9	G1/8	M5	15	7	4.5
32	45	48	10	32	36	M5	10	9	5.5	5.5	8	54	3.5	24.5	12	36	45	9.7	G1/8	M6	15	9	5.5
40	54.5	54.5	10	40	40	M5	10	9	5.5	5.5	8	60	5.5	30	12	41	53	11.5	G1/8	M6	15	9	5.5
50	65	65	12	50	50	M6	12	11	6.5	7	10	72.5	5.5	35	16	42	55	11.5	G1/8	M8	20	11	6.5
63	80	80	12	62	62	M6	14	11	6.5	7	10	88	6.5	35	16	42	57	12	G1/8	M10	20	13.5	9
80	100	100	15	82	82	M8	14	14	8.5	8.5	12	110	10	44	25	52	70	14	G1/4	M10	25	13.5	9
100	124	124	15	103	103	M8	17	14	8.5	8.5	12	134	10	56	25	62	82	15	G1/4	M12	30	17	11

Information shown in these data sheets are for guidance purposes only, no liability is accepted for any errors or omissions. The designer or user is solely responsible for the safe and proper use of these parts, assemblies or equipment described.

Position Transmitter REED (2 pole with plug connector)

Switching capacity: max 10 VA
Switching current: max 300 mA
Switching voltage: 3 - 110 V AC/DC
Switching time: 0.6 ms
Housing material: plastic
Ambient temperature range: -10°C to +70°C



Code	Description
GA4MM	with cable L = 2000 mm

The shipment include the brackets to insert the position transmitter in the groove.