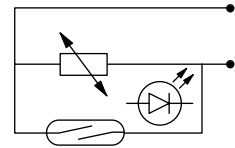


CNOMO Cylinder Sensor & Seal Kits

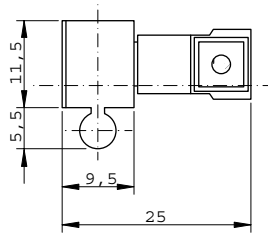
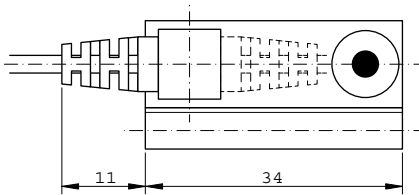
REED Type Sensor

Position Transmitter REED (2 wires)

Switching output:	N.O.
Switching capacity:	Max. 10 VA
Switching voltage:	3-230 V AC/DC
Switching current:	Max. 500 mA
Switching time:	0.5 ms
Service life:	107 operations, depending on the load
Housing material:	Plastic
Protection class:	IP67
Temperature range:	-20°C to +85°C
Status indicator:	LED



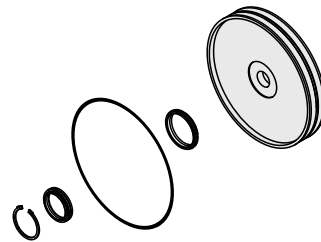
Dimensional drawings



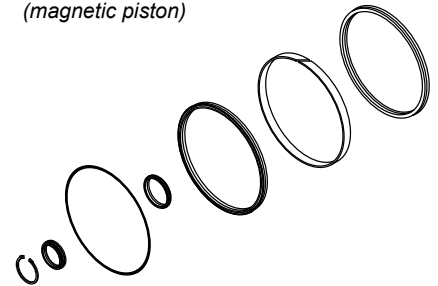
Code	Description
33.18.115	with cable L = 3000 mm

Order fastening clamps separately

Seal Kit for A Versions (non-magnetic piston)



Seal Kit for C Versions (magnetic piston)



Fastening Clamps

Ø	Code
32	33.009.08
40	
50	
63	
80	33.009.09
100	
125	
160	
200	

Ø	Code
32	SG.032A.DOM
40	SG.040A.DOM
50	SG.050A.DOM
63	SG.063A.DOM
80	SG.080A.DOM
100	SG.100A.DOM
125	SG.125A.DOM
160	SG.160A.DOM
200	SG.200A.DOM
250	SG.250A.DOM
320	SG.320A.DOM

Ø	Code
32	SG.032C.DOM
40	SG.040C.DOM
50	SG.050C.DOM
63	SG.063C.DOM
80	SG.080C.DOM
100	SG.100C.DOM
125	SG.125C.DOM
160	SG.160C.DOM
200	SG.200C.DOM
250	SG.250C.DOM
320	SG.320C.DOM

Impulse Automation Limited
United Kingdom
Company Registration 665193