

TECHNICAL DATASHEET

EX Heavy Duty Absolute AX 65 - CANopen



- Extreme Robust Explosionproof absolute Multiturn Encoder
- ATEX and IECEx certification for Mining, Gas and Dust
- 300 N axial and radial load
- Extreme shock and vibration resistant: 200 g shock; 30 g vibration
- Most compact design of its class: 70 mm mounting depth; 59 mm diameter
- Different terminal boxes with cage clamp terminals
- Easy and fast field installation: access to DIP switches
- Protection class up IP66/ IP67
- Extreme corrosion resistance: high grade stainless steel housing (1.4404)
- Applications: Winch, enamelling production line, petro chemistry, bottling machines, mixers, silo works, mills, cranes, drilling equipment

ACURO®
Xproof



ATEX



CANopen



EX-CLASSIFICATION

The robust absolute shaft encoder line ACURO-XR is available in explosion proof design with explosion proof enclosure "Ex d" under AX 65.

It has been assured with the EC-TYPE-Examination Certificate IBEU10ATEX1172 X that the AX65 meets the requirements of safety and health according to EN 60079-0:2014-06, EN 60079-1:2015-04 and EN 60079-31:2014-12.

Additionally the encoder is certified according the IECEx standards IEC 60079-0:2011, ed. 6; IEC 60079-1:2014-6, ed. 7 and IEC 60079-31:2013, ed. 2. Assured according IECEx IBE 12.0017X certification.

Therefore it is approved in explosive areas,

Explosion protection classification

Gas: Ex II 2G Ex db IIC T4

Dust: Ex II 2D Ex tb IIIC T135 °C

Mining: Ex I M2 Ex db I

The AX 65 comes with a stainless steel housing. So its suitable for offshore applications, applications under tough environmental conditions and food industry.

TECHNICAL DATA mechanical

Housing diameter	59 mm
Shaft diameter	10 mm (Solid shaft)
Flange (Mounting of housing)	Synchro clamping flange
Protection class shaft input (EN 60529/ A1:2000-02)	IP66/ IP67
Protection class housing (EN 60529/ A1:2000-02)	IP66/ IP67
Shaft load axial / radial	max.: 300 N / 300 N
Max. speed	at +60 °C Ambient temperature: 700 rpm, 6000 rpm (short term <1sec) at +40 °C Ambient temperature: 2200 rpm, 6000 rpm (short term <1sec)

Specifications subject to change without notice.

Doc No: AE0031 Rev: 001	Impulse Automation Limited United Kingdom Company Registration 665193	Page
Edition: 3 200116 TK		1/5

TECHNICAL DATASHEET
EX Heavy Duty Absolute AX 65 - CANopen
TECHNICAL DATA
Mechanical (continued)

Nominal speed	1500 rpm
Starting torque typ.	≤ 4,5 Ncm
Moment of inertia	Approx. 25 gcm ²
Vibration resistance (DIN EN 60068-2-6:2008)	300m/s ² (50 ... 2000Hz)
Shock resistance (DIN EN 60068-2-27:2010)	2000m/s ² (3ms)
Ambient temperature	-40°C ... +60°C Ex db IIC T4 -40°C ... +60°C Ex tb IIIC T135°C / Ex db I
Storage temperature ¹	-20°C ... +85°C
Material Housing	Stainless Steel (1.4404)
Weight	1300g approx. (without cable)
Connection ²	Terminal box with 1 x M20x1,5 screw thread , axial or radial Terminal box with 2 x M20x1,5 screw thread, radial

¹ due to packing

² without cable gland

TECHNICAL DATA
electrical

Supply voltage	DC 10 - 30V
Current w/o load max.	200 mA
Recommended external fuse	T 0,2 A
Power consumption	Max. 2 W
Resolution singleturn	12 Bit
Resolution multiturn	12 Bit, 16 Bit
Output code	Binary
Profile/ Protocol	CANopen according to DS 301 with profile DSP 406
Programmable	Resolution, Preset, Offset, Direction
Parametrization	Speed, Acceleration, Limit values, Operating time
Baud rate	Set via DIP switches in the range of 10 to 1.000 Kbit/s (standard setting EX-Works: 250 Kbit/s)
Bus termination resistor	Set via DIP switches
Updating of values	Every millisecond (adjustable), on request
Basic identifier (11 Bit)	Set via DIP switches or Software
Absolute accuracy	±1°
Repeatability	±0,2°

Specifications subject to change without notice.

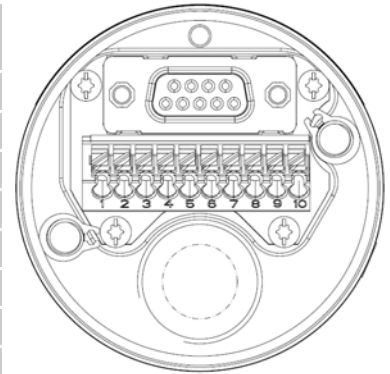
Doc No: AE0031 Rev: 001	Impulse Automation Limited United Kingdom Company Registration 665193	Page
Edition: 3 200116 TK		2/5

TECHNICAL DATASHEET

EX Heavy Duty Absolute AX 65 - CANopen

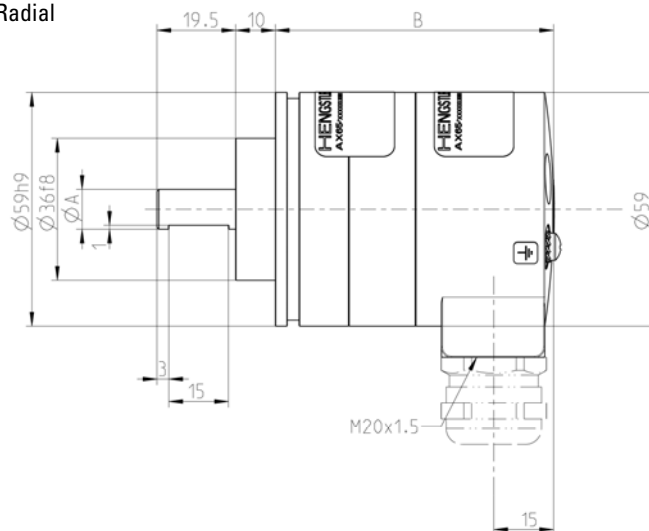
ELECTRICAL CONNECTIONS CANopen

Color / printed numbers	Terminal block	Signal
white / 1	1	U in 10...30V DC
brown / 2	2	0V (GND Power supply)
green / 3	3	CAN in -
yellow / 4	4	CAN in +
grey / 5	5	CAN out -
pink / 6	6	CAN out +
blue / 7	7	GND in
red / 8	8	GND out
	9	Not connected
	10	PE
Screen	cable screen connected to housing	
Terminal screw	for additional connection of an earth conductor	

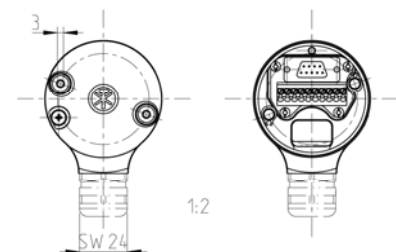
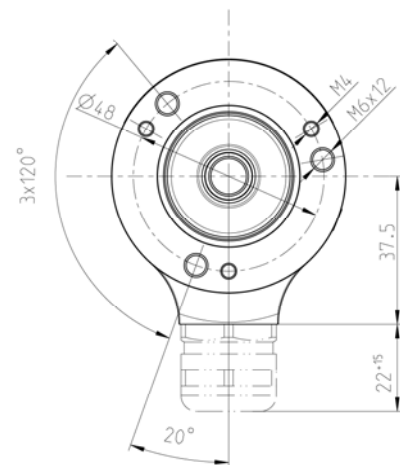


DIMENSIONED DRAWINGS

Connection: Radial



Montage/Schutzart/Wellen-Code Mounting/Protection/Shaft-Code	ØA	Elektrische Schnittstelle Electrical Interface	B
L.72	10f8	SSI	70
		Canopen	70



Empfohlene Gewindelaenge der Kabelverschraubung: 14mm
Recommended thread length of cable gland: 14mm

Dimensions in mm

Specifications subject to change without notice.

Doc No: AE0031 Rev: 001	Impulse Automation Limited United Kingdom Company Registration 665193	Page
Edition: 3 200116 TK		3/5

Art. No.: 2 569 029

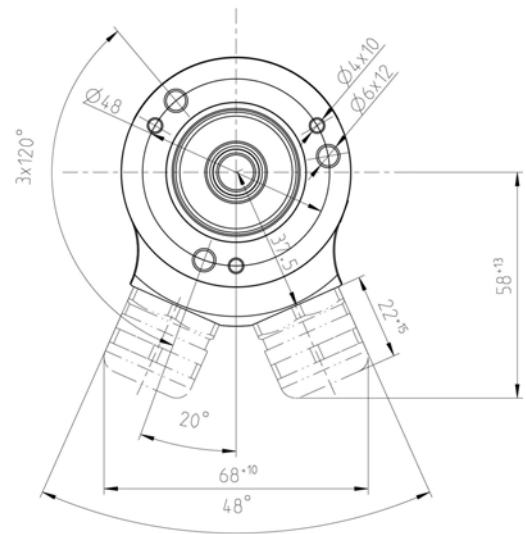
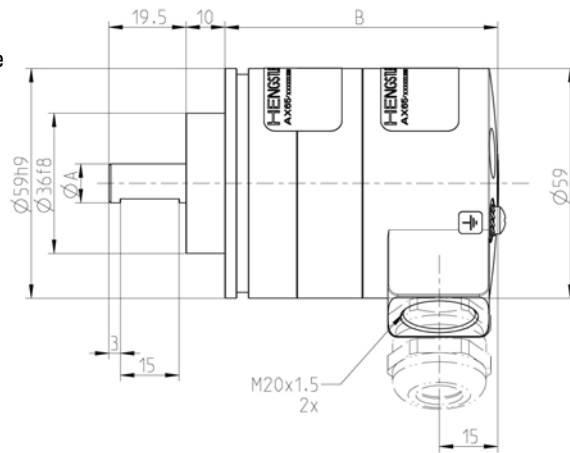
Information shown in these data sheets are for guidance purposes only, no liability is accepted for any errors or omissions.
The designer or user is solely responsible for the safe and proper use of these parts, assemblies or equipment described.

TECHNICAL DATASHEET

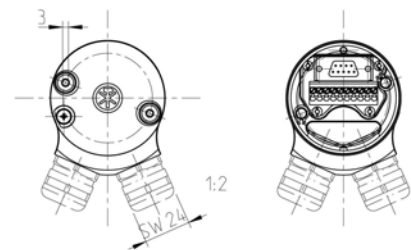
EX Heavy Duty Absolute AX 65 - CANopen

DIMENSIONED DRAWINGS (continued)

Connection:
Radial double



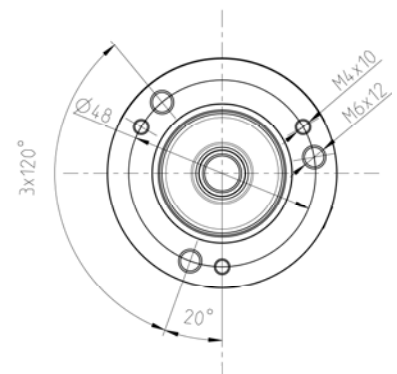
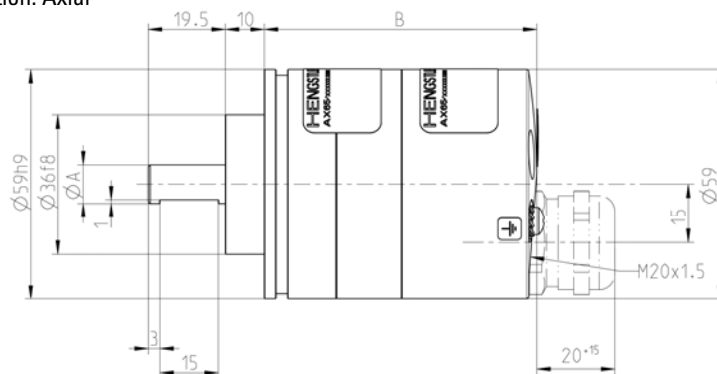
Montage/Schutzart/Wellen-Code Mounting/Protection/Shaft-Code	Ø A	Elektrische Schnittstelle Electrical Interface	B
L.72	10f8	SSI	70
		Canopen	70



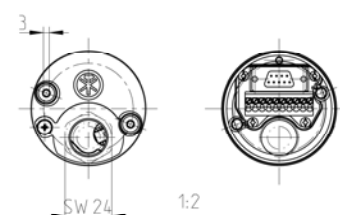
Empfohlene Gewindelänge der Kabelverschraubungen: 14mm
Recommended thread length of cable glands: 14mm

Dimensions in mm

Connection: Axial



Montage/Schutzart/Wellen-Code Mounting/Protection/Shaft-Code	Ø A	Elektrische Schnittstelle Electrical Interface	B
L 72	10 f8	SSI	70
		Canopen	70



Empfohlene Gewindelänge der Kabelverschraubung: 14mm
Recommended thread length of cable gland: 14mm

Dimensions in mm

TECHNICAL DATASHEET

EX Heavy Duty Absolute AX 65 - CANopen

ORDERING INFORMATION CANopen

Type	Resolution	Supply voltage	Flange, Protection, Shaft	Interface	Connection
<input type="text"/> / <input type="text"/>	<input type="text"/>	<input type="text"/>	<input type="text"/>	<input type="text"/>	<input type="text"/>
AX65	0012 12 Bit ST 1212 12 Bit ST + 12 Bit MT 1612 12 Bit ST + 16 Bit MT	E DC 10 - 30 V	L.72 Synchro clamping, IP66/ IP67, 10 mm	0L CANopen	0 1 x M20x1,5 screw thread, axial 1 1 x M20x1,5 screw thread, radial 2 2 x M20x1,5 screw thread, radial

Specifications subject to change without notice.

Doc No: AE0031 Rev: 001	Impulse Automation Limited United Kingdom Company Registration 665193	Page
Edition: 3 200116 TK		5/5