

Pneumatic Visual Indicator

Lens Type - Programmable Panel Mounting


Technical information

Pressure range: 25 to 150 PSI (Detent mode) 45 to 150 PSI (spring mode).
Temperature range: 35°F... 150°F
Materials: Acrylic lens, acetal housing (glass filled), buna N seals.
Operating medium: 5 micron filtered non-lubricated compressed air.



Other information

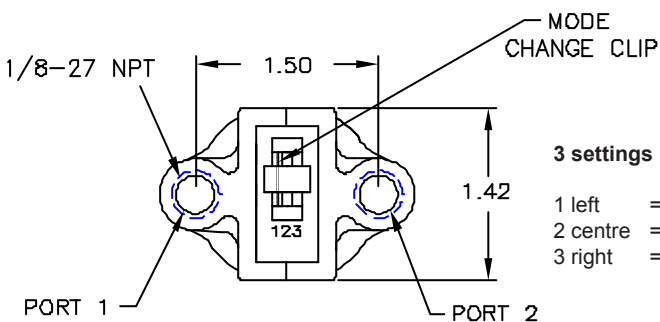
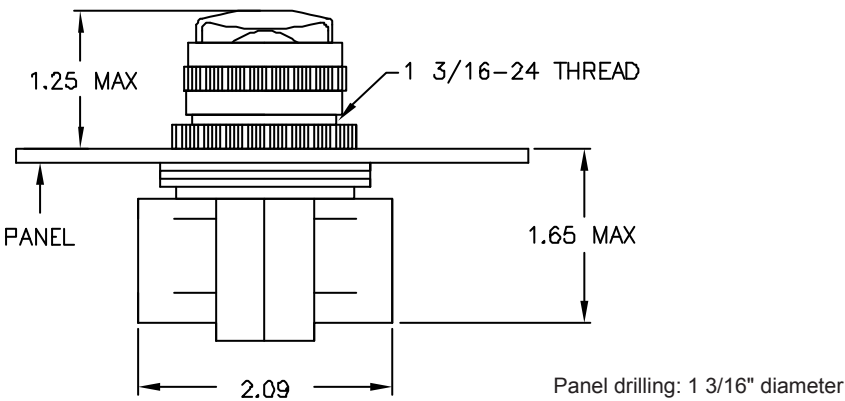
Lens and ball indication, designed for indirect 180° viewing.
 For full dimensional drawings see document EK0005.

Symbol	Description	Ports	Colour	Order code
	Visual indication of air pressure	1/8 NPT	See options	15NF1-XXX

Dimensional drawings

The rear of the indicator has two ports, by moving an adjacent clip, the indicator will operate with a pressure/no pressure indication, or with the use of a second port will remain in its switched position until a second signal is applied returning the indicator to its original position.

For detent mode set the spring clip to its central position and connect the ports respectively.



- 3 settings**
- 1 left = spring return - port 1
 - 2 centre = detented - ports 1 & 2
 - 3 right = spring return - opposite colour port 2

Indicator colour options:

- Red to Green 15NF1-RG
- Green to Black 15NF1-GBK
- Red to Black 15NF1-RBK
- Yellow to Black 15NF1-YBK
- Amber to Black 15NF1-ABK
- Amber to Green 15NF1-AG
- Black to white 15NF1-BKW
- Green to White 15NF1-GW

Spare parts:

- Lens 3028
 - Mounting nut 1074
 - Sphere NF5-XXX
- Insert colour code**

Impulse Automation Limited
United Kingdom
Company Registration 665193