

Pneumatic Timer - 52.SB Series

Set and Forget Timer - M5 Bottom Ported

Technical information

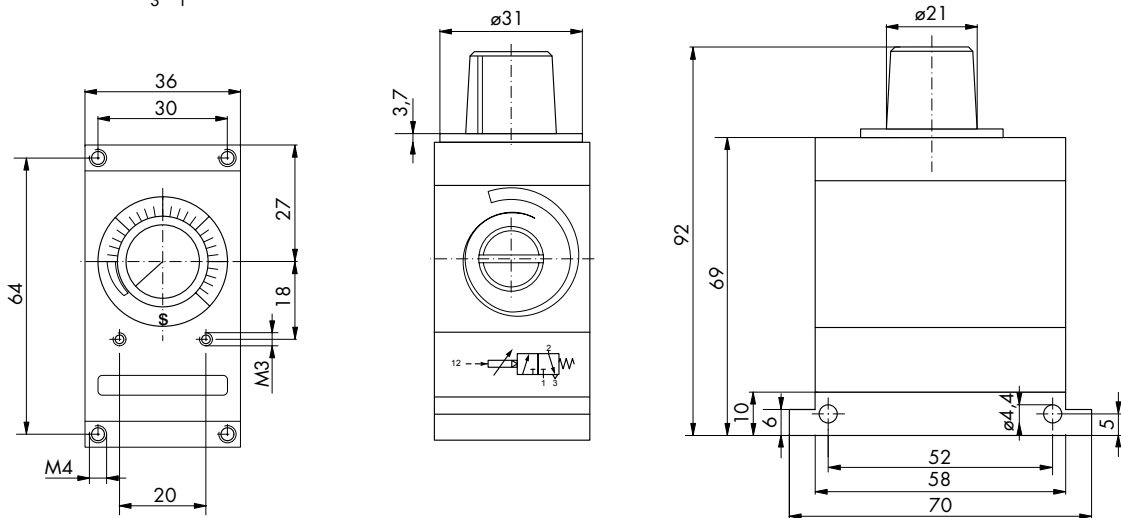
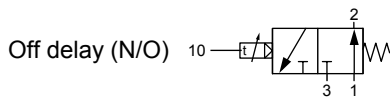
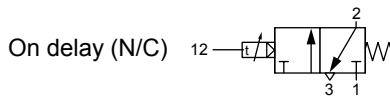
Pressure range:	1.5-8 bar, port 1 pressure must not exceed control port pressure at 12 or 10
Temperature range:	-10°C...+60°C (Subject to moisture removal)
Mounting:	Panel mount via M3 holes or subplate mount via M4 holes
Time setting:	Via front dial knob 270° rotation, infinite throughout respective time range
Repeatability:	+/- 2% of the selected time delay
Reset:	Automatic by removal of control port pressure 12 or 10
Reset time:	< 300 ms
Operating medium:	5 micron filtered clean dry, non-lubricated compressed air



Description	Ports	Order code
0.5 to 60 seconds (ON delay) normally closed timing	M5	52.SB20.060
1 to 120 seconds (ON delay) normally closed timing	M5	52.SB20.120
3 to 180 seconds (ON delay) normally closed timing	M5	52.SB20.180
0.5 to 60 seconds (OFF delay) normally open timing	M5	52.SB21.060
1 to 120 seconds (OFF delay) normally open timing	M5	52.SB21.120
3 to 180 seconds (OFF delay) normally open timing	M5	52.SB21.180

Dimensional drawings

To set the device turn the dial knob to the required time setting. When air is supplied to control port 12 (10) the device will begin to time. On time out air passes from port 1 to 2 (Normally closed versions) or closes after time out (Normally open versions). Reset is achieved upon removal of pressure from control port 12 (10).



Impulse Automation Limited
United Kingdom
Company Registration 665193