

Pneumatic Timer - 52.SN Series

Set and Forget Timer - 1/8 NPT Side Ported

Technical information

Pressure range:	1.5-8 bar, port 1 pressure must not exceed control port pressure at 12 or 10
Temperature range:	-10°C...+60°C (Subject to moisture removal)
Mounting:	Panel mount via M3 holes or base mount
Time setting:	Via front dial knob 270° rotation, infinite throughout respective time range
Repeatability:	+/- 2% of the of the selected time delay
Reset:	Automatic by removal of control port pressure 12 or 10 (see connection type)
Reset time:	< 300 ms
Operating medium:	5 micron filtered clean dry, non-lubricated compressed air

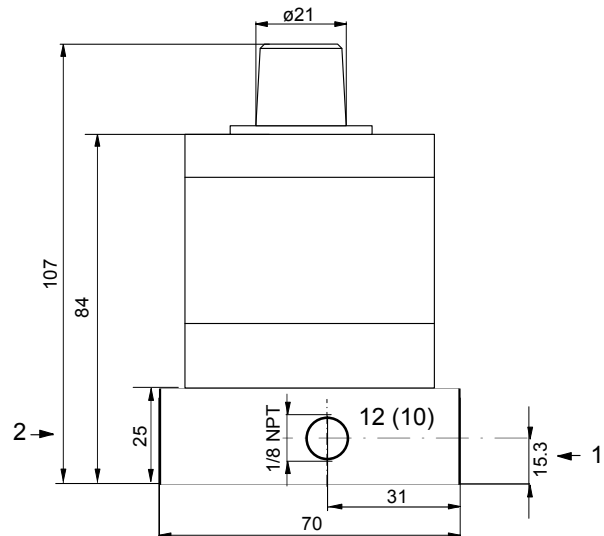
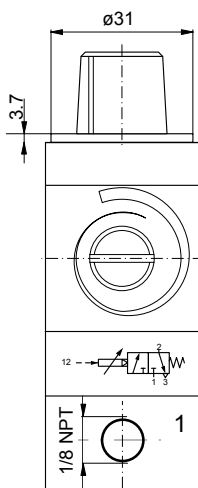
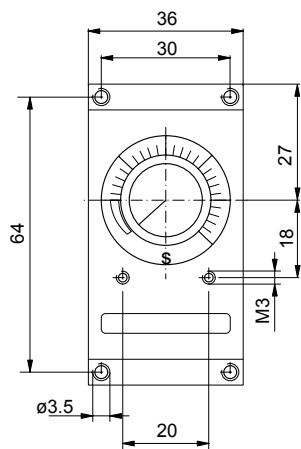
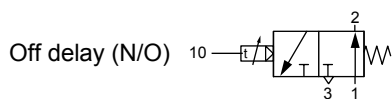
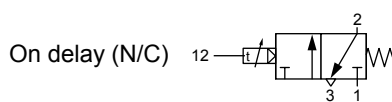


Other information

Minimum order quantities may apply.

Description	Ports	Order code
0.5 to 60 seconds (ON delay) normally closed timing	1/8 NPT	52.SN20.060
1 to 120 seconds (ON delay) normally closed timing	1/8 NPT	52.SN20.120
3 to 180 seconds (ON delay) normally closed timing	1/8 NPT	52.SN20.180
0.5 to 60 seconds (OFF delay) normally open timing	1/8 NPT	52.SN21.060
1 to 120 seconds (OFF delay) normally open timing	1/8 NPT	52.SN21.120

Dimensional drawings



This timer is provided with an M5 plug, there are two types of connection:

Connection type A. (Port 10 or 12 isolated control pressure)

Insert the M5 plug into the internal port (inside port 12 or 10). Use one small drop of Bondloc B542 on the thread of the M5 plug and insert until its flush with the recess, do not fully tighten. Allow the thread sealant to cure for 24 hours before applying pressure.

Connection type B. (Port 1 same supply & control pressure)

Discard the M5 plug, instead insert a 1/8 NPT plug into port 12 or 10, use Bondloc B542 as described above on the thread of the plug and allow to cure before applying pressure.

Impulse Automation Limited
United Kingdom
Company Registration 665193