

# ATEX Pneumatic Timer - Digital Series

## Pneumatic Digital Timer

### Technical information

<b>Pressure range:</b>	2-6 bar
<b>Temperature range:</b>	0°C...+60°C
<b>Medium Temperature:</b>	Maximum 30°C (compressed air temperature)
<b>Mounting:</b>	Panel mount only, cut out 52 x 52mm
<b>Time setting:</b>	Via manual push buttons (Bottom of display)
<b>Mechanical life:</b>	30 x 10 <sup>6</sup>
<b>Display:</b>	4mm digit height, 2 lines of 3 or 5 digits
<b>Protection class:</b>	IP40 when connected, higher protection with covers (front only)
<b>Resolution:</b>	1m or 1s depending on version
<b>Frequency error:</b>	1/min 0.5%; 1/sec 2%
<b>Manual reset:</b>	Front button reset
<b>Pneumatic reset:</b>	Pulse signal to port Y, min pulse length 180ms (1 reset per 2 secs max, pneumatic reset versions only)
<b>Operating medium:</b>	5 micron filtered, dried and non-lubricated compressed air

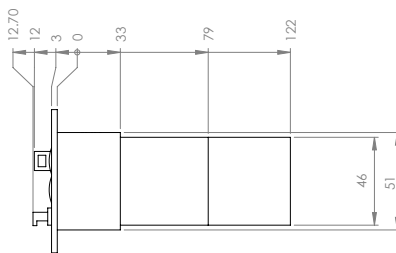
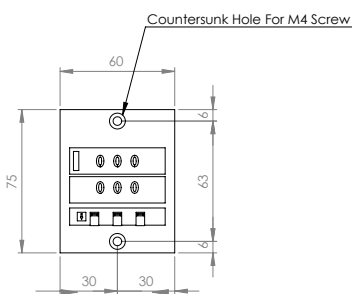


Description	Reset Type	Ports	Order code
3 digit seconds timer	Pneumatic	M5	<b>57.K21.03.00.EX</b>
3 digit minutes timer	Pneumatic	M5	<b>57.K22.03.00.EX</b>
5 digit seconds timer	Pneumatic	M5	<b>57.K52.05.00.EX</b>
5 digit minutes timer	Pneumatic	M5	<b>57.K54.05.00.EX</b>
5 digit seconds timer/output signal duration 300...340 ms (no port Y)	Automatic	M5	<b>57.K65.05.10.EX</b>
5 digit minutes timer/output signal duration 300...340 ms (no port Y)	Automatic	M5	<b>57.K66.05.10.EX</b>

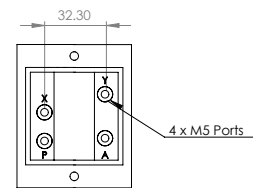
### Dimensional drawings

### EX-CLASSIFICATION

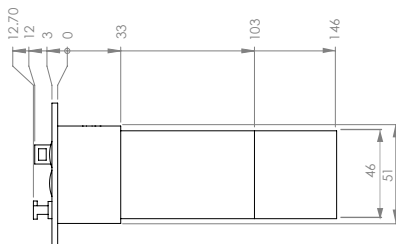
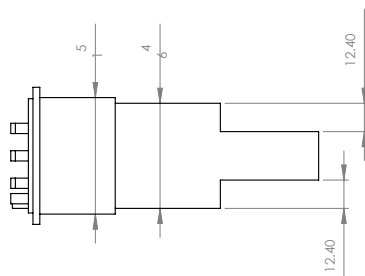
Gas: Ex II 2G Ex h IIB T4 Gb (0°C ≤ Ta ≤ 60°C)  
 Dust: Ex II 2D Ex h IIIB T130°C Db (0°C ≤ Ta ≤ 60°C)  
 Mining: Ex I M2 Ex h I Mb (0°C < Ta < 60°C)



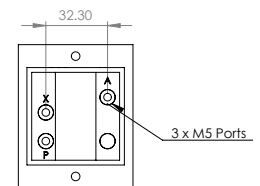
Dimensions & Connection Without Automatic Reset



X = Air intake timing element  
 Y = Pneumatic reset  
 P = Air intake  
 A = Output signal



Dimensions & Connection With Automatic Reset



**Impulse Automation Limited**  
**United Kingdom**  
**Company Registration 665193**