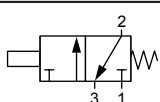


ATEX Pneumatic Proximity Switch

Technical information

Pressure range:	2 - 6 bar
Temperature range:	0°C...+60°C
Medium temperature:	Maximum 30°C (compressed air temperature)
Mounting:	M4 thread or strap retainer
Sensing:	Non-contact sensing, see instructions for actuating distances
Switching frequency:	5Hz
Protection class:	IP40 when connected
Operating medium:	5 micron filtered, clean dry non-lubricated compressed air

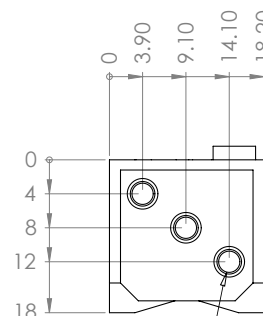
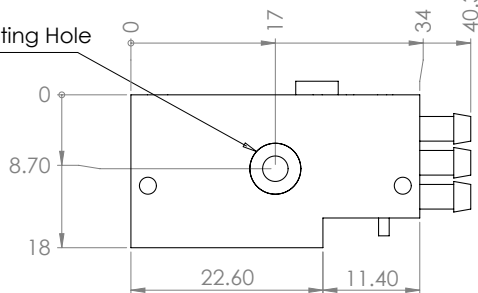
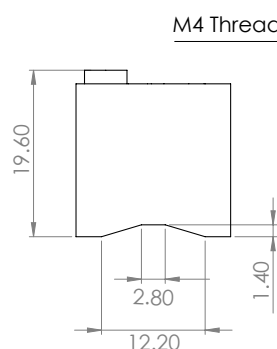
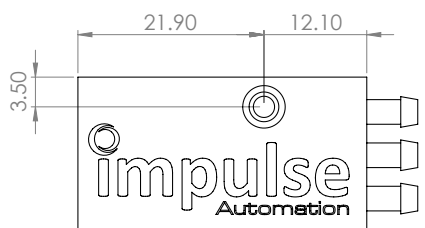
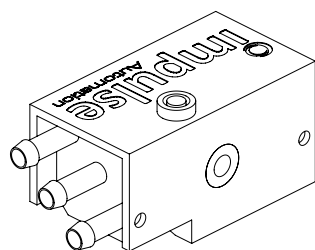


Symbol	Description	Tube connection	Order code
	Pneumatic proximity switch 3/2 way normally closed barbed connection	5mm od x 3mm id	57.21.326.EX

Dimensional drawings

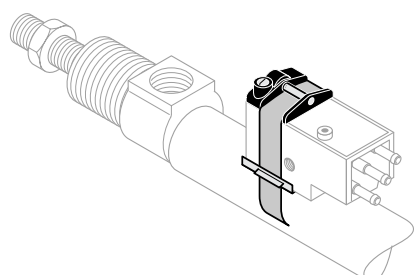
EX-CLASSIFICATION

Gas: Ex II 2G Ex h IIC T4 Gb (0°C ≤ Ta ≤ 60°C)
Dust: Ex II 2D Ex h IIIC T80°C Db (0°C ≤ Ta ≤ 60°C)
Mining: Ex I M2 Ex h I Mb (0°C < Ta < 60°C)



Active Surface Marked By White Dot

3 x Nipple Connections For 5x1 Tube



Accessories

Mounting strap for cylinder diameter 8mm - 100mm Order code: 33.006

Impulse Automation Limited
United Kingdom
Company Registration 665193