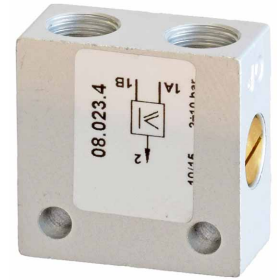


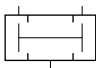
Logic Valves & Flow Control

Pneumatic AND Logic Valve

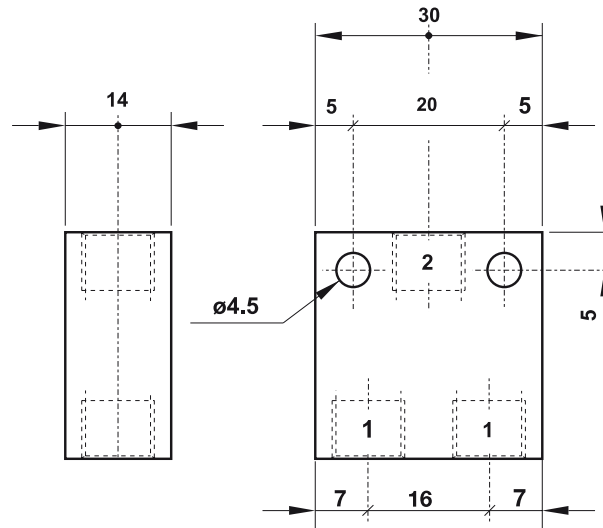
Technical information

Pressure range: 2 - 10 bar
Temperature range: -10°C...+60°C
Materials: Anodised aluminium
Seals: NBR
Operating medium: 5 micron filtered, lubricated or non-lubricated compressed air.



Symbol	Description	Ports	Order code
	AND logic valve	G1/8	VAND08

Dimensional drawings



Impulse Automation Limited
United Kingdom
Company Registration 665193