

# Logic Valves & Flow Control

## Pneumatic Quick Exhaust Valve

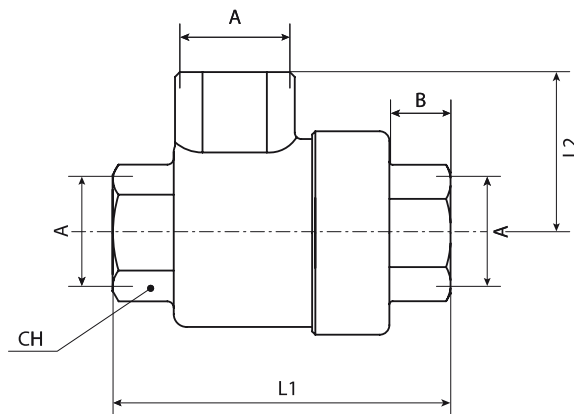
### Technical information

**Pressure range:** 0.3 - 10 bar  
**Temperature range:** -18°C...+70°C  
**Operating medium:** 5 micron filtered, lubricated or non-lubricated compressed air.



Description	Ports	Order code
Quick exhaust valve	G1/8	<b>VSR08</b>
Quick exhaust valve	G1/4	<b>VSR04</b>
Quick exhaust valve	G1/2	<b>VSR02</b>

### Dimensional drawings



A	B	L1	L2	CH
1/8	8.5	42	19.5	15
1/4	11	54	25	19
1/2	15	72	32	26

**Impulse Automation Limited**  
**United Kingdom**  
**Company Registration 665193**