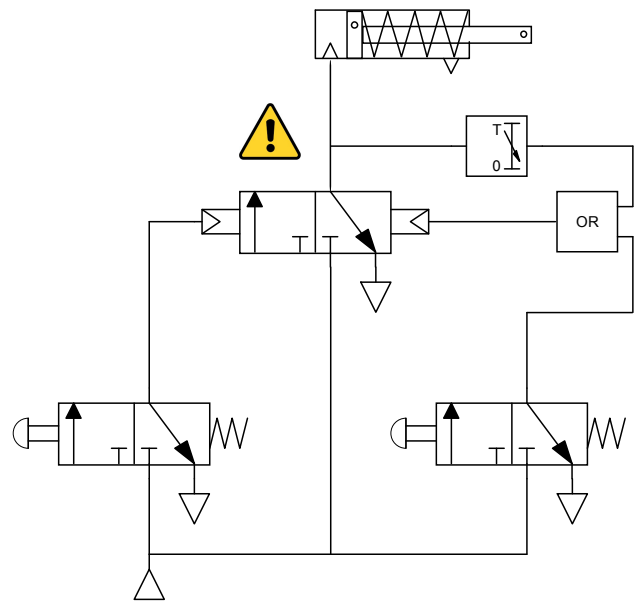
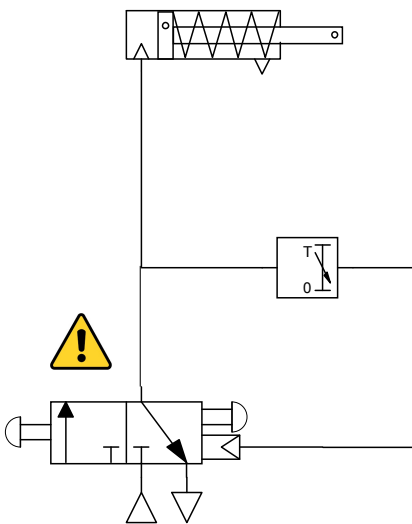


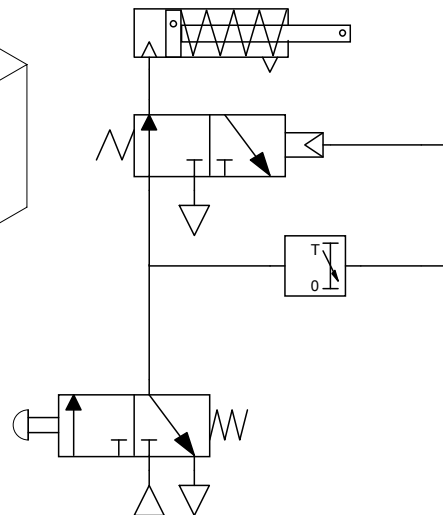
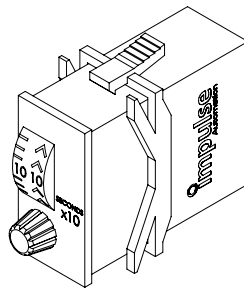
Circuit 1
Unattended - Timed automatic stop with manual stop and reset. Single button system.



Circuit 2
Unattended - Timed automatic stop with manual stop. Dual button system.



Circuit 4
Unattended - Timed automatic stop with manual stop. Single button system.



Circuit 3
Attended - Timed maximum automatic stop. Single button system.

CAUTION:




Upon applying air system may start automatically.
Minimum time required for filling reservoir.

NOTES:

Clean dry non-lubricated air to be used.
Timers should never be adjusted while in operation.
Pressures should not exceed timer specification.

These circuits have been designed as a concept/theory only. It is your responsibility to ensure that these details comply will all safety standards and regulations. We cannot accept responsibility for its application. Pneumatic cylinders have been used to illustrate output functionality only. Schematic diagrams shown here may vary from actual parts supplied, although functionality will remain the same.

Impulse Automation Limited	Date: 13th May 2014 Document: DWG006	REVISION	3
Title: Single Shot Pneumatic Timing Circuits		Author: Robert Dunn	
			
www.impulseautomation.co.uk sales@impulseautomation.co.uk			