

# Cleanline Cylinder - Special Nose Design

## Double Acting Ø 32mm - 100mm

### Technical information

<b>Operating pressure:</b>	Max. 10 bar
<b>Temperature range:</b>	-20°C...+80°C (Dry air for below 0°C)
<b>Housing/end caps:</b>	Aluminium alloy
<b>Removable nose &amp; seals:</b>	316L stainless steel/replaceable PU wiper seal
<b>Rod:</b>	C45 chromium plated steel (Optional AISI 304 stainless steel)
<b>Other seals:</b>	NBR/polyurethane
<b>Screws:</b>	Stainless steel AISI 304 with front screw head covers
<b>Lubricant:</b>	Not required
<b>Operating medium:</b>	5 micron filtered, lubricated or non-lubricated compressed air



Replaceable Wiper Seal

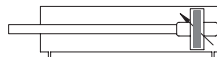
### Other information:

Sensors are available for this product, see data sheets TX1004/TX1005.  
 Mountings are available for this product, see data sheets M8400/M8401/M8402/M8403.  
 Contact us for spare cylinder seal kits and replacement PU wiper seals.

Ø	B <sup>e11</sup>	E	G	L2	L8+	L3	L12	EE	KK	ØMM	AM	BG	KV	KW	PL	RT	SW	TG	VA	WH	ZJ+
32	30	45	30	20	94	5	6	G1/8	M10X1.25	12	22	16	17	6	13	M6	10	32.5	3	26	120
40	35	54	28	23	105	5	6	G1/4	M12X1.25	16	24	16	19	7	15	M6	13	38	3	30	135
50	40	64	30	27	106	5	8	G1/4	M16X1.5	20	32	16	24	8	15	M8	17	46.5	4	37	143
63	45	75	37	29	121	5	8	G3/8	M16X1.5	20	32	16	24	8	19	M8	17	56.5	4	37	158
80	45	93	37.5	33	128	5	10	G3/8	M20X1.5	25	40	17	30	9	20.5	M10	22	72	4	46	174
100	55	110	40	36	138	5	10	G1/2	M20X1.5	25	40	17	30	9	22	M10	22	89	4	51	189

### Dimensional drawings & ordering information

<b>To order:</b>	<b>21.11A.GMXXXX</b>	32mm bore + stroke
	<b>21.21A.GMXXXX</b>	40mm bore + stroke
	<b>21.31A.GMXXXX</b>	50mm bore + stroke
	<b>21.41A.GMXXXX</b>	63mm bore + stroke
	<b>21.51A.GMXXXX</b>	80mm bore + stroke
	<b>21.61A.GMXXXX</b>	100mm bore + stroke

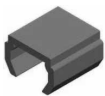


#### Length of cushioning:

Ø 32	20mm
Ø 40	22mm
Ø 50	26mm
Ø 63	30mm
Ø 80	32mm
Ø 100	34mm

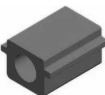
The unique nose design includes a durable wiper seal that resists the ingress of dirt or aggressive medium that would otherwise penetrate the cylinder, a common problem for pneumatic cylinders which causes the deterioration of the device and ultimately reduces life expectancy. The nose can easily be removed, the PU wiper seal effortlessly replaced, resulting in easy maintenance for continued operation.

Stainless steel piston rods are also available, for example: 21.X2A.GMXXXX



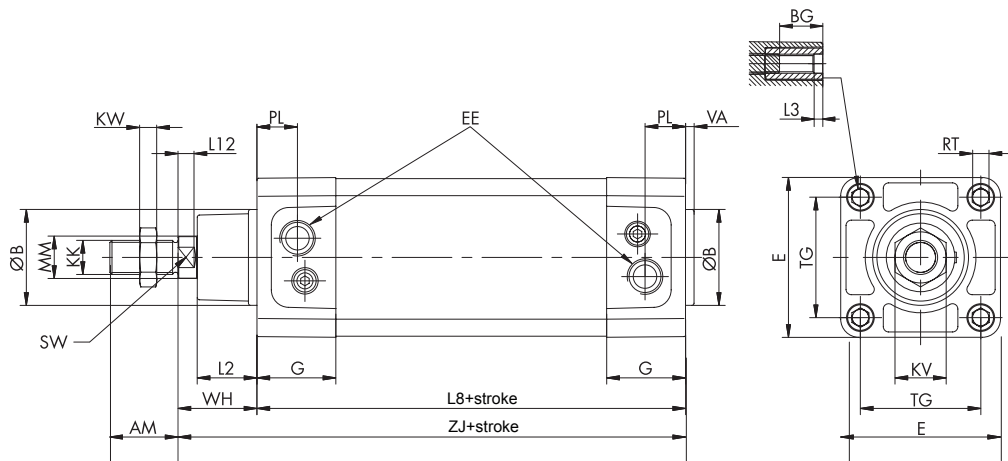
Groove cover for use with sensors, 2000mm length.

Order code: **20.001**



Standard groove cover, specify length required.

Order code: **20.002**



**Impulse Automation Limited**  
 United Kingdom  
 Company Registration 665193