

Miniature Solenoid Valves

Kuhnke 64 Series Valve - 2/2 Way N/C Standard Base

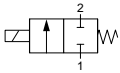
Technical information

Temperature range:	-10°C...+50°C
Valve type:	Poppet
Duty cycle:	Continuous 100%
Housing:	Brass body, encapsulated coils
Seals:	NBR
Lubricant:	Not required.
Earthing contact:	Part of the standard device.
Operating medium:	5 micron filtered, lubricated or non-lubricated compressed air.

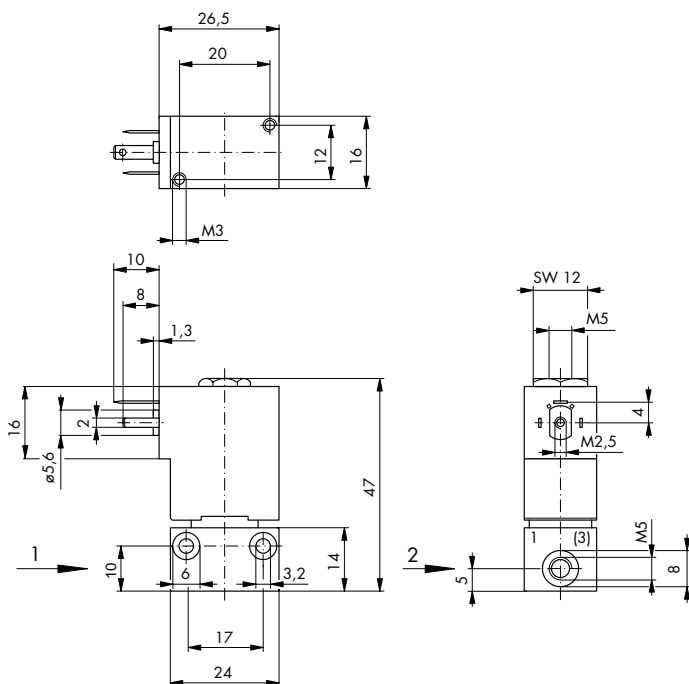


Other information

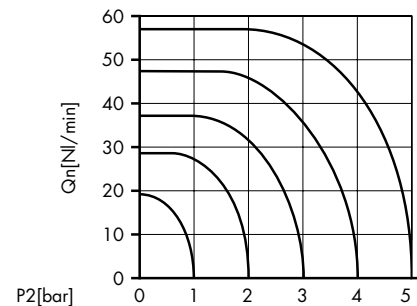
Insert coil voltage required to complete the order code, example 64.025.24VDC.
 Standard voltages are 12 and 24 VDC; 24, 110 and 230 VAC. Preferred types** in 24VDC. For non-preferred versions, minimum order quantities may apply.
 Order connecting plugs separately, part number 64.230.01.

Symbol	Description	Max. Pressure	Coil Power	Orifice	Ports	Order code
	2/2 way spring return normally closed DC coil	8 bar	DC 4.6 W	1mm	M5	64.025**
	2/2 way spring return normally closed AC coil	8 bar	AC 5.5 VA	1mm	M5	64.024
	2/2 way spring return normally closed DC coil	5 bar	DC 4.6 W	1.5mm	M5	64.073
	2/2 way spring return normally closed AC coil	5 bar	AC 5.5 VA	1.5mm	M5	64.072

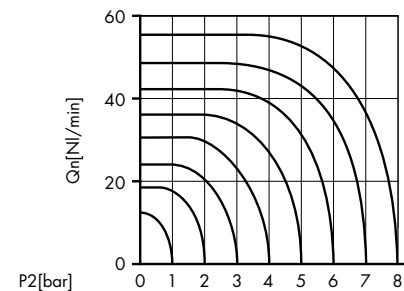
Dimensional drawings



kv=0,70 l/min (NW 1,5)



kv=0,45 l/min (NW 1)



Impulse Automation Limited
United Kingdom
Company Registration 665193