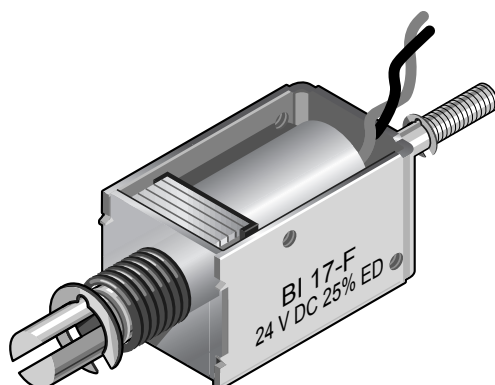


BI17 Series Bistable Linear Solenoid Push & Pull Type

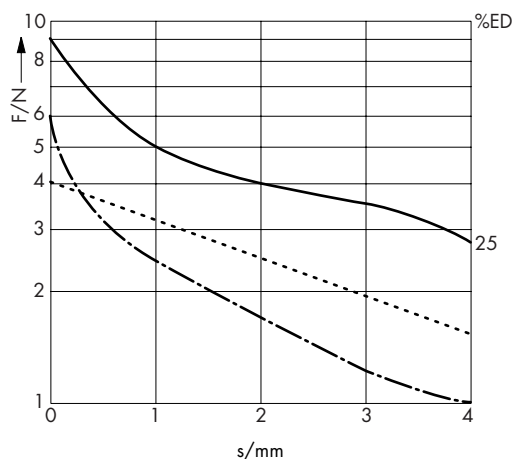
BI	17	- F -	24 V DC	25 % ED	Order specifications
BI					Linear solenoid
	17				Design type
					Coil terminals
		F			Flying leads (10 cm standard length)
			24		Nominal voltage (standard voltage) ¹⁾
				25 % ED	Perm. duty cycle under air cooled conditions (LK)

¹⁾ Other voltages are available on request up to 60 V DC



Weight:
Complete solenoid: appr. 46 g
Armature: appr. 12 g
Standard:
Voltage: 24 V DC
Flying leads: 10 cm
Insulation class: E (max. permissible temperature = 120 °C)

	25	%	Perm. duty cycle (ED)
	9,5	W	Nominal coil power P_N
	22	ms	Actuation time (ED)
	11	ms	Drop-out time



Force vs. Stroke diagram $F = f(s)$

..... spring force
— · — · — permanent force

Force measured when operating in horizontal position, at 90 % rated voltage and with winding at operating temperature

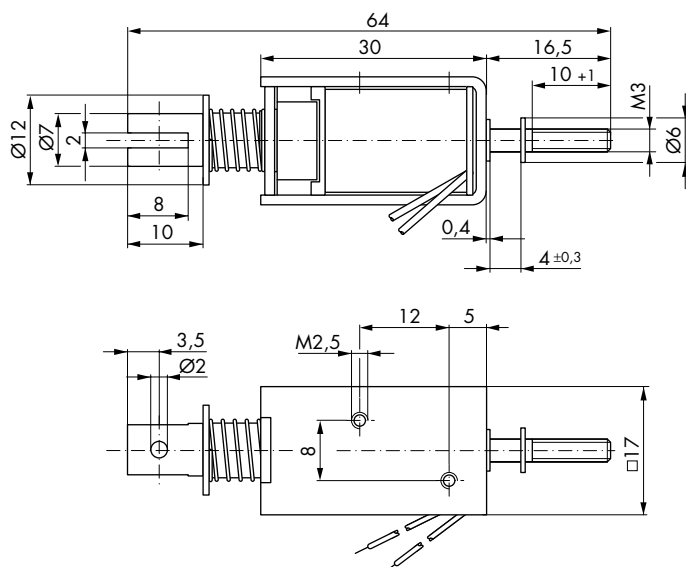
stroke $s = 0$ corresponds to armature in fully home position

Force vs. stroke characteristics measured without return spring

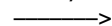
Impulse Automation Limited
United Kingdom
Company Registration 665193

Information shown in these data sheets are for guidance purposes only, no liability is accepted for any errors or omissions. The designer or user is solely responsible for the safe and proper use of these parts, assemblies or equipment described.

BI17 Series Bistable Linear Solenoid Push & Pull Type



Dimensions given with armature
in fully home position



Direction of stroke