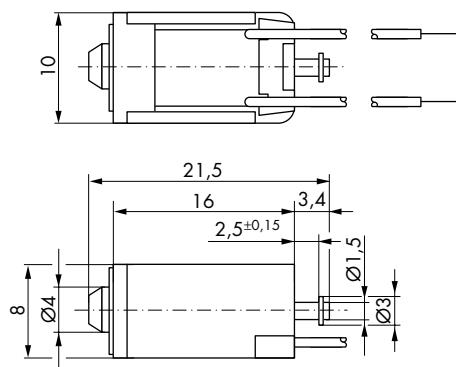


## BI8 Series Bistable Linear Solenoid Push Type

BI	8	- F -	24 V DC	15 % ED	Order specifications
BI					Linear solenoid
	8				Design type
					Coil terminals
		F			Flying leads (10 cm standard length)
		L			Soldering pins (grid dimensions)
			24		Nominal voltage (standard voltage) <sup>1)</sup>
				15 % ED	Perm. duty cycle under air cooled conditions (LK)

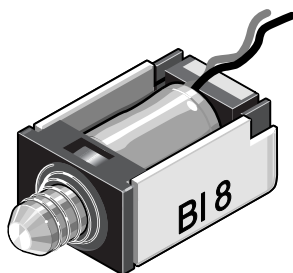
<sup>1)</sup> Other voltages are available on request up to 30 V DC



Dimensions given with armature in fully home position

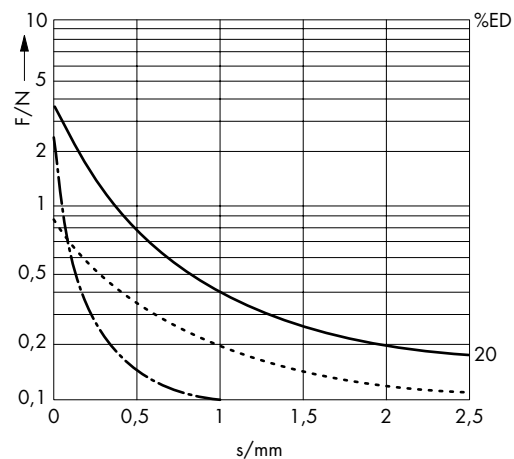


Direction of stroke



Weight:  
Complete solenoid: appr. 6 g  
Armature: appr. 1.6 g  
Standard:  
Voltage: 24 V DC  
Flying leads: 10 cm  
Insulation class: E (max. permissible temperature = 120 °C)

	15	% Perm. duty cycle (ED)
	7,2	W Nominal coil power $P_n$
	12	ms Actuation time (ED)
	7	ms Drop-out time



Force vs. Stroke diagram  $F = f(s)$

..... spring force  
— · — · — permanent force

Force measured when operating in horizontal position, at 90 % rated voltage and with winding at operating temperature

stroke  $s = 0$  corresponds to armature in fully home position

Force vs. stroke characteristics measured without return spring

**Impulse Automation Limited**  
**United Kingdom**  
**Company Registration 665193**

Information shown in these data sheets are for guidance purposes only, no liability is accepted for any errors or omissions. The designer or user is solely responsible for the safe and proper use of these parts, assemblies or equipment described.