

Kuhnke Pneumatic Brass Cylinder

Double Acting Cylinder (Type S) Ø 12mm - 16mm

Technical information

Operating pressure: 1-10 bar
Temperature range: -10°C...+70°C
Housing/end caps: Brass
Rod: Cr-Ni steel
Seals: NBR
Lubricant: Shell Tellus C10
Operating medium: 5 micron filtered, lubricated or non-lubricated compressed air.



Other information:

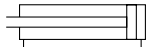


For ATEX certification use code "X" for example 37.X.250.XXX
Mountings are available for this product, see data sheet M7200

Ø	A	B	C	D	E	F	G	ØH	ØI	J	K	L	M	SW	V	Max stroke available
12	11	M10	14.5	M5	12	17	M5	18	16	-	-	54.5	10	-	5	300 mm
16	11	M18x1.5	15	M6	12	24	M5	22	20	-	-	54	6	-	6	350 mm

Dimensional drawings

To order:



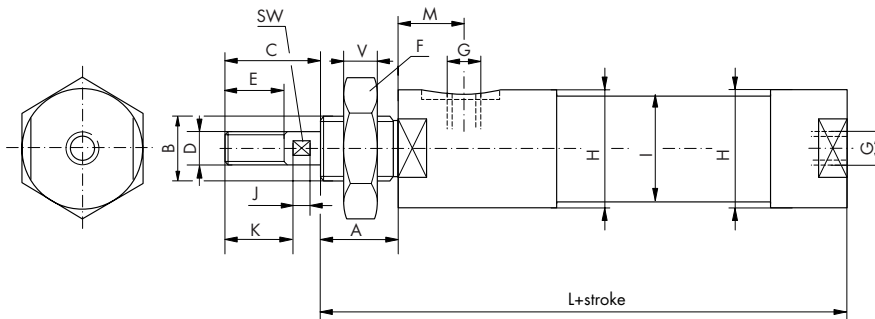
37.250.XXX 12mm bore + stroke
36.250.XXX 16mm bore + stroke

Example **37.250.050**

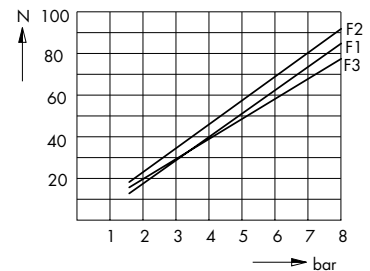
Seal kits

Ø12mm Order code: **37.400.02**
 Ø16mm Order code: **36.400.01**

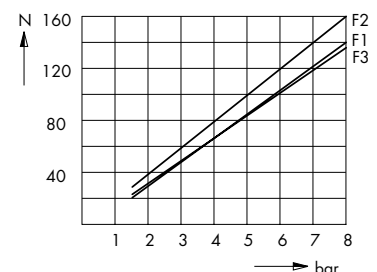
F1 = single acting cylinders
 F2 = double acting cylinders in forward stroke
 F3 = double acting cylinders in return stroke



Ø 12 mm



Ø 16 mm



Impulse Automation Limited
United Kingdom
Company Registration 665193