

# Kuhnke Pneumatic Brass Cylinder

## Double Acting Cylinder (Type S) Ø 20mm - 25mm

### Technical information

**Operating pressure:** 0.5-10 bar  
**Temperature Range:** -10°C...+70°C  
**Housing/end caps:** Brass  
**Rod:** Cr-Ni steel  
**Seals:** NBR  
**Lubricant:** Shell Tellus C10  
**Operating Medium:** 5 micron filtered, lubricated or non-lubricated compressed air.



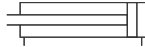
### Other information:

This product is CE marked and is suitable for use in hazardous areas. For further information on the applicable standards for this product, see data sheet M7200.

Ø	A	B	C	D	E	F	G	ØH	ØI	J	K	L	M	SW	V	Max stroke available
20	15	M22x1.5	21.5	M8	12	30	G1/8	27	24	4	12.5	68.5	9	7	6	500 mm
25	15	M24x1.5	25	M10	15	32	G1/8	32	29	4	16	68.5	9	9	6	500 mm

### Dimensional drawings

To order:



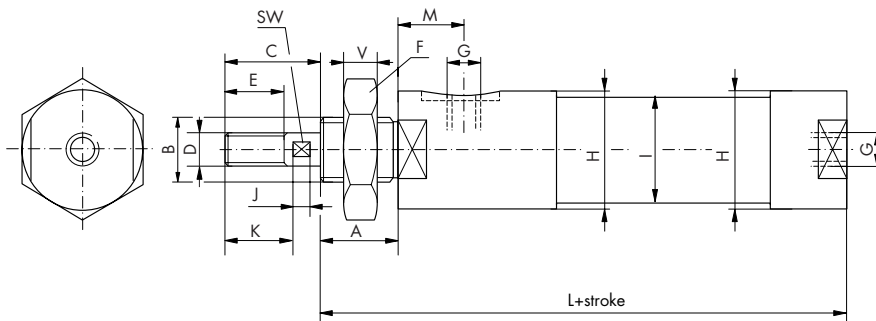
**35.250.XXX** 20mm bore + stroke  
**34.250.XXX** 25mm bore + stroke

Example **34.250.050**

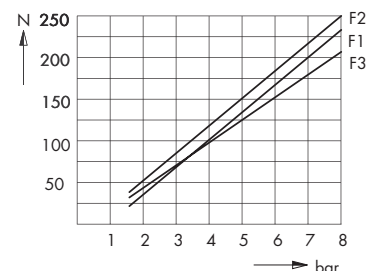
### Seal kits

Ø20mm Order code: **35.400.01**  
 Ø25mm Order code: **34.400.01**

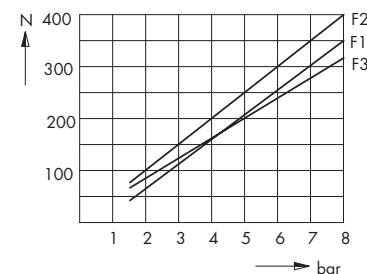
F1 = single acting cylinders  
 F2 = double acting cylinders in forward stroke  
 F3 = double acting cylinders in return stroke



Ø 20 mm



Ø 25 mm



Impulse Automation Limited  
 United Kingdom  
 Company Registration 665193