

Kuhnke Pneumatic Brass Cylinder

Double Acting Cylinder (Type U) Ø 20mm - 25mm

Technical information

Operating pressure: 0.5-10 bar
Temperature Range: -10°C...+70°C
Housing/end caps: Brass
Rod: Cr-Ni steel
Seals: NBR
Lubricant: Shell Tellus C10
Operating Medium: 5 micron filtered, lubricated or non-lubricated compressed air.



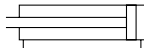
Other information:

Ex For ATEX certification use code "X" for example 35.X.290.XXX
 Mountings are available for this product, see data sheet M7200

Ø	A	B	C	D	E	F	G	ØH	ØI	J	K	L	M	N	O	P	Q	R	S	SW	T	U	V	Max stroke available
20	15	M22x1.5	21.5	M8	12	30	G1/8	27	24	4	12.5	91.5	9	8.5	16	8	8	M22x1.5	13.8	7	-	-	6	500 mm
25	15	M24x1.5	25	M10	15	32	G1/8	32	29	4	16	91.5	9	8.5	16	8	8	M24x1.5	13.8	9	-	-	6	500 mm

Dimensional drawings

To order:



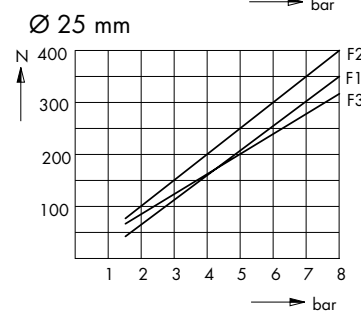
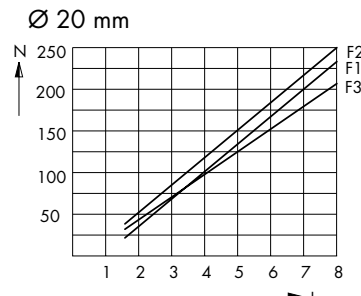
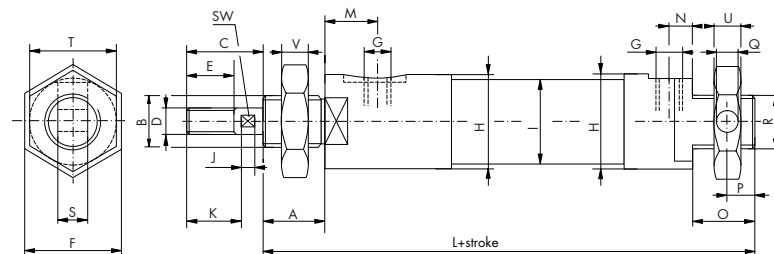
35.290.XXX 20mm bore + stroke
34.290.XXX 25mm bore + stroke

Example **34.290.050**

Seal kits

Ø20mm Order code: **35.400.01**
 Ø25mm Order code: **34.400.01**

F1 = single acting cylinders
 F2 = double acting cylinders in forward stroke
 F3 = double acting cylinders in return stroke



Impulse Automation Limited
United Kingdom
Company Registration 665193