

Kuhnke Pneumatic Brass Cylinder


Single Acting Cylinder (Type S) Ø 12mm - 16mm

Technical information

Operating pressure: 1.5-10 bar
Temperature range: -10°C...+70°C
Housing/end caps: Brass
Rod: Cr-Ni steel
Seals: NBR
Lubricant: Shell Tellus C10
Operating medium: 5 micron filtered, lubricated or non-lubricated compressed air.



Other information:

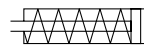
 For ATEX certification use code "X" for example 37.X.150.XXX
 Mountings are available for this product, see data sheet M7200

Ø	A	B	C	D	E	F	G	ØH	ØI	J	K	SW	V	Max stroke available
12	11	M10	14.5	M5	12	17	M5	18	16	-	-	-	5	62.5 mm
16	11	M18x1.5	15	M6	12	24	M5	22	20	-	-	-	6	80 mm

Standard strokes available

Ø	12	12	12	12	12	16	16	16	16
Stroke (mm)	12.5	25	37.5	50	62.5	20	40	60	80
L	62.5	86	109.5	133	156.5	74.5	111.5	148.5	185.5

To order:



37.150.XXX 12mm bore + standard stroke
36.150.XXX 16mm bore + standard stroke

Use code 012 for 12.5mm stroke/037 for 37.5mm stroke & 062 for 62.5mm, for example **37.150.062**.

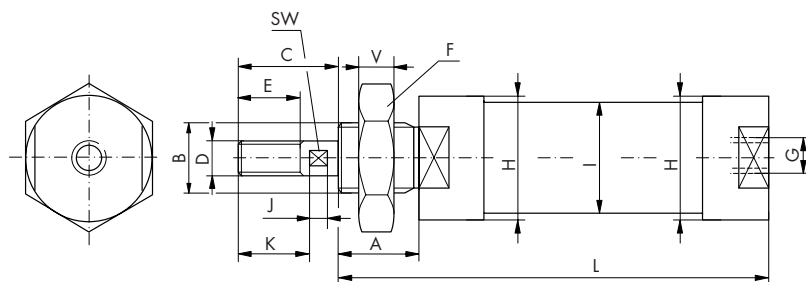
Dimensional drawings

Seal kits

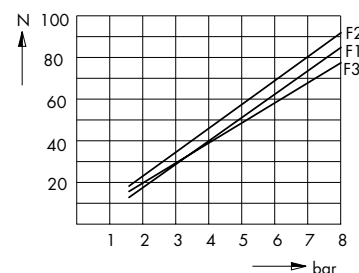
Ø12mm Order code: **37.400.02**
 Ø16mm Order code: **36.400.01**

F1 = single acting cylinders
 F2 = double acting cylinders in forward stroke
 F3 = double acting cylinders in return stroke

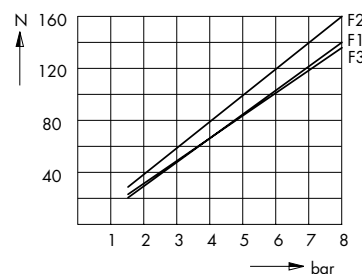
Springs are designed for the return of the piston not the coupled mass.



Ø 12 mm



Ø 16 mm



Impulse Automation Limited
United Kingdom
Company Registration 665193