

# Kuhnke Pneumatic Brass Cylinder


## Single Acting Cylinder (Type S) Ø 20mm - 25mm

### Technical information

**Operating pressure:** 1.5-10 bar  
**Temperature range:** -10°C...+70°C  
**Housing/end caps:** Brass  
**Rod:** Cr-Ni steel  
**Seals:** NBR  
**Lubricant:** Shell Tellus C10  
**Operating medium:** 5 micron filtered, lubricated or non-lubricated compressed air.



### Other information:

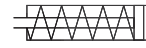
 For ATEX certification use code "X" for example 35.X.150.XXX  
 Mountings are available for this product, see data sheet M7200

Ø	A	B	C	D	E	F	G	Ø H	Ø I	J	K	SW	V	Max stroke available
20	15	M22x1.5	19	M8	12	30	G1/8	27	24	4	12.5	7	6	80 mm
25	15	M24x1.5	22.5	M10	15	32	G1/8	32	29	4	16	7	6	80 mm

### Standard strokes available

Ø	20	20	20	20	25	25	25	25
Stroke (mm)	20	40	60	80	20	40	60	80
L	79	116.5	154	191.5	79	116.5	154	191.5

To order:



**35.150.XXX** 20mm bore + standard stroke  
**34.150.XXX** 25mm bore + standard stroke

Example **34.150.080**

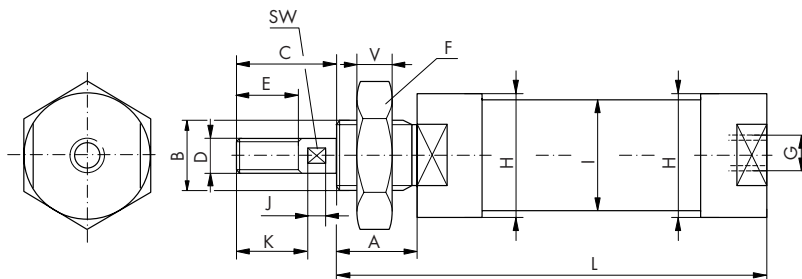
### Dimensional drawings

#### Seal kits

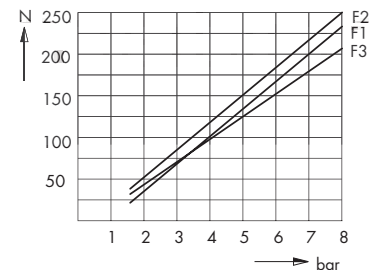
Ø20mm Order code: **35.400.01**  
 Ø25mm Order code: **34.400.01**

F1 = single acting cylinders  
 F2 = double acting cylinders in forward stroke  
 F3 = double acting cylinders in return stroke

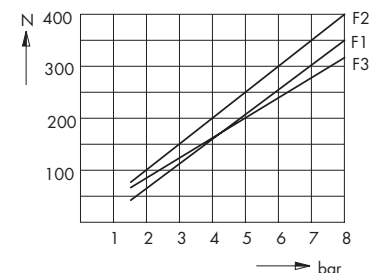
Springs are designed for the return of the piston not the coupled mass.



Ø 20 mm



Ø 25 mm



**Impulse Automation Limited**  
**United Kingdom**  
**Company Registration 665193**