

# Kuhnke Pneumatic Brass Cylinder

## Single Acting Cylinder (Type U) Ø 20mm - 25mm

### Technical information

**Operating pressure:** 1.5-10 bar  
**Temperature range:** -10°C...+70°C  
**Housing/end caps:** Brass  
**Rod:** Cr-Ni steel  
**Seals:** NBR  
**Lubricant:** Shell Tellus C10  
**Operating medium:** 5 micron filtered, lubricated or non-lubricated compressed air.



### Other information:

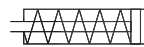


For ATEX certification use code "X" for example 35.X.190.XXX  
Mountings are available for this product, see data sheet M7200

Ø	A	B	C	D	E	F	G	ØH	ØI	J	K	N	O	P	Q	R	S	SW	T	U	V	Max stroke available
20	15	M22x1.5	19	M8	12	30	G1/8	27	24	4	12.5	8.5	16	8	8	M22x1.5	13.8	7	-	-	6	80 mm
25	15	M24x1.5	22.5	M10	15	32	G1/8	32	29	4	16	8.5	16	8	8	M24x1.5	13.8	7	-	-	6	80 mm

### Standard strokes available

Ø	20	20	20	20	25	25	25	25
Stroke (mm)	20	40	60	80	20	40	60	80
L	102	139.5	177	214.5	102	139.5	177	214.5



**35.190.XXX** 20mm bore + standard stroke  
**34.190.XXX** 25mm bore + standard stroke

Example **34.190.080**

### Dimensional drawings

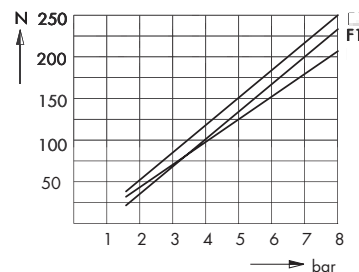
#### Seal kits

Ø20mm Order code: **35.400.01**  
 Ø25mm Order code: **34.400.01**

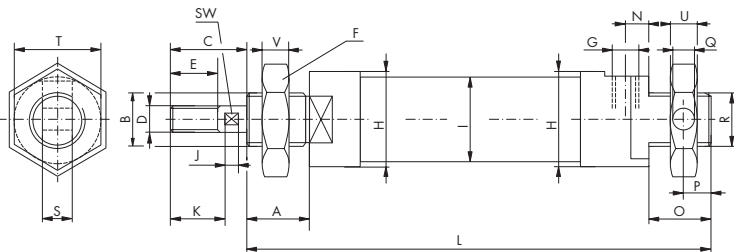
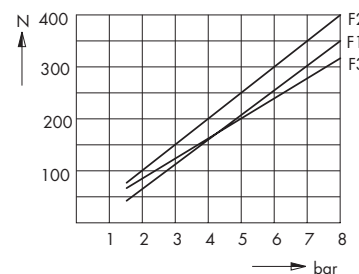
F1 = single acting cylinders  
 F2 double acting cylinders in forward stroke  
 F3 double acting cylinders in return stroke

Springs are designed for the return of the piston not the coupled mass.

Ø 20 mm



Ø 25 mm



**Impulse Automation Limited**  
**United Kingdom**  
**Company Registration 665193**