

Mechanically Operated Pneumatic Valves

2/2 & 3/2 Way Compact Plunger Valve

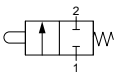
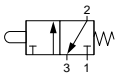
Technical information

Pressure range:	0-10 bar
Temperature range:	-15°C...+50°C
Housing:	Die-cast and lacquered zinc alloy
Seals:	PUR
Lubricant:	Not required
Operating medium:	5 micron filtered, lubricated or non-lubricated compressed air

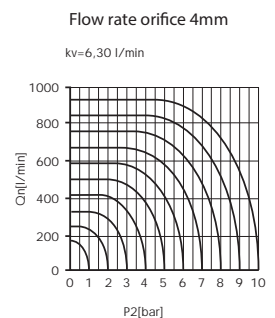
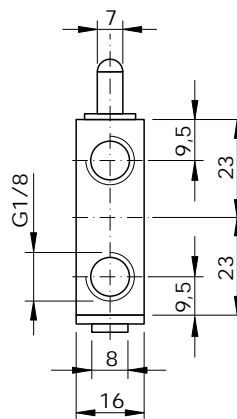
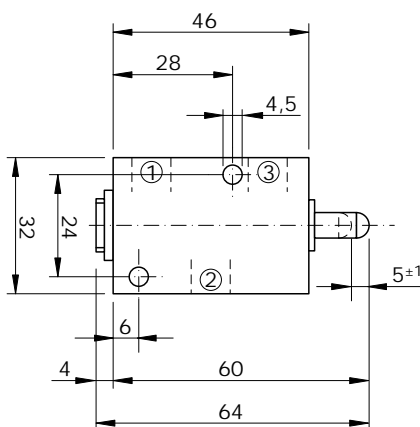


Other information

For NPT ports use prefix code "75" for example 75.XXX.XX.XX

Symbol	Description	Type	Orifice	Ports	Order code
	2/2 way spring return normally closed	Poppet	4mm	G1/8	76.025.21.21
	3/2 way spring return normally closed	Poppet	4mm	G1/8	76.026.21.21

Dimensional drawings



Impulse Automation Limited
United Kingdom
Company Registration 665193