

Air Pilot Operated Pneumatic Valves


5/2 & 5/3 Way Double Pilot Control Valve G1/8 Ports

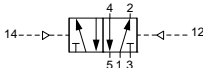
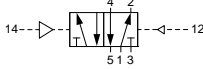
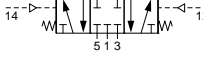
Technical information

Pressure range: 2.5-10 bar
Control pressure: 2.5-10 bar
Temperature range: -15°C...+50°C
Housing: Die-cast and lacquered aluminium alloy
Seals: NBR
Lubricant: Not required
Operating medium: 5 micron filtered, lubricated or non-lubricated compressed air

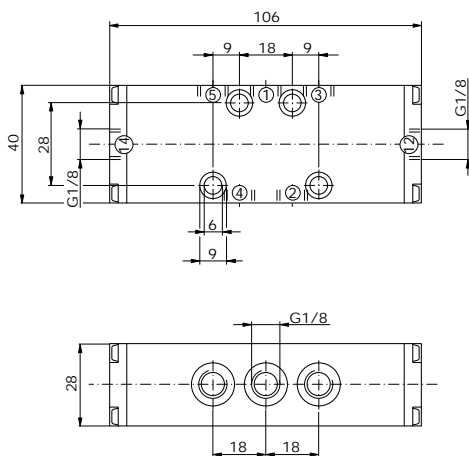


Other information

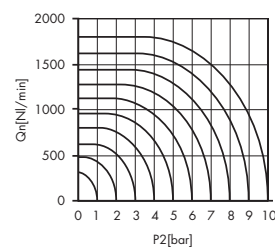
 For ATEX certification use suffix code "EX" for example 76.XXX.XX.XX.EX
 For NPT ports use prefix code "75" for example 75.XXX.XX.XX

Symbol	Description	Type	Orifice	Ports	Order code
	5/2 way double pilot	Poppet	6mm	G1/8	76.027.71.42
	5/2 way double pilot	Spool	6mm	G1/8	76.023.71.42
	5/2 way double pilot with priority	Poppet	6mm	G1/8	76.027.71.47
	5/2 way double pilot with priority	Spool	6mm	G1/8	76.023.71.47
	5/3 way spring return to centre all ports closed	Spool	6mm	G1/8	76.024.71.38
	5/3 way spring return to centre, ports 2 & 4 exhaust	Spool	6mm	G1/8	76.024.71.28

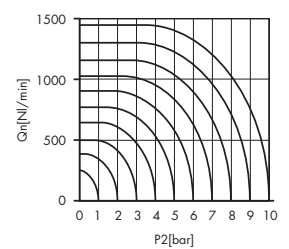
Dimensional drawings



Flow rate orifice 6mm poppet type
 $k_v=12,3 \text{ l/min}$



Flow rate orifice 6mm spool type
 $k_v=9,7 \text{ l/min}$



Impulse Automation Limited
United Kingdom
Company Registration 665193