

Air Pilot Operated Pneumatic Valves

5/2 & 5/3 Way Double Pilot Control Valve G1/4 Ports

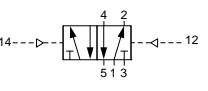
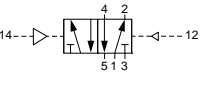
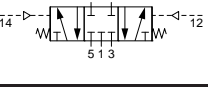
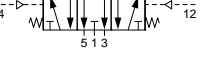
Technical information

Pressure range:	2.5-10 bar
Control pressure:	2.5-10 bar
Temperature range:	-15°C...+50°C
Housing:	Glass fibre reinforced PPA
Seals:	NBR
Lubricant:	Not required
Operating medium:	5 micron filtered, lubricated or non-lubricated compressed air

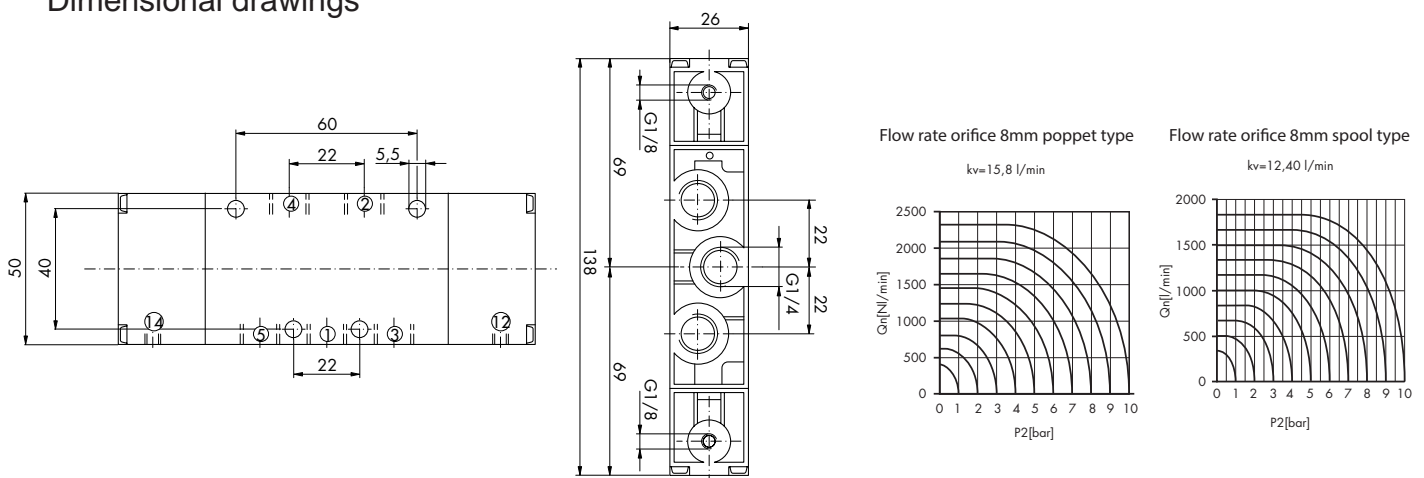


Other information

For NPT ports use prefix code "75" for example 75.XXX.XX.XX

Symbol	Description	Type	Orifice	Pilot Ports	Ports	Order code
	5/2 way double pilot	Poppet	8mm	G1/8	G1/4	76.147.81.42
	5/2 way double pilot	Spool	8mm	G1/8	G1/4	76.143.81.42
	5/2 way double pilot with priority	Poppet	8mm	G1/8	G1/4	76.147.81.47
	5/2 way double pilot with priority	Spool	8mm	G1/8	G1/4	76.143.81.47
	5/3 way spring return to centre all ports closed	Spool	8mm	G1/8	G1/4	76.144.81.38
	5/3 way spring return to centre, ports 2 & 4 exhaust	Spool	8mm	G1/8	G1/4	76.144.81.28

Dimensional drawings



Impulse Automation Limited
United Kingdom
Company Registration 665193