

# Air Pilot Operated Pneumatic Valves


## 5/2 Way Double Pilot Control Valve G1/2 Ports

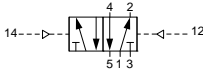
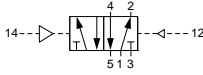
### Technical information

**Pressure range:** 0-10 bar  
**Control pressure:** 2.5-10 bar  
**Temperature range:** -15°C...+50°C  
**Housing:** Lacquered aluminium alloy  
**Seals:** NBR  
**Lubricant:** Not required  
**Operating medium:** 5 micron filtered, lubricated or non-lubricated compressed air

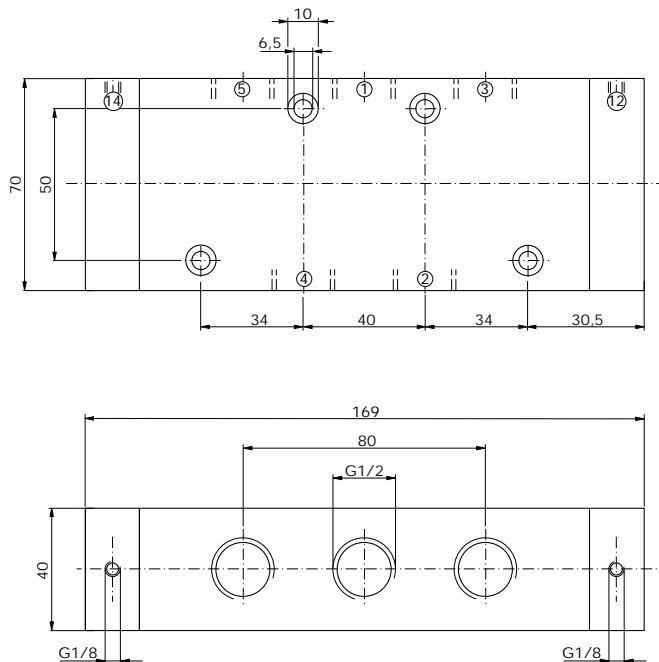


### Other information

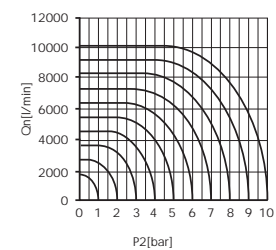
 For ATEX certification use suffix code "EX" for example 76.XXX.XX.XX.EX  
 For NPT ports use prefix code "75" for example 75.XXX.XX.XX

Symbol	Description	Type	Orifice	Pilot Ports	Ports	Order code
	5/2 way double pilot	Poppet	15mm	G1/8	G1/2	<b>76.067.81.42</b>
	5/2 way double pilot with priority	Poppet	15mm	G1/8	G1/2	<b>76.067.81.47</b>

### Dimensional drawings



Flow rate orifice 15mm poppet type  
 kv=68,80 l/min



**Impulse Automation Limited**  
**United Kingdom**  
**Company Registration 665193**