

Solenoid Operated Pneumatic Valves

5/2 & 5/3 Way Double Solenoid Control Valve G1/8 Ports

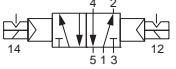
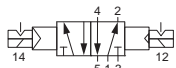
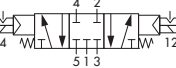
Technical information

Pressure range:	2.5-10 bar
Temperature range:	-15°C...+50°C
Housing:	Plastic material (IXEF)
Seals:	NBR
Lubricant:	Not required
Earthing contact:	Part of the standard device.
Operating medium:	5 micron filtered, lubricated or non-lubricated compressed air.

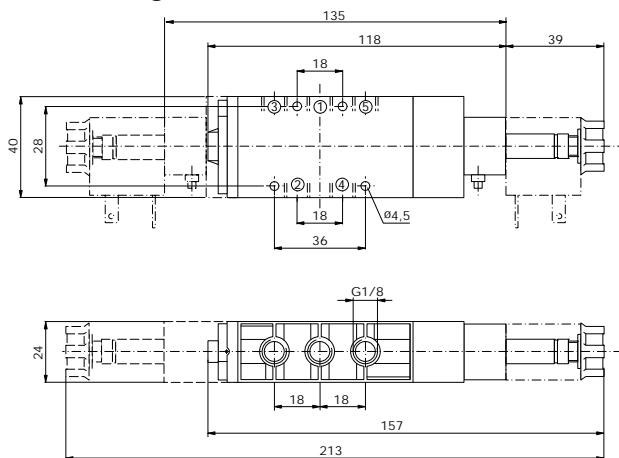


Other information

Subplates are available for this product, see data sheet M1001.
 Order coils & connecting plugs separately, see data sheet M1002.

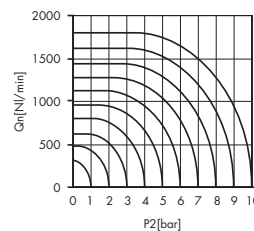
Symbol	Description	Type	Orifice	Ports	Order code
	5/2 way double solenoid	Poppet	6mm	G1/8	76.127.92.00
	5/2 way double solenoid	Spool	6mm	G1/8	76.123.92.00
	5/2 way double solenoid with priority	Poppet	6mm	G1/8	76.127.93.00
	5/2 way double solenoid with priority	Spool	6mm	G1/8	76.123.93.00
	5/3 way spring return to centre all ports closed	Spool	6mm	G1/8	76.124.12.00
	5/3 way spring return to centre, ports 2 & 4 exhaust	Spool	6mm	G1/8	76.124.02.00

Dimensional drawings



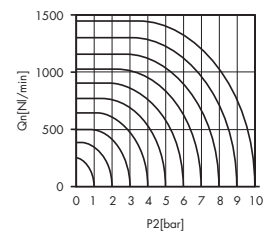
Flow rate orifice 6mm poppet type

kv=12,3 l/min



Flow rate orifice 6mm spool type

kv=9,7 l/min



Impulse Automation Limited
 United Kingdom
 Company Registration 665193