

Solenoid Operated Pneumatic Valves

5/2 & 5/3 Double Solenoid Control Valve G1/4 Ports

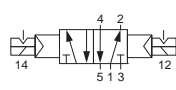
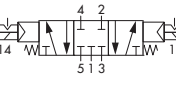
Technical information

| | |
|---------------------------|---|
| Pressure range: | 2.5-10 bar |
| Temperature range: | -15°C...+50°C |
| Housing: | Glass fibre reinforced PPA |
| Seals: | NBR |
| Lubricant: | Not required |
| Earthing contact: | Part of the standard device. |
| Operating medium: | 5 micron filtered, lubricated or non-lubricated compressed air. |

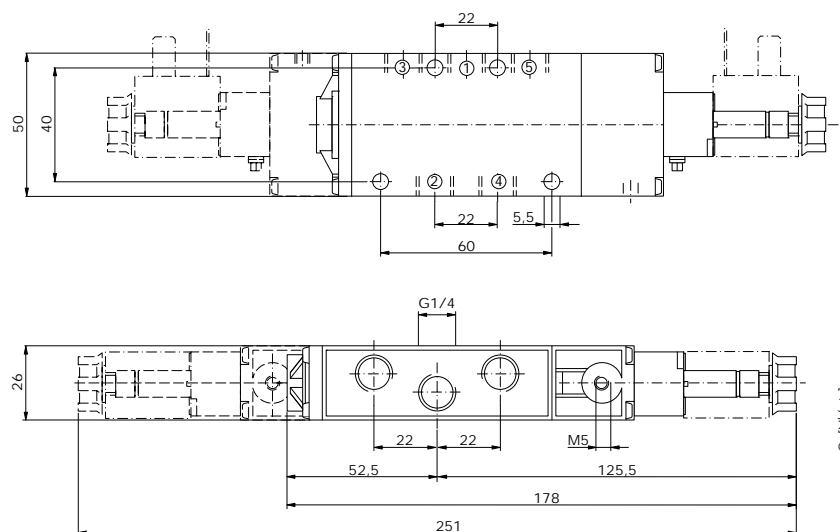


Other information

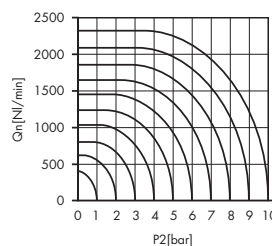
For NPT ports use prefix code "75" for example 75.XXX.XX.XX
 Order coils & connecting plugs separately, see data sheet M1002.

| Symbol | Description | Type | Orifice | Ports | Order code |
|---|--|--------|---------|-------|---------------------|
|  | 5/2 way double solenoid | Poppet | 8mm | G1/4 | 76.147.92.00 |
| | 5/2 way double solenoid | Spool | 8mm | G1/4 | 76.143.92.00 |
|  | 5/3 way spring return to centre all ports closed | Spool | 8mm | G1/4 | 76.144.12.00 |
| | 5/3 way spring return to centre, ports 2 & 4 exhaust | Spool | 8mm | G1/4 | 76.144.02.00 |

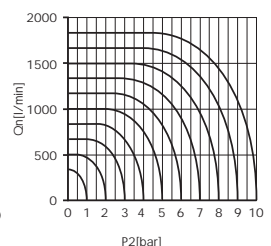
Dimensional drawings



Flow rate orifice 8mm poppet type
 kv=15,8 l/min



Flow rate orifice 8mm spool type
 kv=12,40 l/min



Impulse Automation Limited
 United Kingdom
 Company Registration 665193