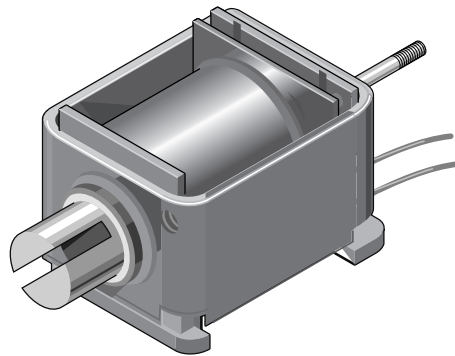


# HL618 Series Linear Solenoid Push & Pull Type

HL	618	- R -	- F -	24 V DC	100 % ED	Order specifications
HL						Linear solenoid
	618					Design type
		R				Return spring
						Coil terminals
			F			Flying leads (10 cm standard length)
			A			Plug connector (6.3 x 0.8 DIN 46247; optional)
				24		Nominal voltage (standard voltage) <sup>1)</sup>
					100 % ED	Perm. duty cycle under air cooled conditions (LK) <sup>2)</sup>

<sup>1)</sup> Other voltages up to max. 220 V DC on request.  
<sup>2)</sup> Other ED than 100 % ED on request.



**Weight:**  
 Complete solenoid: appr. 390 g  
 Armature: appr. 90 g  
**Standard:**  
 Voltage: 24 V DC  
 Flying leads: 10 cm  
 Insulation class: B (max. permissible temperature = 130 °C)

Service-free DU armature bearing for maximum durability.

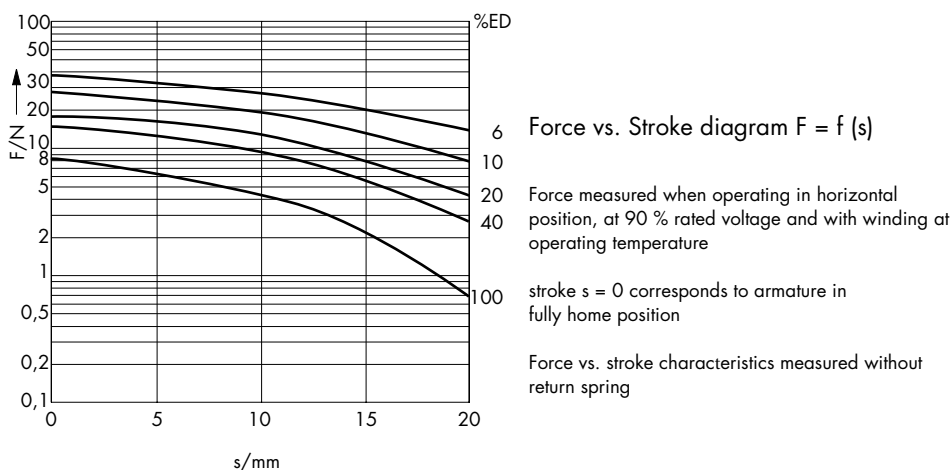
Return spring optional.

Solenoids with order specification HL618-R-... are available with return spring F (0 mm) = 2.2 N and F (20 mm) = 0.9 N.

Observe correct mounting (armature weight).

	100	40	20	10	6	% Perm. duty cycle (ED) <sup>3)</sup>
	12	31	50	96	140	W Nominal coil power P 20

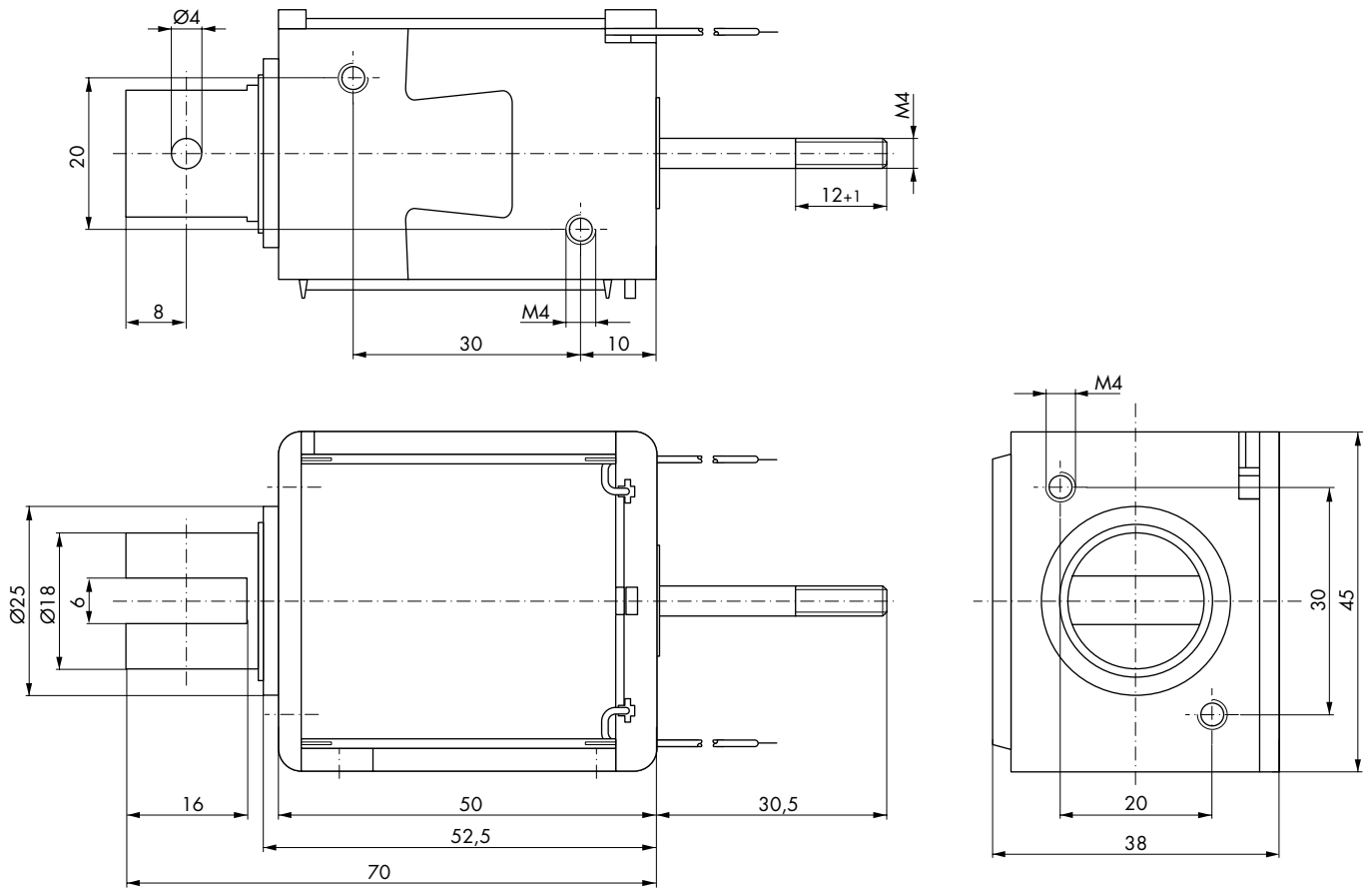
<sup>3)</sup> If solenoid is mounted directly onto a flat metal surface the duty cycle can be extended (please ask for advice)



**Impulse Automation Limited**  
**United Kingdom**  
**Company Registration 665193**

Information shown in these data sheets are for guidance purposes only, no liability is accepted for any errors or omissions. The designer or user is solely responsible for the safe and proper use of these parts, assemblies or equipment described.

# HL618 Series Linear Solenoid Push & Pull Type



Dimensions given with armature in fully home position  
 →  
 Direction of stroke