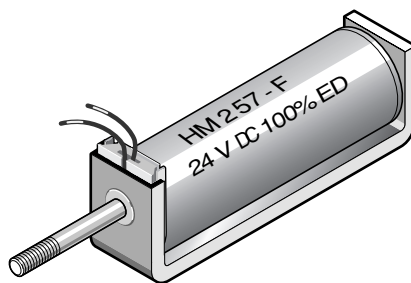


HM2 Series Linear Solenoid Push or Pull Type

HM	2	07	- F -	24 V DC	100 % ED	Order specifications
HM						Linear solenoid
	2					Sizes
						Design type
		07				Pull type solenoid
		57				Thrust type solenoid
						Coil terminals
			F			Flying leads (10 cm standard length)
				24		Nominal voltage (standard voltage) ¹⁾
					100 % ED	Perm. duty cycle under air cooled conditions (LK)

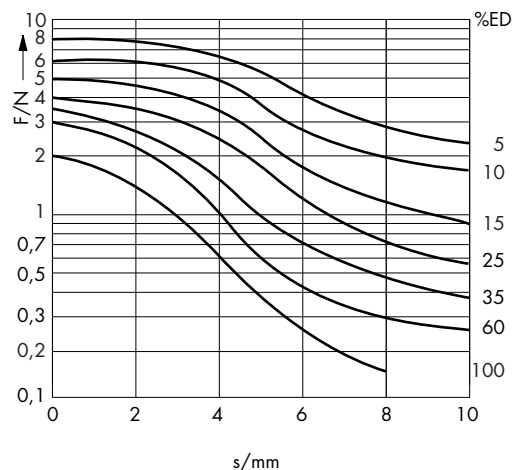
¹⁾ Other DC voltages are available on request.



Weight:
 Complete solenoid: appr. 67 g
 Armature: appr. 15 g
 Standard:
 Voltage: 24 V DC
 Flying leads: 10 cm
 Insulation class: E (max. permissible temperature = 120 °C)

	100	60	35	25	15	10	5	%	Perm. duty cycle (ED) ²⁾
	4,5	7,9	12,5	19	39	45	69	W	Nominal coil power P _n
	29						9	ms	Actuation time (ED) ³⁾

²⁾ If solenoid is mounted directly onto a flat metal surface of at least 45 cm², the duty cycle can be extended up to 1.3 x nominal rating
³⁾ Stroke 5 mm



Force vs. Stroke diagram $F = f(s)$

Force measured when operating in horizontal position, at 90 % rated voltage and with winding at operating temperature

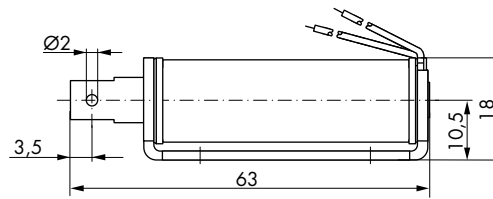
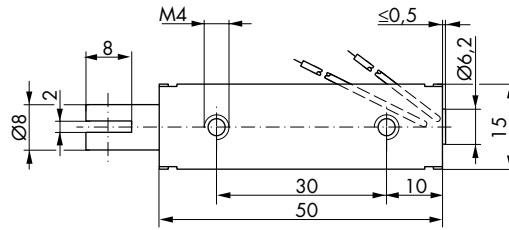
stroke $s = 0$ corresponds to armature in fully home position

Impulse Automation Limited
United Kingdom
Company Registration 665193

Information shown in these data sheets are for guidance purposes only, no liability is accepted for any errors or omissions. The designer or user is solely responsible for the safe and proper use of these parts, assemblies or equipment described.

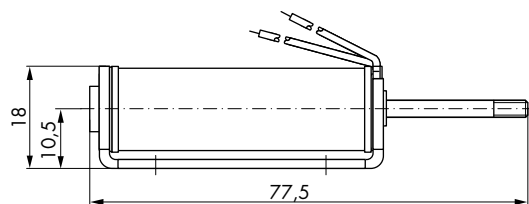
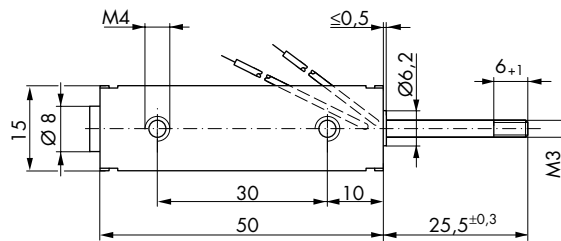
HM2 Series Linear Solenoid Push or Pull Type

Series HM 207 pull type solenoid



Dimensions given with armature in fully home position
 →
 Direction of stroke

Series HM 257 thrust type solenoid



Dimensions given with armature in fully home position
 →
 Direction of stroke

Impulse Automation Limited
United Kingdom
Company Registration 665193

Information shown in these data sheets are for guidance purposes only, no liability is accepted for any errors or omissions. The designer or user is solely responsible for the safe and proper use of these parts, assemblies or equipment described.