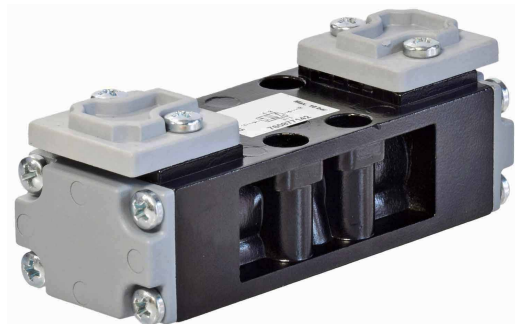


ISO 1 Air Pilot Operated Pneumatic Valves


5/3 Way Double Pilot Control Valve

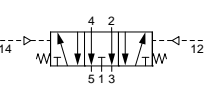
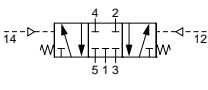
Technical information

Pressure range:	2.5-10 bar
Control pressure:	2.5-10 bar
Temperature range:	-15°C...+50°C
Housing:	Die-cast and lacquered aluminium alloy
Seals:	NBR
Lubricant:	Not required.
Operating medium:	5 micron filtered, lubricated or non-lubricated compressed air.

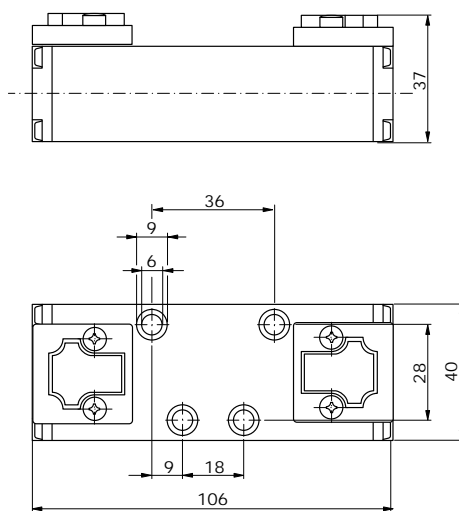


Other information

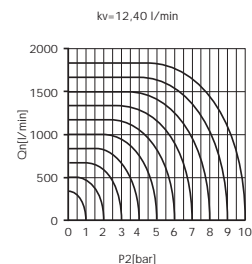
 For ATEX certification use suffix code "EX" for example 76.XXX.XX.XX.EX
Subplates are available for this product, see data sheets M1004 & M1005.

Symbol	Description	Type	Orifice	Order code
	5/3 way spring return to centre, ports 2 & 4 exhaust	Spool	6mm	76.084.71.28
	5/3 way spring return to centre all ports closed	Spool	6mm	76.084.71.38

Dimensional drawings



Flow rate orifice spool type



Impulse Automation Limited
United Kingdom
Company Registration 665193