

# ISO 1 Solenoid Operated Pneumatic Valves

## 5/2 Way Double Solenoid Control Valve

### Technical information

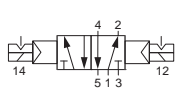
<b>Pressure range:</b>	2.5-10 bar
<b>Temperature range:</b>	-15°C...+50°C
<b>Housing:</b>	Die-cast and lacquered aluminium alloy
<b>Seals:</b>	NBR
<b>Lubricant:</b>	Not required.
<b>Earthing contact:</b>	Part of the standard device.
<b>Operating medium:</b>	5 micron filtered, lubricated or non-lubricated compressed air.



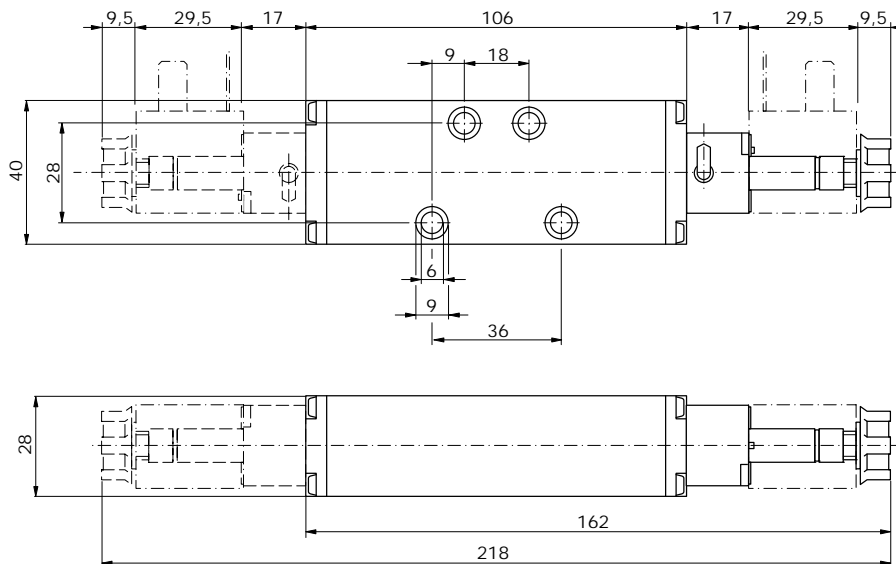
### Other information



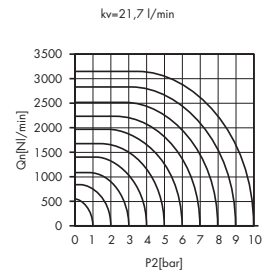
For ATEX certification use suffix code "EX" for example 76.XXX.XX.XX.EX  
 Subplates are available for this product, see data sheets M1004 & M1005.  
 Order coils & connecting plugs separately, see data sheet M1002.

Symbol	Description	Type	Orifice	Order code
	5/2 way double solenoid	Poppet	6mm	<b>76.087.92.00</b>
	5/2 way double solenoid	Spool	6mm	<b>76.083.92.00</b>

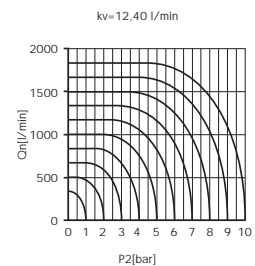
### Dimensional drawings



Flow rate orifice poppet type



Flow rate orifice spool type



**Impulse Automation Limited**  
**United Kingdom**  
**Company Registration 665193**