

Manually Operated Pneumatic Valves


Pneumatic Knob Operated Valve - 3/2 Way

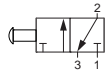
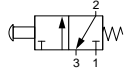
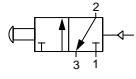
Technical information

Pressure range:	0-10 bar
Temperature range:	-15°C...+50°C
Housing:	Die-cast and lacquered G1/8 zinc alloy or G1/4 aluminium alloy
Seals:	NBR
Lubricant:	Not required
Operating medium:	5 micron filtered, lubricated or non-lubricated compressed air



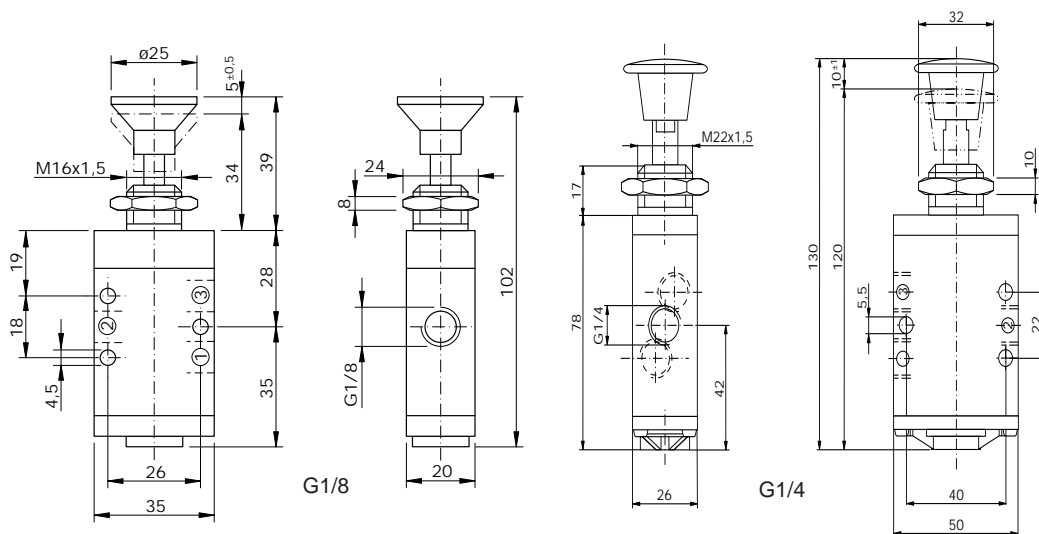
Other information

 For ATEX certification use suffix code "EX" for example 76.XXX.XX.XX.EX
 For NPT ports use prefix code "75" for example 75.XXX.XX.XX

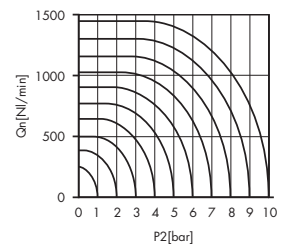
Symbol	Description	Type	Orifice	Ports	Button	Order code
	3/2 way push-pull maintained position	Spool	6mm	G1/8	Black	76.022.27.00
	3/2 way push-pull maintained position	Spool	8mm	G1/4	Black	76.042.27.00
	3/2 way spring return normally closed	Spool	6mm	G1/8	Black	76.022.27.21
	3/2 way spring return normally closed	Spool	8mm	G1/4	Black	76.042.27.21
	3/2 way push-pull maintained position with pilot return **	Spool	6mm	G1/8	Black	76.022.27.22

Dimensional drawings

**Dimensional drawing upon request



Flow rate orifice 6mm
kv=9,7 l/min



Flow rate orifice 8mm
kv=12,40 l/min

