

# Manually Operated Pneumatic Valves

## Pneumatic Lever Valve 3/2 Way Angled Lever G1/8 ports

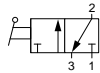
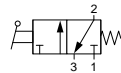
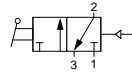
### Technical information

<b>Pressure range:</b>	0-10 bar
<b>Temperature range:</b>	-15°C...+50°C
<b>Housing:</b>	Die-cast and lacquered zinc alloy
<b>Seals:</b>	NBR
<b>Lubricant:</b>	Not required
<b>Operating medium:</b>	5 micron filtered, lubricated or non-lubricated compressed air



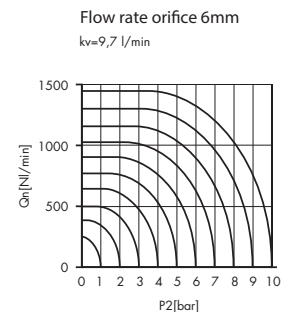
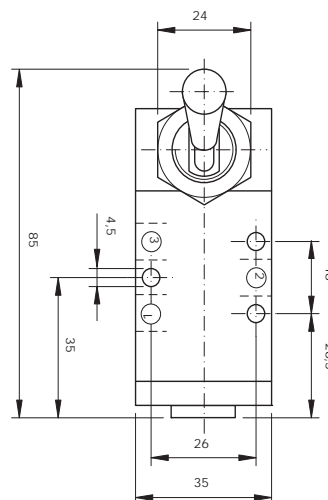
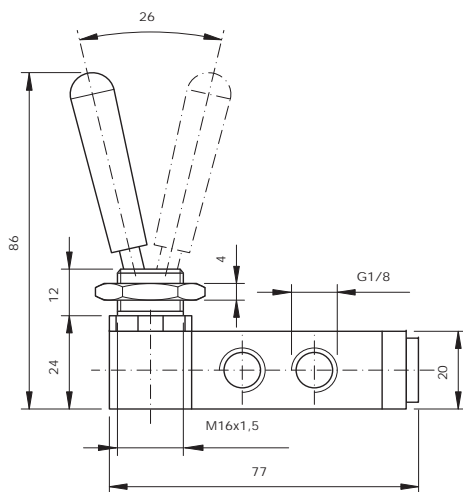
### Other information

**Ex** For ATEX certification use suffix code "EX" for example 76.XXX.XX.XX.EX  
 For NPT ports use prefix code "75" for example 75.XXX.XX.XX  
 Bellows available 76.420.00.54 (5 pcs)

Symbol	Description	Type	Orifice	Ports	Lever	Order code
	3/2 way maintained position	Spool	6mm	G1/8	Black	<b>76.022.25.00</b>
	3/2 way spring return normally closed	Spool	6mm	G1/8	Black	<b>76.022.25.21</b>
	3/2 way maintained position with pilot return **	Spool	6mm	G1/8	Black	<b>76.022.25.22</b>

### Dimensional drawings

\*\*Dimensional drawing upon request



**Impulse Automation Limited**  
**United Kingdom**  
**Company Registration 665193**