

# Manually Operated Pneumatic Valves

## Pneumatic Lever Valve 5/2 Way Angled Lever G1/4 Ports

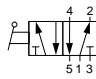
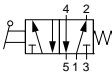
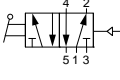
### Technical information

<b>Pressure range:</b>	0-10 bar
<b>Temperature range:</b>	-15°C...+50°C
<b>Housing:</b>	Glass fibre reinforced PPA
<b>Seals:</b>	NBR
<b>Lubricant:</b>	Not required
<b>Operating medium:</b>	5 micron filtered, lubricated or non-lubricated compressed air.



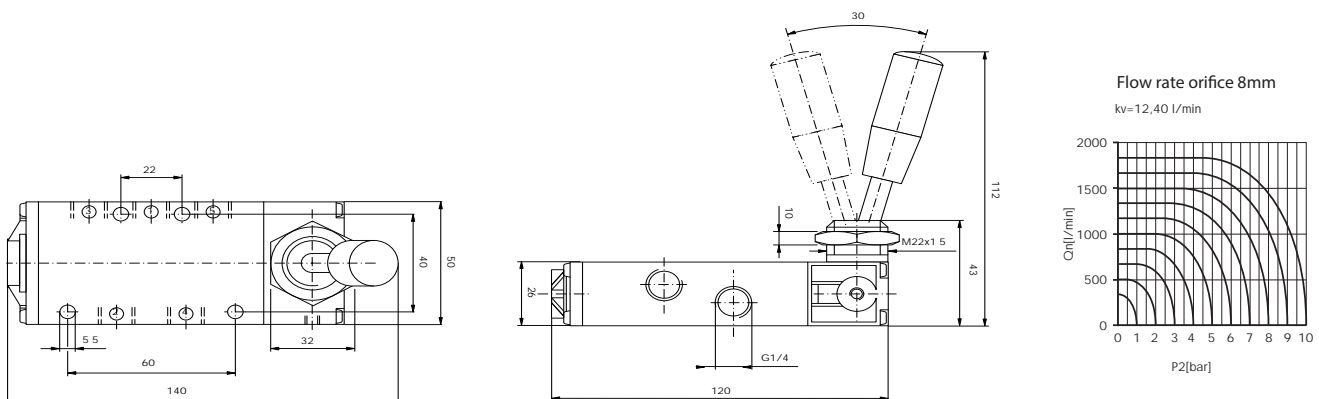
### Other information

For NPT ports use prefix code "75" for example 75.XXX.XX.XX  
 Bellows available 76.420.00.55 (5 pcs)

Symbol	Description	Type	Orifice	Ports	Lever	Order code
	5/2 way maintained position	Spool	8mm	G1/4	Black	<b>76.143.25.40</b>
	5/2 way spring return	Spool	8mm	G1/4	Black	<b>76.143.25.41</b>
	5/2 way maintained position with pilot return **	Spool	8mm	G1/4	Black	<b>76.143.25.42</b>

### Dimensional drawings

\*\*Dimensional drawing upon request



**Impulse Automation Limited**  
**United Kingdom**  
**Company Registration 665193**