

Air Pilot Operated Manifold Valves

5/2 Way G1/8 Double & Single Pilot Control

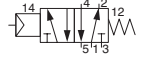
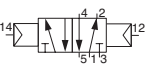
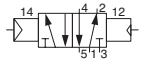
Technical information

Pressure range:	2-8 bar
Temperature range:	-5°C...+50°C
Flow rate:	800 NI/min
Housing:	Aluminium alloy
Sealing element:	Soft spool
Lubricant:	Not required
Operating medium:	5 micron filtered, lubricated or non-lubricated compressed air

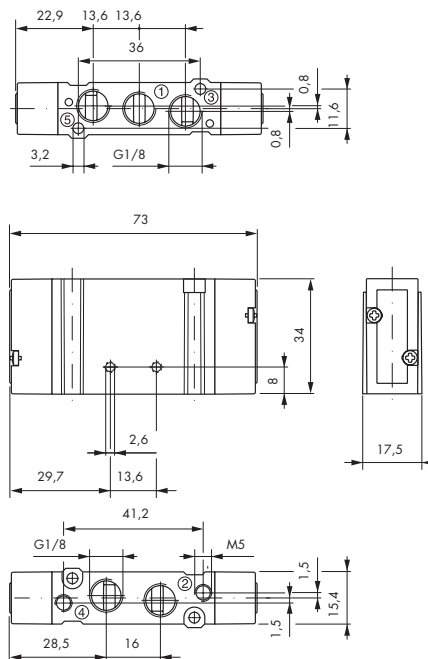


Other information

Subplates are available for this product, see data sheet M1018.

Symbol	Description	Type	Orifice	Ports	Order code
	5/2 way single pilot	Spool	6mm	G1/8	77.022.91.00
	5/2 way double pilot	Spool	6mm	G1/8	77.022.92.00
	5/2 way double pilot with priority	Spool	6mm	G1/8	77.022.93.00

Dimensional drawings



Impulse Automation Limited
United Kingdom
Company Registration 665193