

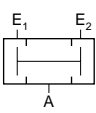
# Logic Valves & Flow Control

## Kuhnke Pneumatic AND Logic Valve

### Technical information

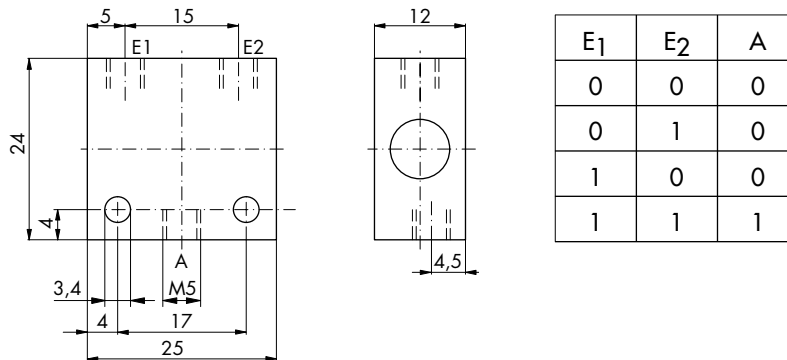
<b>Pressure range:</b>	Max. 8 bar
<b>Control pressure:</b>	> 1.0 bar
<b>Temperature range:</b>	-10°C...+70°C
<b>Materials:</b>	Aluminium alloy body
<b>Seals:</b>	Perbunan
<b>Nominal orifice:</b>	2mm
<b>Operating medium:</b>	5 micron filtered, lubricated or non-lubricated compressed air.



Symbol	Description	Ports	Order code
	AND logic valve	M5	47.002

### Dimensional drawings

With the dual pressure valve an output pulse A is generated when the input pulses E1 AND E2 are present.



**Impulse Automation Limited**  
**United Kingdom**  
**Company Registration 665193**