

# Pneumatic Flip-Flop Valve

## 5/2 Way Electrically Controlled Flip-Flop Valve

### Technical information

<b>Pressure range:</b>	2.5-10 bar
<b>Temperature range:</b>	-15°C...+50°C
<b>Housing:</b>	Die-cast and lacquered zinc alloy
<b>Seals:</b>	NBR
<b>Lubricant:</b>	Not required
<b>Earthing Contact:</b>	Part of the standard device.
<b>Operating medium:</b>	5 micron filtered, lubricated or non-lubricated compressed air

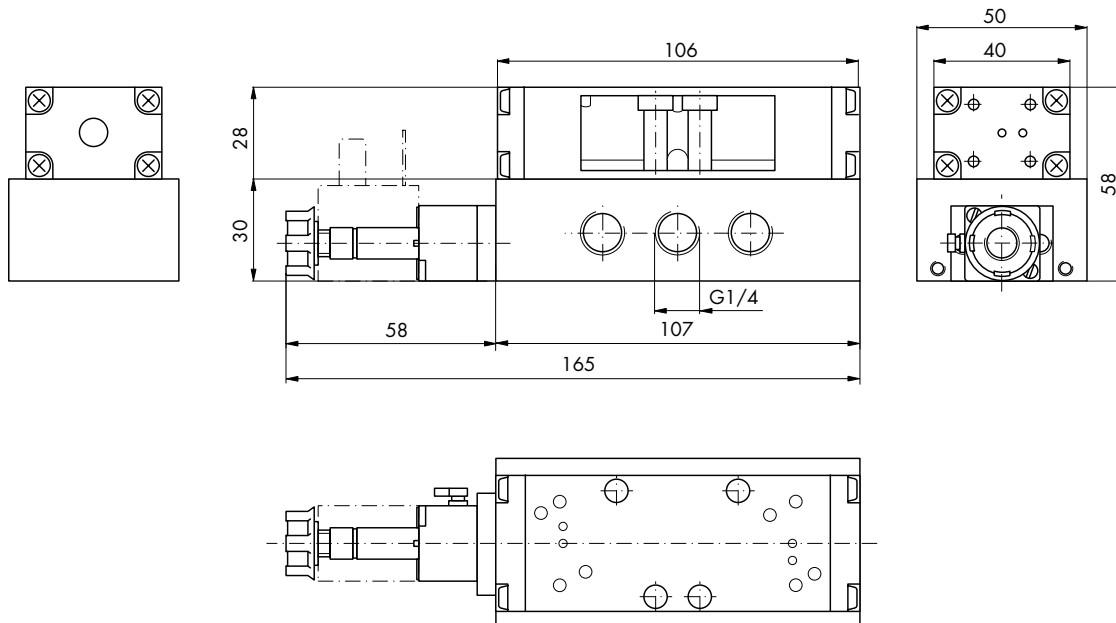


### Other information

The flip-flop valve provides a 5/2 way switched output from an electrical signal of at least 300ms in length. When an electrical signal is applied to the coil, the 5/2 way valve position changes and maintains its position until the next electrical signal is applied. Order coils & connecting plugs separately, see data sheet M1002.

Description	Orifice	Ports	Order code
5/2 way pulsed maintained position	8mm	G1/4	<b>76.083.89.00</b>

### Dimensional drawings



**Impulse Automation Limited**  
**United Kingdom**  
**Company Registration 665193**