

# Manually Operated Pneumatic Foot Pedal Valves

## Pneumatic Foot Pedal Valve G1/8 - 3/2 Way

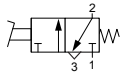
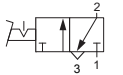
### Technical information

<b>Pressure range:</b>	0-10 bar
<b>Temperature range:</b>	-15°C...+50°C
<b>Housing:</b>	Plastic polycarbonate
<b>Seals:</b>	NBR
<b>Lubricant:</b>	Not required
<b>Operating medium:</b>	5 micron filtered, lubricated or non-lubricated compressed air

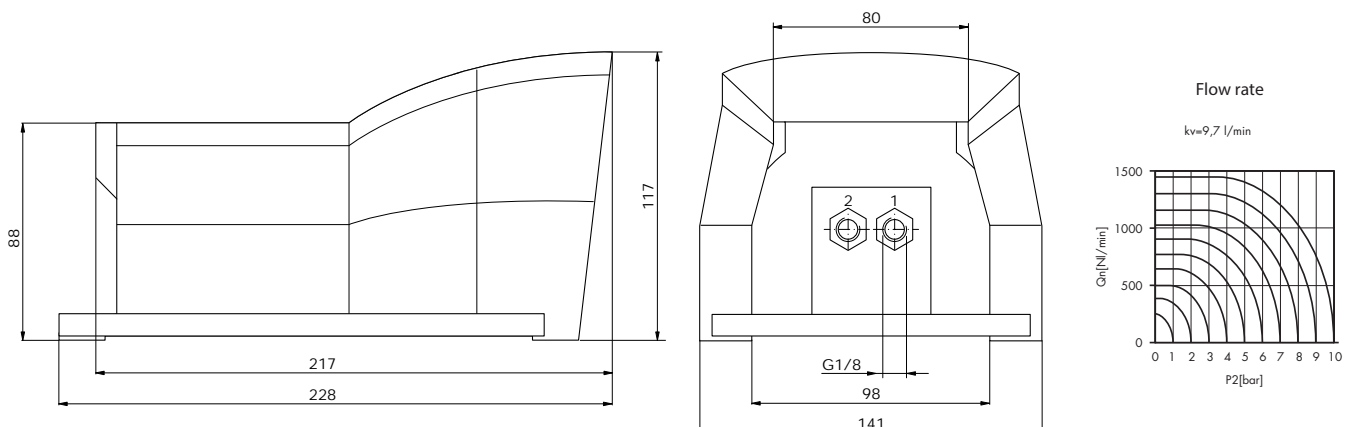


### Other information

For NPT ports use prefix code "75" for example 75.XXX.XX.XX

Symbol	Description	Ports	Colour	Order code
	3/2 way spring return normally closed	G1/8	Yellow	<b>76.026.68.21</b>
	3/2 way spring return normally closed	G1/8	Blue	<b>76.026.69.21</b>
	3/2 way maintained position with latch	G1/8	Yellow	<b>76.026.68.29</b>
	3/2 way maintained position with latch	G1/8	Blue	<b>76.026.69.29</b>

### Dimensional drawings



**Impulse Automation Limited**  
**United Kingdom**  
**Company Registration 665193**