

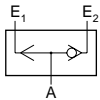
Logic Valves & Flow Control

Kuhnke Pneumatic OR Logic Valve

Technical information

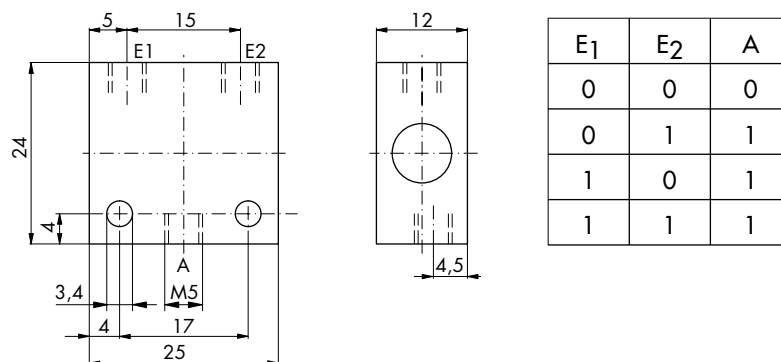
Pressure range: Max. 8 bar
Control pressure: > 1.0 bar
Temperature range: -10°C...+70°C
Materials: Aluminium alloy body
Seals: Perbunan
Nominal orifice: 2mm
Operating medium: 5 micron filtered, lubricated or non-lubricated compressed air.



Symbol	Description	Ports	Order code
	OR logic valve	M5	47.003

Dimensional drawings

With the shuttle valve an output pulse A is generated when either input pulse E1 OR E2 or both are present.



Impulse Automation Limited
United Kingdom
Company Registration 665193