

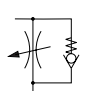
Logic Valves & Flow Control

Pneumatic One-Way Flow Control - Adjustable

Technical information

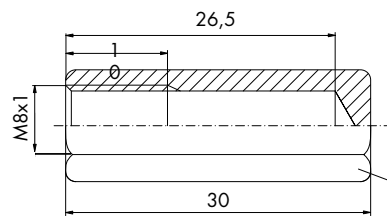
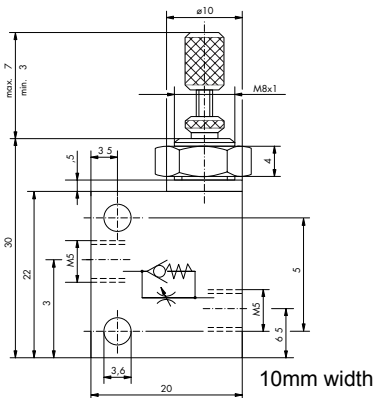
| | |
|---------------------------|---|
| Pressure range: | Max. 8 bar |
| Opening pressure: | ≥ 0.5 bar |
| Flow rates: | See graph below. |
| Temperature range: | -10°C...+70°C |
| Materials: | Brass body, stainless steel needle. |
| Operating medium: | 5 micron filtered, lubricated or non-lubricated compressed air. |



| Symbol | Description | Ports | Order code |
|---|---------------------------------------|-------|------------|
|  | One way flow control with locking nut | M5 | 47.255 |

Dimensional drawings

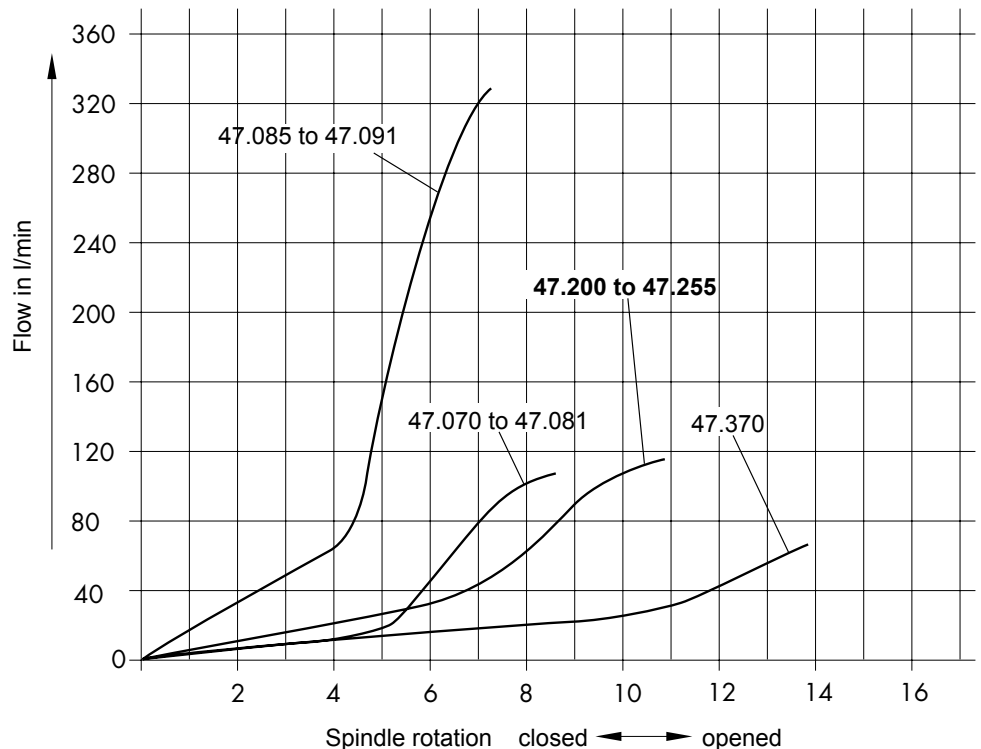
Clockwise rotation closes the flow control.



Protective Cover

Order code: **47.266**

The valve has a long flow control adjustment stem with a knurled knob to assist the precision setting of the device. A setting lock nut can be used to prevent tampering once the desired flow has been set. A screwdriver slot can be utilised if the device is used with a protective cover. Protective covers are used to prevent tampering, or to protect the long stem from accidental damage.



Impulse Automation Limited
 United Kingdom
 Company Registration 665193