

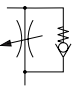
Logic Valves & Flow Control

Pneumatic One-Way Flow Control - Adjustable

Technical information

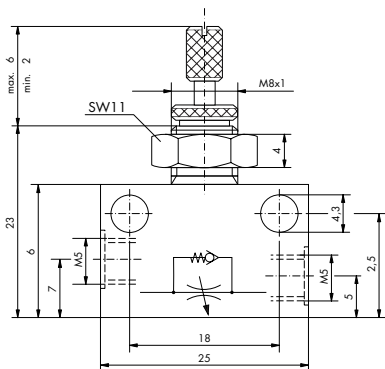
Pressure range:	Max. 8 bar
Opening pressure:	≥ 0.5 bar
Flow rates:	See graph below.
Temperature range:	-10°C...+70°C
Materials:	Mazak body, stainless steel needle.
Operating medium:	5 micron filtered, lubricated or non-lubricated compressed air.



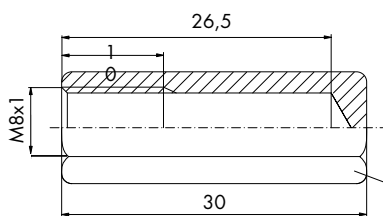
Symbol	Description	Ports	Order code
	One way flow control with locking nut	M5	47.370

Dimensional drawings

Clockwise rotation closes the flow control.



10mm width



Protective cover

Order Code: **47.266**

The valve has a long flow control adjustment stem with a knurled knob to assist the precision setting of the device. A setting lock nut can be used to prevent tampering once the desired flow has been set.

A screwdriver slot can be utilised if the device is used with a protective cover. Protective covers are used to prevent tampering, or to protect the long stem from accidental damage.

