

# Mechanically Operated Pneumatic Valves


## 3/2 Way Plunger Valve - Body Mounting

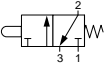
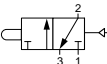
### Technical information

<b>Pressure range:</b>	0-10 bar
<b>Temperature range:</b>	-15°C...+50°C
<b>Housing:</b>	Die-cast and lacquered zinc alloy
<b>Seals:</b>	NBR
<b>Lubricant:</b>	Not required
<b>Operating medium:</b>	5 micron filtered, lubricated or non-lubricated compressed air

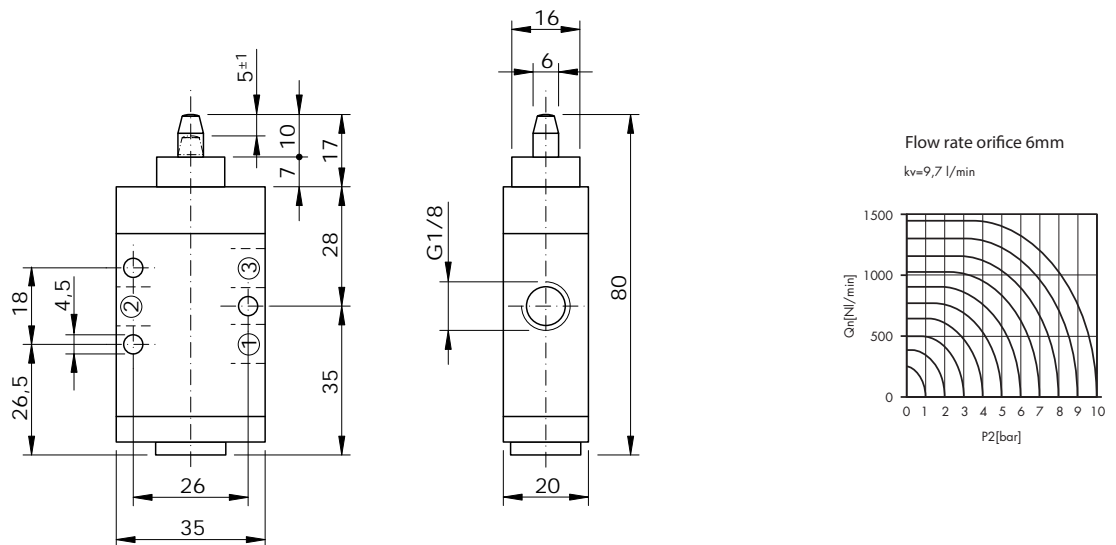


### Other information

 For ATEX certification use suffix code "EX" for example 76.XXX.XX.XX.EX  
 For NPT ports use prefix code "75" for example 75.XXX.XX.XX

Symbol	Description	Type	Orifice	Ports	Order code
	3/2 way spring return normally closed	Spool	6mm	G1/8	<b>76.022.21.21</b>
	3/2 way maintained position with pilot return **	Spool	6mm	G1/8	<b>76.022.21.22</b>

### Dimensional drawings \*\*Dimensional drawing upon request



**Impulse Automation Limited**  
**United Kingdom**  
**Company Registration 665193**