

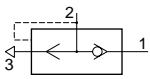
Logic Valves & Flow Control

Pneumatic Quick Exhaust Valve

Technical information

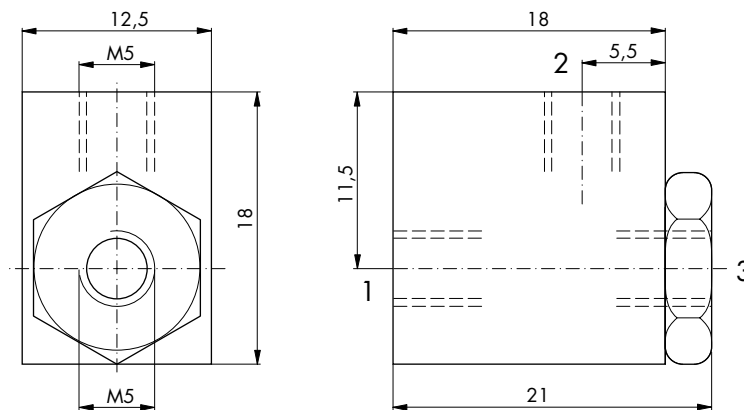
Pressure range: Max. 8 bar
Temperature range: -10°C...+75°C
Materials: Brass body
Nominal orifice: 2mm
Operating medium: 5 micron filtered, lubricated or non-lubricated compressed air.



Symbol	Description	Ports	Order code
	Quick exhaust valve	M5	47.300

Dimensional drawings

When the input signal is removed the output exhausts directly to atmosphere.



Impulse Automation Limited
United Kingdom
Company Registration 665193