

# Manually Operated Pneumatic Valves

## Pneumatic Push Button Valve - Mushroom Button


### Technical information

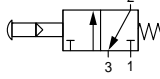
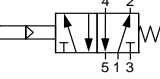
### Air Pilot Assisted

**Actuation force @ 6 bar:** 4N 3/2 way & 8N 5/2 way  
**Pressure range:** 2.5-10 bar  
**Temperature range:** -15°C...+50°C  
**Housing:** Die-cast and lacquered zinc alloy  
**Seals:** NBR  
**Lubricant:** Not required  
**Operating medium:** 5 micron filtered, lubricated or non-lubricated compressed air

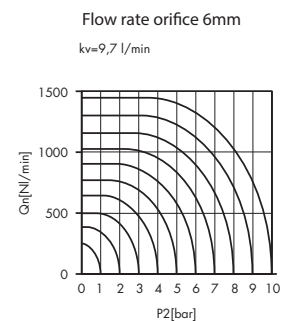
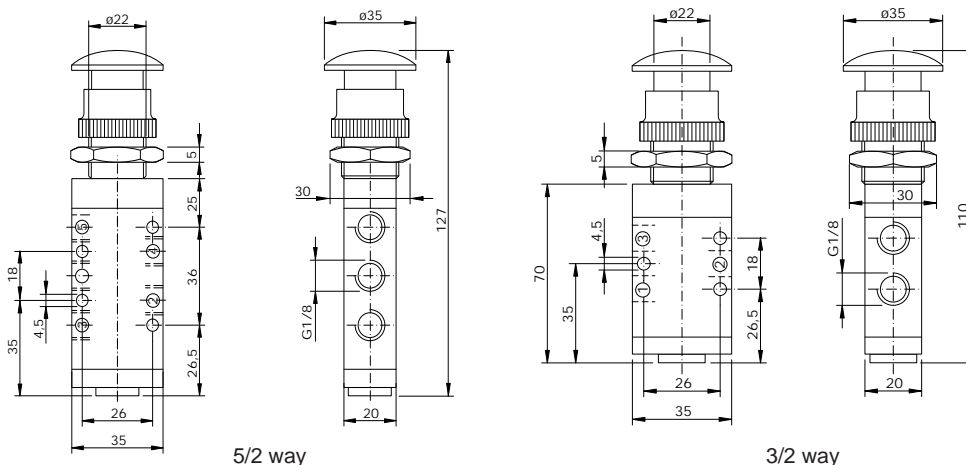


### Other information

 For ATEX certification use suffix code "EX" for example 76.XXX.XX.XX.EX  
 For NPT ports use prefix code "75" for example 75.XXX.XX.XX

Symbol	Description	Type	Orifice	Ports	Button	Order code
	3/2 way spring return normally closed	Spool	6mm	G1/8	Red	<b>76.022.65.21</b>
	3/2 way spring return normally closed	Spool	6mm	G1/8	Black	<b>76.022.65.23</b>
	3/2 way spring return normally closed	Spool	6mm	G1/8	Green	<b>76.022.65.24</b>
	5/2 way spring return	Spool	6mm	G1/8	Red	<b>76.023.65.41</b>
	5/2 way spring return	Spool	6mm	G1/8	Black	<b>76.023.65.43</b>
	5/2 way spring return	Spool	6mm	G1/8	Green	<b>76.023.65.44</b>

### Dimensional drawings



**Impulse Automation Limited**  
**United Kingdom**  
**Company Registration 665193**

Information shown in these data sheets are for guidance purposes only, no liability is accepted for any errors or omissions. The designer or user is solely responsible for the safe and proper use of these parts, assemblies or equipment described.