

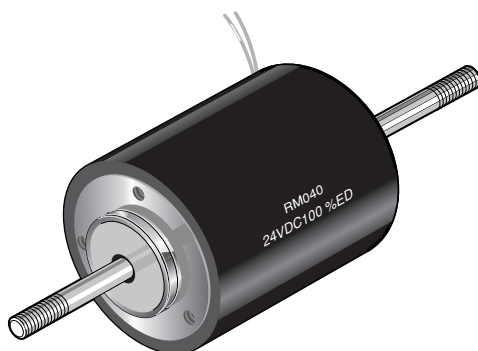
RM040 Series Linear Solenoid Push and/or Pull Type

Heavy duty linear solenoid RM 040

Weight:
Complete solenoid: appr. 380 g
Armature: appr. 60 g
Standard:
Voltage: 24 V DC
Flying leads: 10 cm
Insulation class: F (max. permissible temperature = 155 °C)

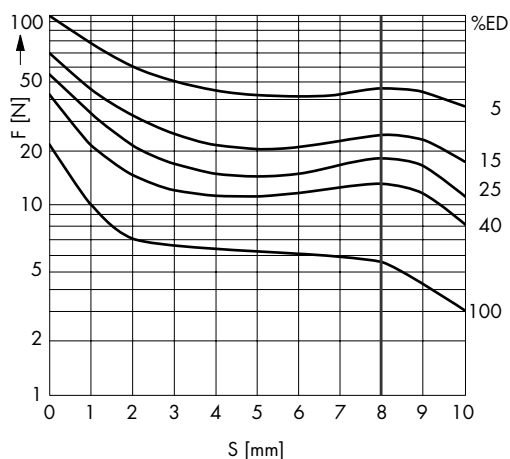
Service-free DU armature bearing for maximum durability.

Stroke of version with standard stroke limiter: 8 mm.



	100	40	25	15	5	%	Perm. duty cycle (ED) ²⁾
	11	21	41	67	161	W	Nominal coil power P _N
	36				11	ms	Actuation time (ED)

²⁾ If solenoid is mounted directly onto a flat metal surface, an increase in relative duty cycle is permissible (please ask for advice)



Force vs. Stroke diagram $F = f(s)$

Force measured when operating in horizontal position, at 90 % rated voltage and with winding at operating temperature

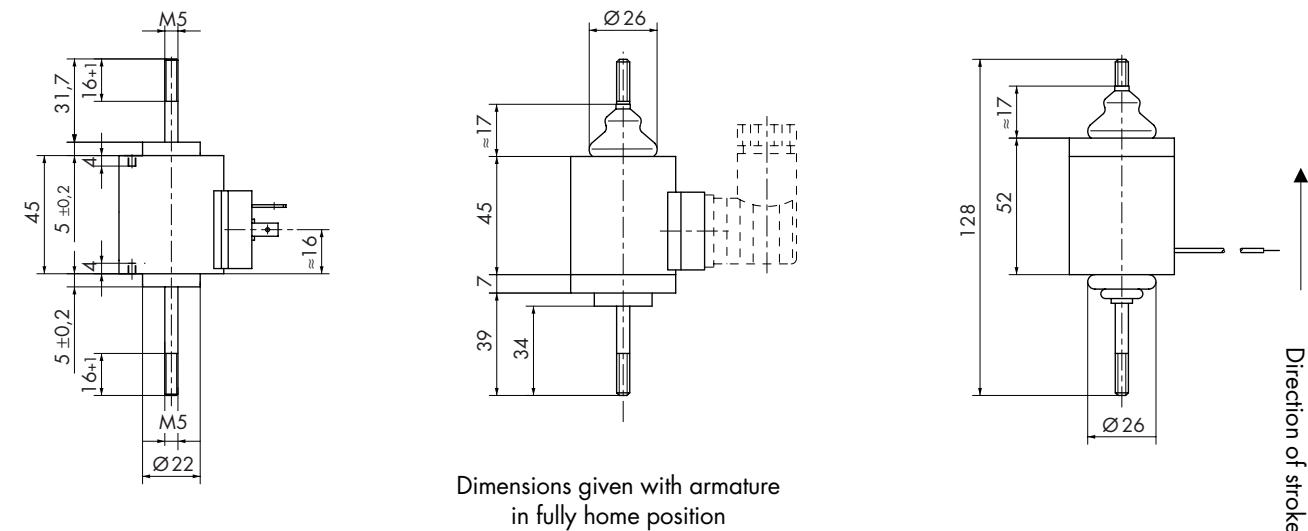
stroke $s = 0$ corresponds to armature in fully home position

Impulse Automation Limited
United Kingdom
Company Registration 665193

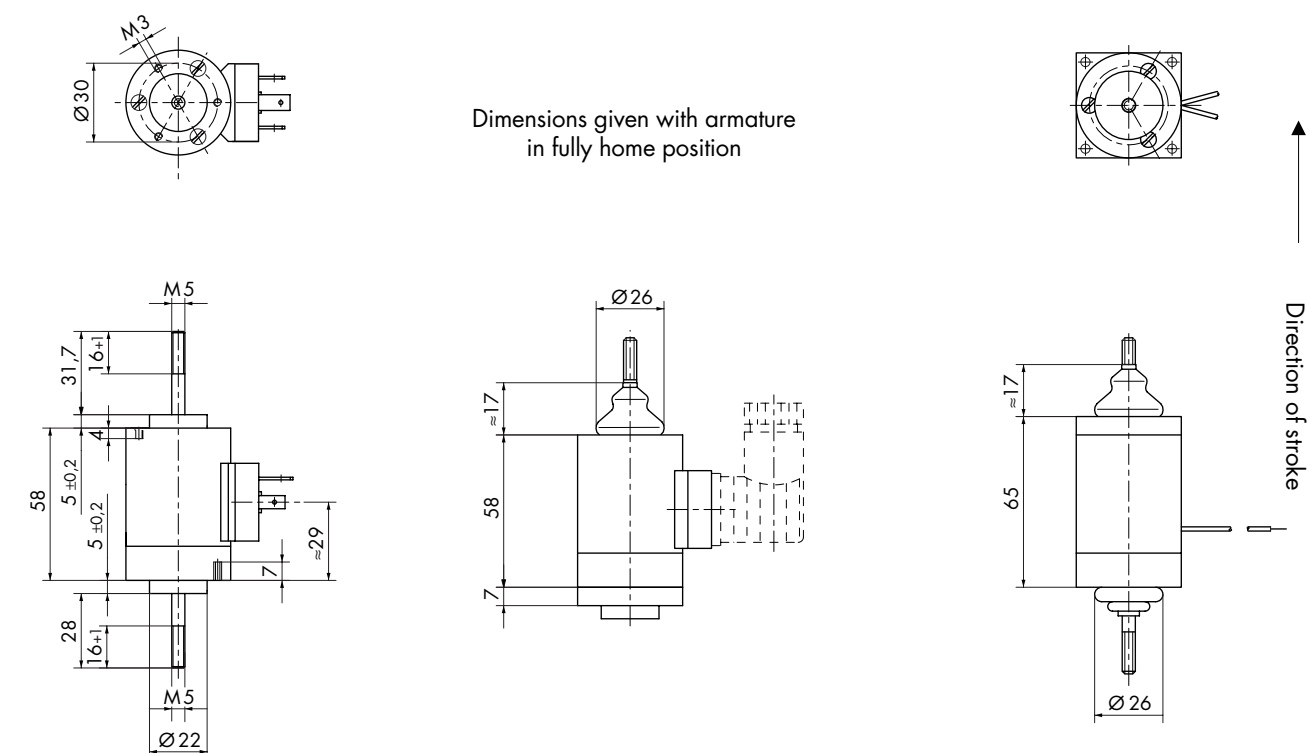
Information shown in these data sheets are for guidance purposes only, no liability is accepted for any errors or omissions. The designer or user is solely responsible for the safe and proper use of these parts, assemblies or equipment described.

RM040 Series Linear Solenoid Push and/or Pull Type

without stroke limiter



with stroke limiter

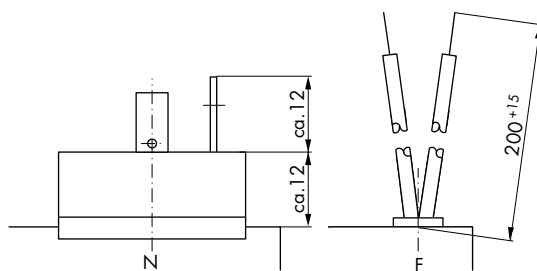


Impulse Automation Limited
United Kingdom
Company Registration 665193

Information shown in these data sheets are for guidance purposes only, no liability is accepted for any errors or omissions. The designer or user is solely responsible for the safe and proper use of these parts, assemblies or equipment described.

RM040 Series Ordering Information

RM	040	- W -	O	R	O	R	- N -	24 V DC	100 % ED	Order specifications	
RM										Linear solenoid series	
	040									Design type Ø mm	
		W								Horizontal frontal force vs. stroke output	
										Description ²⁾	
			O							Stroke limit	without
			H								with
				R						Plunger	right hand side ³⁾
				B							both sides
					O					Flange	without
					R						right hand side ³⁾
					L						left hand side ⁴⁾
						O				Gaiter	without
						R					right hand side ³⁾
						L					left hand side ⁴⁾
						B					both sides
							F			Coil terminals	Flying leads (10 cm standard length)
							N				plug-in socket connection ⁶⁾
								24		Operating voltage	24 V DC
								205			205 V DC (connected to 230 V AC with SI- bridge rectifier)
									100 % ED	Perm. duty cycle under air cooled conditions (LK)	

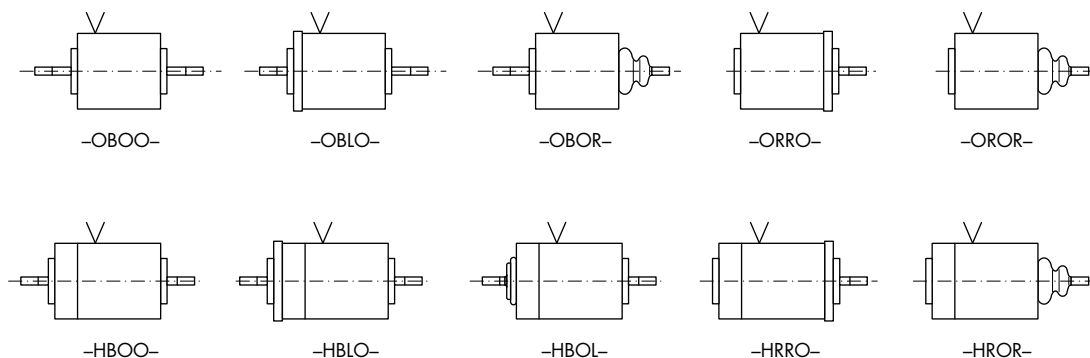


- 2) See below
- 3) Opposite to electrical connection
- 4) Same side as electrical connection
- 6) For plug-in socket 6.3 DIN 46247 and plug Z801 and Z811

Coil terminals

Examples of design types:

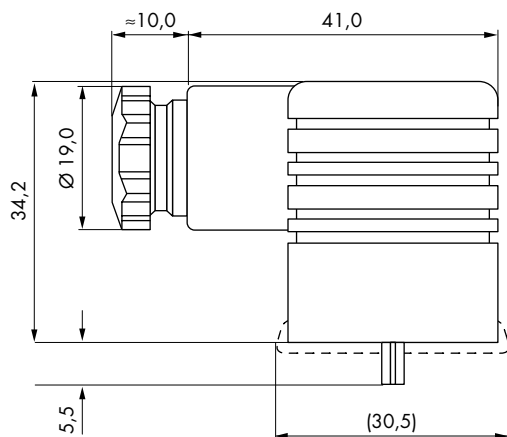
Direction of stroke



Impulse Automation Limited
United Kingdom
Company Registration 665193

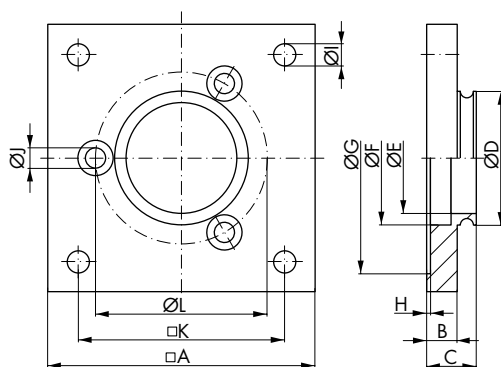
Information shown in these data sheets are for guidance purposes only, no liability is accepted for any errors or omissions. The designer or user is solely responsible for the safe and proper use of these parts, assemblies or equipment described.

RM040 Series Accessories



Plug-in socket Z801
Screw joint PG 9
for lead diameter 4.5 - 7 mm

Plug-in socket Z811
Screw joint PG 11
for lead diameter 6 - 9 mm
Plug-in socket with built in
Si-bridge rectifier

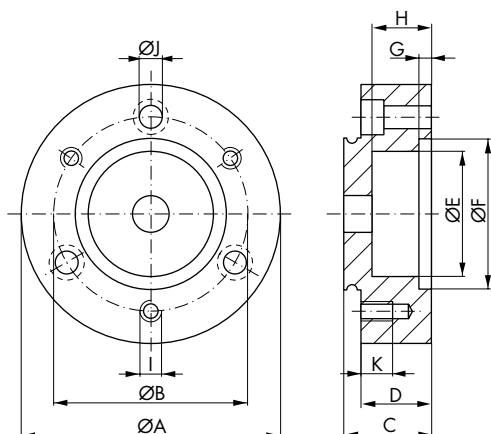


Flange
(Mounting screws are part of the
shipment)

Order specification

Order number	Type	Dimensions (mm)										Dimensions (mm)				Type	Order number
		A	B	C	D	E	F	G	H	I	J	K	L				
Z 837	RM 040	40,0	7,0	12,0	22,0	18,6	22,0	–	–	3,5	3,4	33,0	30,0	RM 040	Z 837		

RM040 Series Accessories

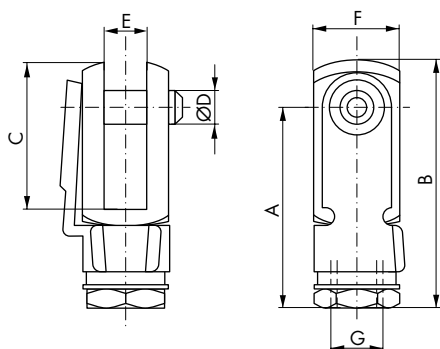


Stroke limiter

(Mounting screws are part of the shipment)

Order specification

Order number	Type	Dimensions (mm)										Dimensions (mm)		Type	Order number
		A	B	C	D	E	F	G	H	I	J	K			
Z 836	RM 040	40,0	30,0	18,0	13,0	19,0	22,0	5,5	10,0	M3	3,4	7,0	RM 040	Z 836	



Fork

Order-number	A	B	C	D	E	F	Connec-tion G
37.304	23	29	16	5	5	10	M5

Impulse Automation Limited
United Kingdom
Company Registration 665193

Information shown in these data sheets are for guidance purposes only, no liability is accepted for any errors or omissions.
The designer or user is solely responsible for the safe and proper use of these parts, assemblies or equipment described.