

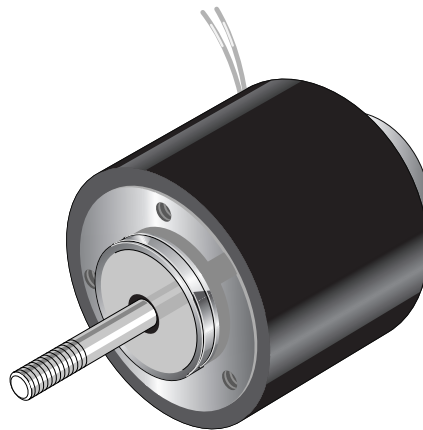
RM050 Series Linear Solenoid Push and/or Pull Type

Heavy duty linear solenoid RM 050

Weight:
 Complete solenoid: appr. 610 g
 Armature: appr. 200 g
 Standard:
 Voltage: 24 V DC
 Flying leads: 20 cm
 Insulation class: F (max. permissible temperature = 155 °C)

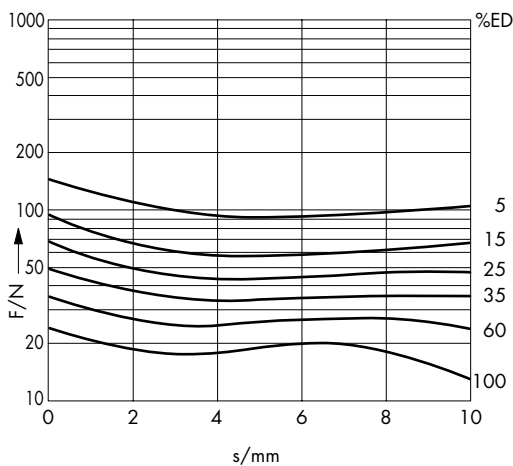
Service-free DU armature bearing for maximum durability.

Stroke of version with standard stroke limiter: 10 mm.



	100	60	35	25	15	5	% Perm. duty Cycle (ED) ¹⁾	
	20	30	55	70	115	300	W Nominal coil power P _n	
	40						15	ms Actuation time (ED)

¹⁾ If solenoid is mounted directly onto a flat metal surface the duty cycle can be extended (please ask for advice)



Force vs. Stroke diagram $F = f(s)$

W = horizontal characteristic

Force measured when operating in horizontal position, at 90 % rated voltage and winding at operating temperature

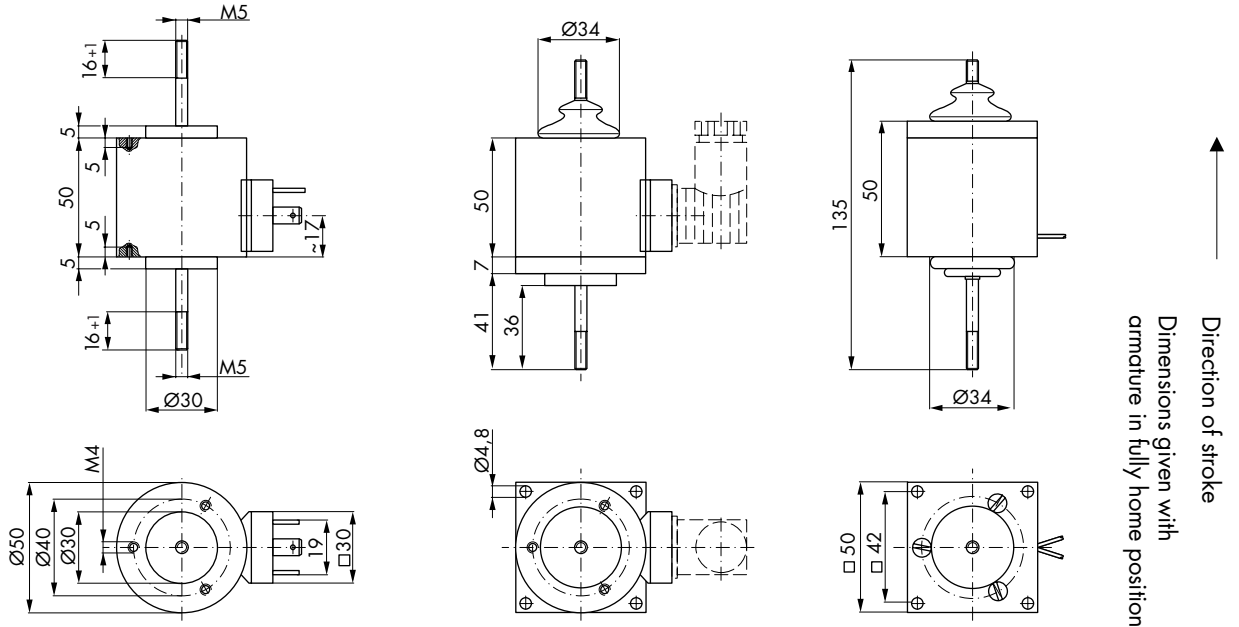
stroke $s = 0$ corresponds to armature in fully home position

Impulse Automation Limited
United Kingdom
Company Registration 665193

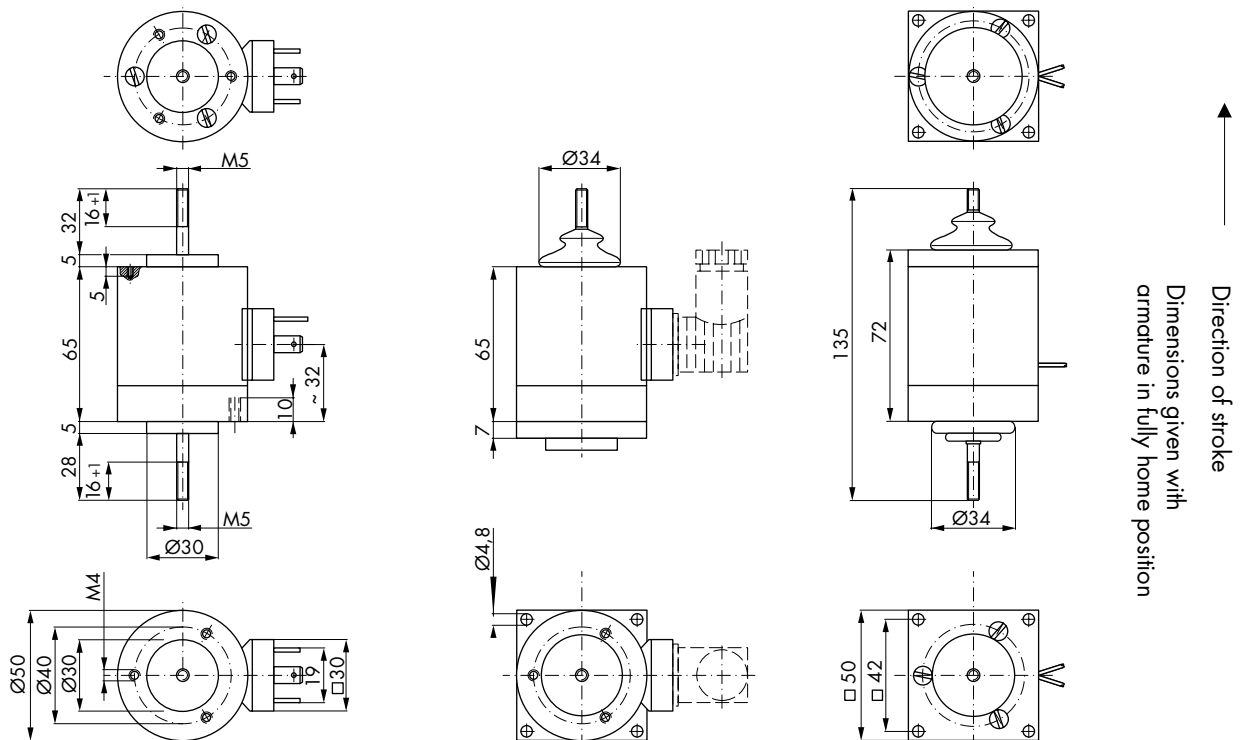
Information shown in these data sheets are for guidance purposes only, no liability is accepted for any errors or omissions. The designer or user is solely responsible for the safe and proper use of these parts, assemblies or equipment described.

RM050 Series Linear Solenoid Push and/or Pull Type

without stroke limiter



with stroke limiter



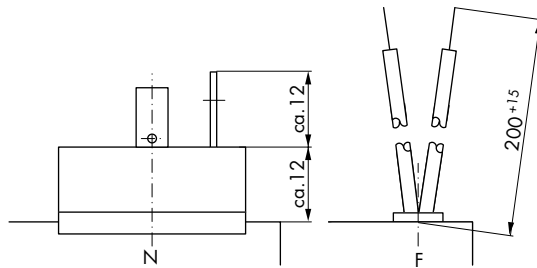
Impulse Automation Limited
 United Kingdom
 Company Registration 665193

Information shown in these data sheets are for guidance purposes only, no liability is accepted for any errors or omissions. The designer or user is solely responsible for the safe and proper use of these parts, assemblies or equipment described.

RM050 Series Ordering Information

RM	050	- W -	O	R	O	R	- N -	24 V DC	100 % ED	Order specifications
RM										Linear solenoid series
	050									Design type \varnothing mm
		W								Horizontal frontal force vs. stroke output
										Description ²⁾
			O							Stroke limit
			H							without
										with
				R						Plunger
				B						right hand side ³⁾
										both sides
					O					Flange
					R					without
					L					right hand side ³⁾
										left hand side ⁴⁾
						O				Gaiter
						R				without
						L				right hand side ³⁾
						B				left hand side ⁴⁾
							F			Coil terminals
							N			Flying leads (20 cm standard length)
								24		plug-in socket connection ⁶⁾
								205		
									100 % ED	Perm. duty cycle under air cooled conditions (LK)

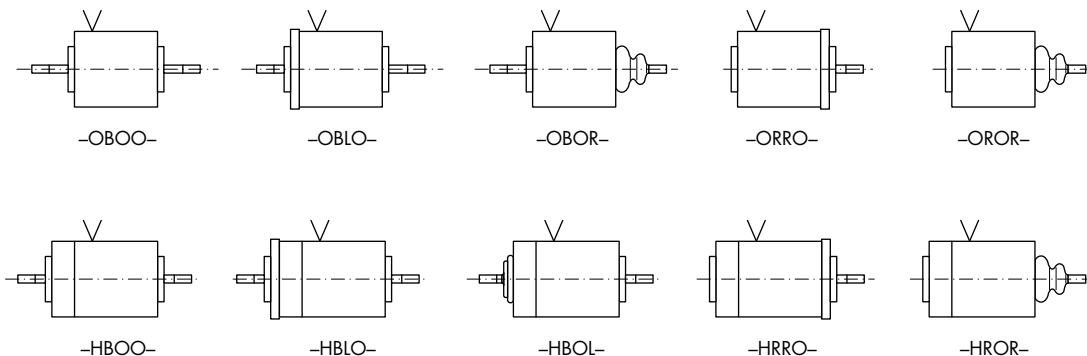
- ²⁾ See below
- ³⁾ Opposite to electrical connection
- ⁴⁾ Same side as electrical connection
- ⁶⁾ For plug-in socket 6.3 DIN 46247 and plug Z801 and Z811



Coil terminals

Examples of design types:

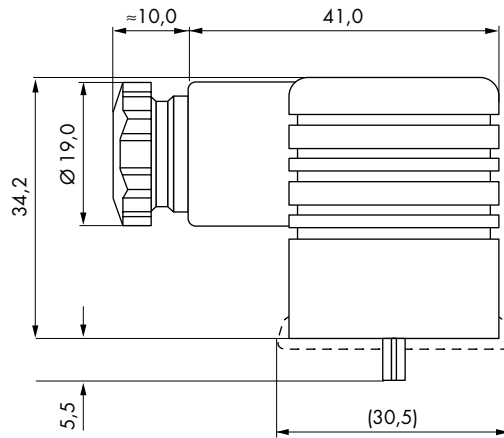
→
Direction of stroke



**Impulse Automation Limited
 United Kingdom
 Company Registration 665193**

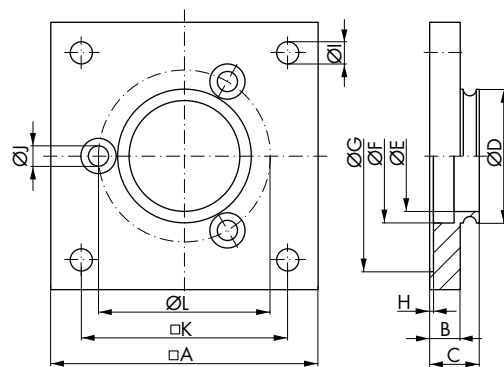
Information shown in these data sheets are for guidance purposes only, no liability is accepted for any errors or omissions. The designer or user is solely responsible for the safe and proper use of these parts, assemblies or equipment described.

RM050 Series Accessories



Plug-in socket Z801
 Screw joint PG 9
 for lead diameter 4.5 - 7 mm

Plug-in socket Z811
 Screw joint PG 11
 for lead diameter 6 - 9 mm
 Plug-in socket with built in
 Si-bridge rectifier

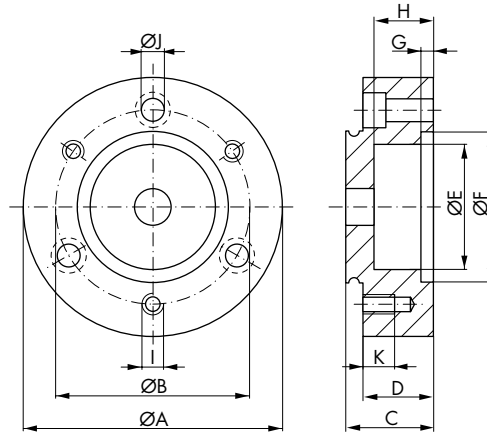


Flange
 (Mounting screws are part of the
 shipment)

Order specification

Order number	Type	Dimensions (mm)												Type	Order number
		A	B	C	D	E	F	G	H	I	J	K	L		
Z 839	RM 050	50,0	7,0	12,0	30,0	23,0	30,0	-	-	4,8	4,3	42,0	40,0	RM 050	Z 839

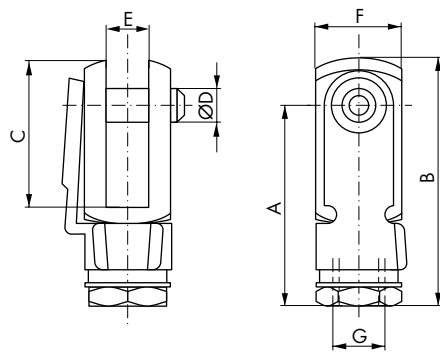
RM050 Series Accessories



Stroke limiter
 (Mounting screws are part of the shipment)

Order specification

Order number	Type	Dimensions (mm)										Type	Order number	
		A	B	C	D	E	F	G	H	I	J			K
Z 838	RM 050	50,0	40,0	20,0	15,0	23,0	30,0	5,5	11,0	M4	4,3	10,0	RM 050	Z 838



Fork

Order-number	A	B	C	D	E	F	Connec-tion G
37.304	23	29	16	5	5	10	M5

Impulse Automation Limited
United Kingdom
Company Registration 665193

Information shown in these data sheets are for guidance purposes only, no liability is accepted for any errors or omissions. The designer or user is solely responsible for the safe and proper use of these parts, assemblies or equipment described.