

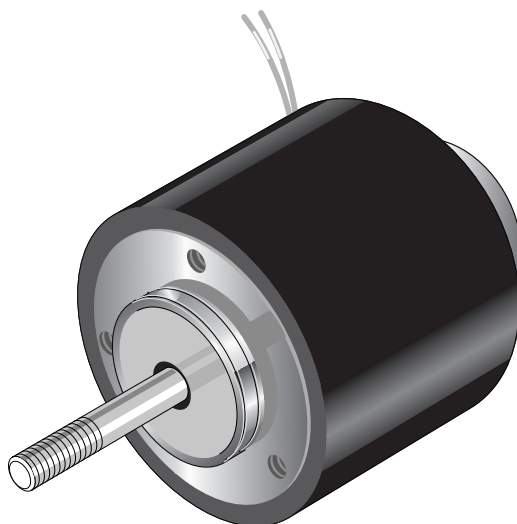
RM070 Series Linear Solenoid Push and/or Pull Type

Heavy duty linear solenoid RM 070

Weight:
Complete solenoid: appr. 2000 g
Armature: appr. 400 g
Standard:
Voltage: 24 V DC
Flying leads: 20 cm
Insulation class: F (max. permissible temperature = 155 °C)

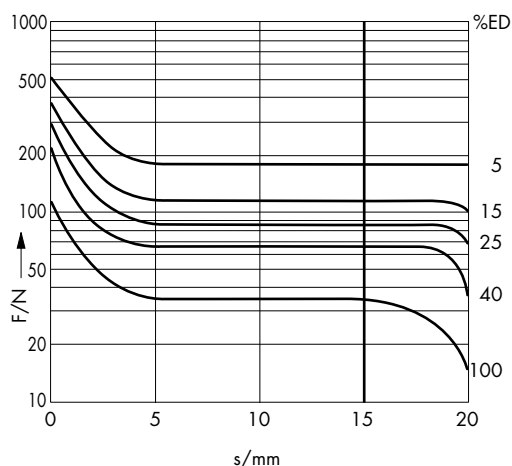
Service-free DU armature bearing for maximum durability.

Stroke of version with standard stroke limiter: 15 mm.



| | 100 | 40 | 25 | 15 | 5 | % Perm. duty Cycle (ED) ¹⁾ |
|--|-----|----|-----|-----|-----|---------------------------------------|
| | 31 | 78 | 121 | 198 | 472 | W Nominal coil power P _n |
| | 54 | | | | 25 | ms Actuation time (ED) |

¹⁾ If solenoid is mounted directly onto a flat metal surface the duty cycle can be extended (please ask for advice)



Force vs. Stroke diagram $F = f(s)$

W = horizontal characteristic

Force measured when operating in horizontal position, at 90 % rated voltage and winding at operating temperature

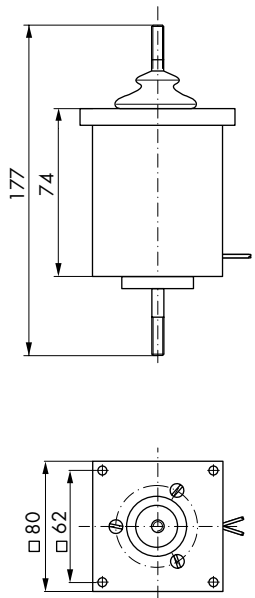
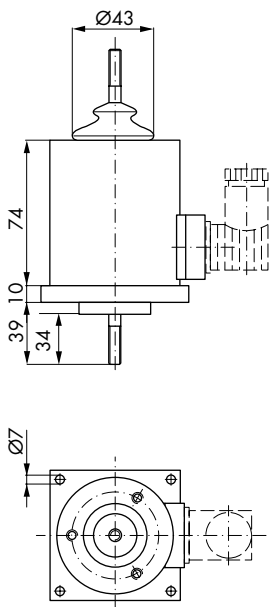
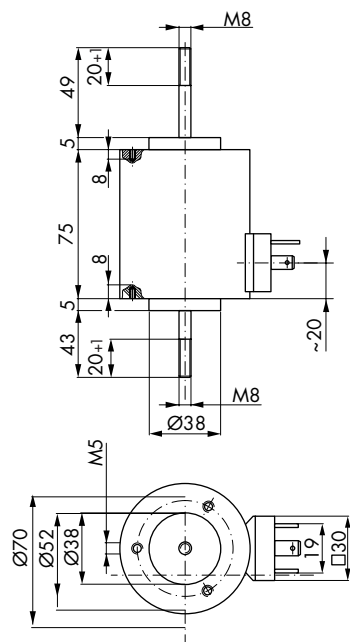
stroke $s = 0$ corresponds to armature in fully home position

Impulse Automation Limited
United Kingdom
Company Registration 665193

Information shown in these data sheets are for guidance purposes only, no liability is accepted for any errors or omissions. The designer or user is solely responsible for the safe and proper use of these parts, assemblies or equipment described.

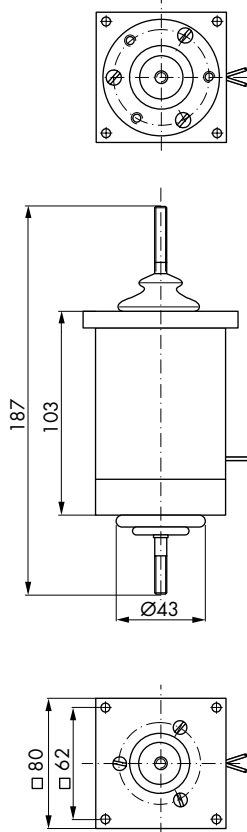
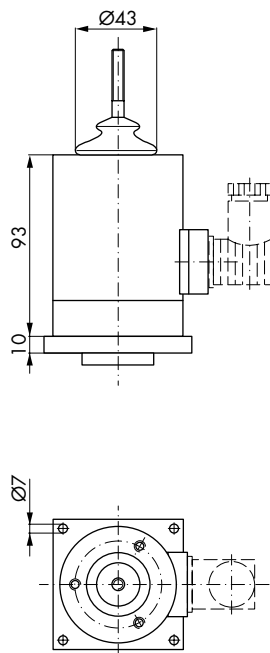
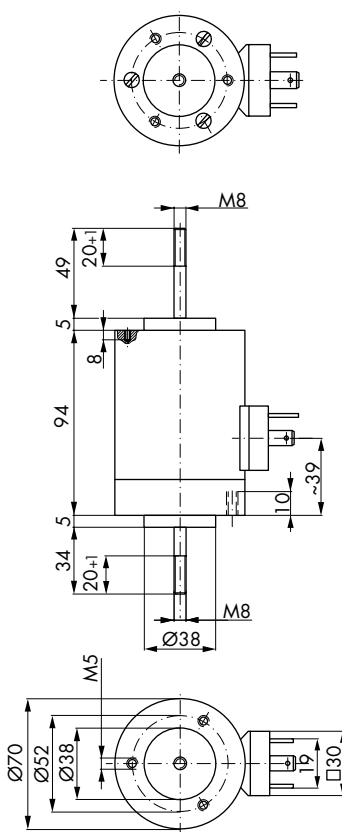
RM070 Series Linear Solenoid Push and/or Pull Type

without stroke limiter



Direction of stroke
↑
Dimensions given with
armature in fully home position

with stroke limiter

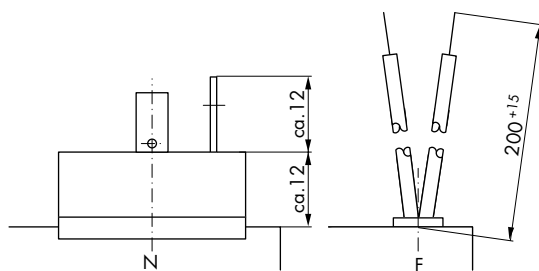


Direction of stroke
↑
Dimensions given with
armature in fully home position

Impulse Automation Limited
United Kingdom
Company Registration 665193

Information shown in these data sheets are for guidance purposes only, no liability is accepted for any errors or omissions.
The designer or user is solely responsible for the safe and proper use of these parts, assemblies or equipment described.

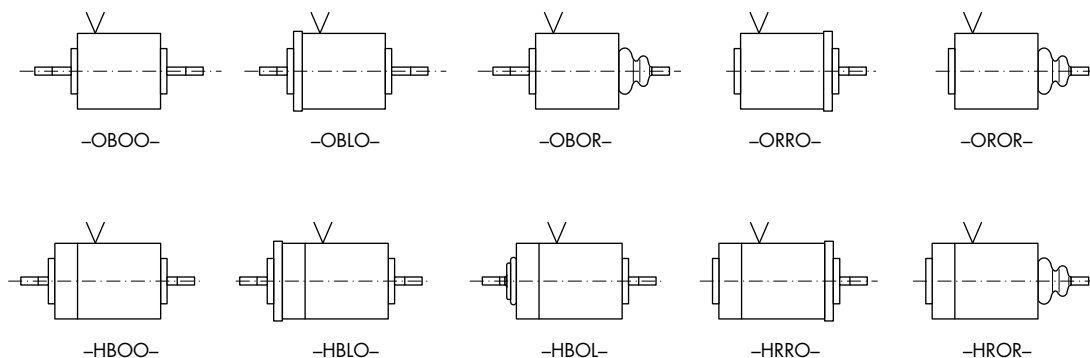
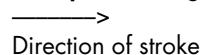
| RM | 070 | - W - | O | R | O | R | - N - | 24 V DC | 100 % ED | Order specifications | |
|-----------|------------|-------|---|---|---|---|-------|----------------|-----------------|---|---|
| RM | | | | | | | | | | Linear solenoid series | |
| | 070 | | | | | | | | | Design type Ø mm | |
| | | | | | | | | | | | |
| | | | | | | | | | | | |
| | | | | | | | | | | | |
| | | | | | | | | | | | |
| | | | | | | | | | | | |
| | | | | | | | | | | | |
| | | | | | | | | | | | |
| | | | | | | | | | | | |
| | | | | | | | | | | | |
| | | | | | | | | | | | |
| | | | | | | | | | | | |
| | | | | | | | | | | | |
| | | | | | | | | | | | |
| | | W | | | | | | | | Horizontal frontal force vs. stroke output | |
| | | | | | | | | | | Description ²⁾ | |
| | | | O | | | | | | | Stroke limit | without |
| | | | H | | | | | | | | with |
| | | | | R | | | | | | Plunger | right hand side ³⁾ |
| | | | | B | | | | | | | both sides |
| | | | | | O | | | | | Flange | without |
| | | | | | R | | | | | | right hand side ³⁾ |
| | | | | | L | | | | | | left hand side ⁴⁾ |
| | | | | | | O | | | | Gaiter | without |
| | | | | | | R | | | | | right hand side ³⁾ |
| | | | | | | L | | | | | left hand side ^{4) 5)} |
| | | | | | | B | | | | | both sides ⁵⁾ |
| | | | | | | F | | | | Coil terminals | Flying leads (20 cm standard length) |
| | | | | | | N | | | | | plug-in socket connection ⁶⁾ |
| | | | | | | | | 24 | | Operating voltage | 24 V DC |
| | | | | | | | | 205 | | | 205 V DC (connected to 230 V AC with SI- bridge rectifier) |
| | | | | | | | | 100 % ED | | Perm. duty cycle under air cooled conditions [LK] | |



- 2) See below
- 3) Opposite to electrical connection
- 4) Same side as electrical connection
- 5) Available with stroke limit only
- 6) For plug-in socket 6.3 DIN 46247 and plug Z801 and Z811

Coil terminals

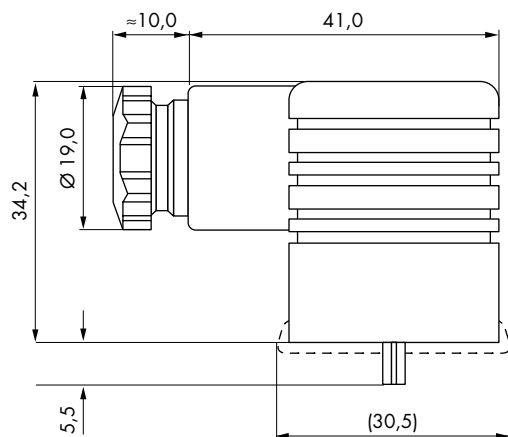
Examples of design types:



Impulse Automation Limited
United Kingdom
Company Registration 665193

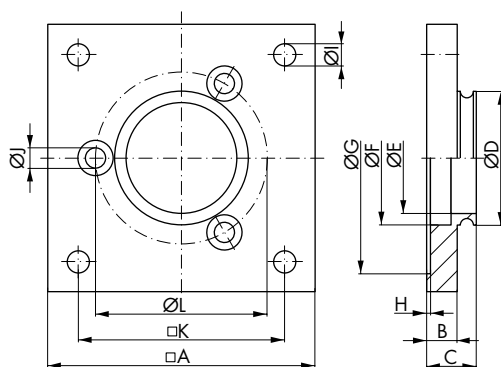
Information shown in these data sheets are for guidance purposes only, no liability is accepted for any errors or omissions. The designer or user is solely responsible for the safe and proper use of these parts, assemblies or equipment described.

RM070 Series Accessories



Plug-in socket Z801
Screw joint PG 9
for lead diameter 4.5 - 7 mm

Plug-in socket Z811
Screw joint PG 11
for lead diameter 6 - 9 mm
Plug-in socket with built in
Si-bridge rectifier

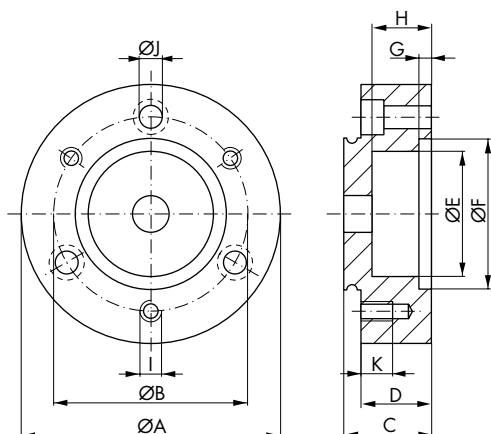


Flange
(Mounting screws are part of the
shipment)

Order specification

| Order number | Type | Dimensions (mm) | | | | | | | | | | Dimensions (mm) | | | Type | Order number |
|-----------------|--------|-----------------|------|------|------|------|------|------|-----|-----|-----|-----------------|------|--------|-------|-----------------|
| | | A | B | C | D | E | F | G | H | I | J | K | L | | | |
| Z 841 | RM 070 | 80,0 | 10,0 | 15,0 | 38,0 | 32,5 | 38,0 | 70,5 | 1,0 | 7,0 | 5,3 | 62,0 | 52,0 | RM 070 | Z 841 | |

RM070 Series Accessories

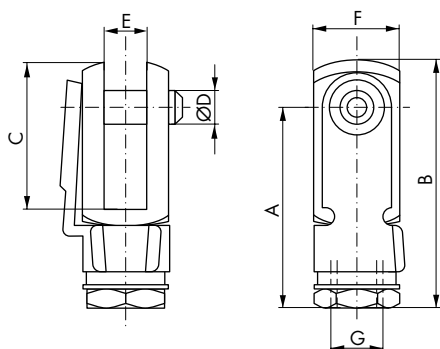


Stroke limiter

(Mounting screws are part of the shipment)

Order specification

| Order number | Type | Dimensions (mm) | | | | | | | | | | Dimensions (mm) | | Type | Order number |
|--------------|--------|-----------------|------|------|------|------|------|-----|------|----|-----|-----------------|--------|-------|--------------|
| | | A | B | C | D | E | F | G | H | I | J | K | | | |
| Z 846 | RM 070 | 70,0 | 52,0 | 24,0 | 19,0 | 33,0 | 38,0 | 5,5 | 15,0 | M5 | 5,3 | 10,0 | RM 070 | Z 846 | |



Fork

| Order-number | A | B | C | D | E | F | Connec-tion G |
|----------------------|----|----|----|---|---|----|---------------|
| 35.304 ¹⁾ | 32 | 42 | 26 | 8 | 8 | 16 | M8 |

¹⁾ Forks are galvanised and chromed yellow.
Supplied without a nut. Secure using e.g. Loctite or a similar product.

Impulse Automation Limited
United Kingdom
Company Registration 665193

Information shown in these data sheets are for guidance purposes only, no liability is accepted for any errors or omissions.
The designer or user is solely responsible for the safe and proper use of these parts, assemblies or equipment described.