

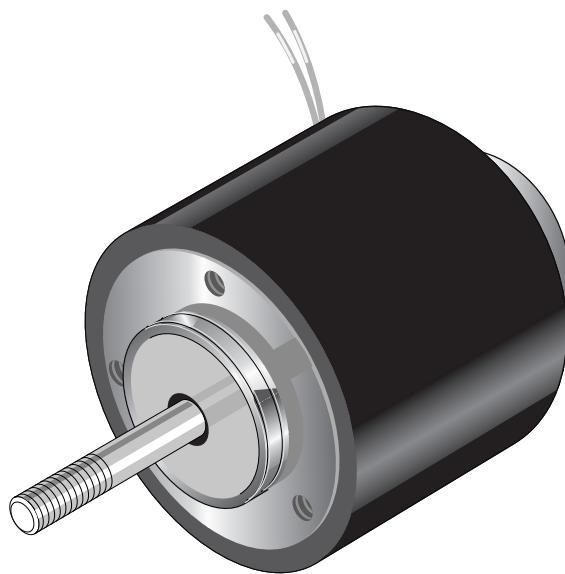
RM080 Series Linear Solenoid Push and/or Pull Type

Heavy duty linear solenoid RM 080

Weight:
Complete solenoid: appr. 2900 g
Armature: appr. 500 g
Standard:
Voltage: 24 V DC
Flying leads: 20 cm
Insulation class: F (max. permissible temperature = 155 °C)

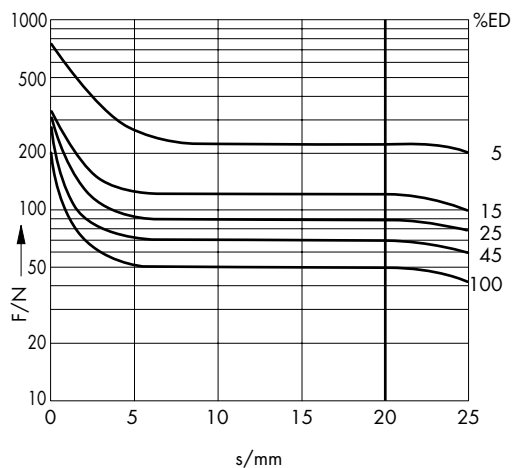
Service-free DU armature bearing for maximum durability.

Stroke of version with standard stroke limiter: 20 mm.



%	100	45	25	15	5	% Perm. duty Cycle (ED) ¹⁾
W	37	94	149	226	685	W Nominal coil power P _n
ms	75				34	ms Actuation time (ED)

¹⁾ If solenoid is mounted directly onto a flat metal surface the duty cycle can be extended (please ask for advice)



Force vs. Stroke diagram $F = f(s)$

W = horizontal characteristic

Force measured when operating in horizontal position, at 90 % rated voltage and winding at operating temperature

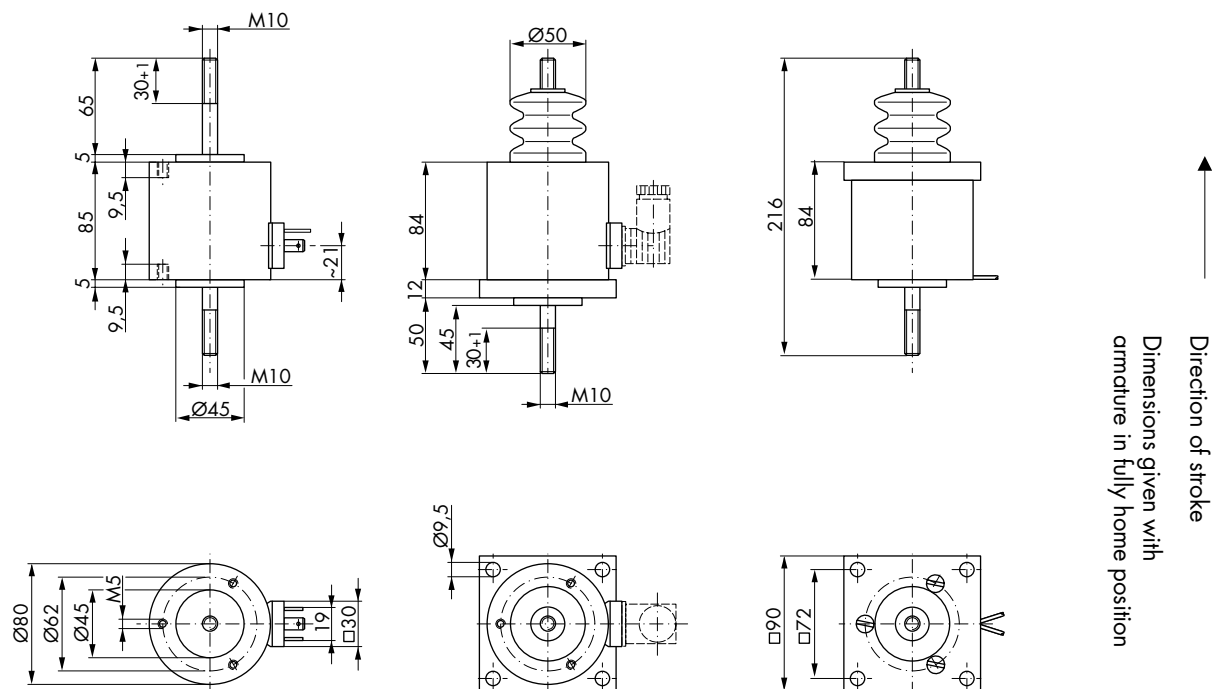
stroke $s = 0$ corresponds to armature in fully home position

Impulse Automation Limited
United Kingdom
Company Registration 665193

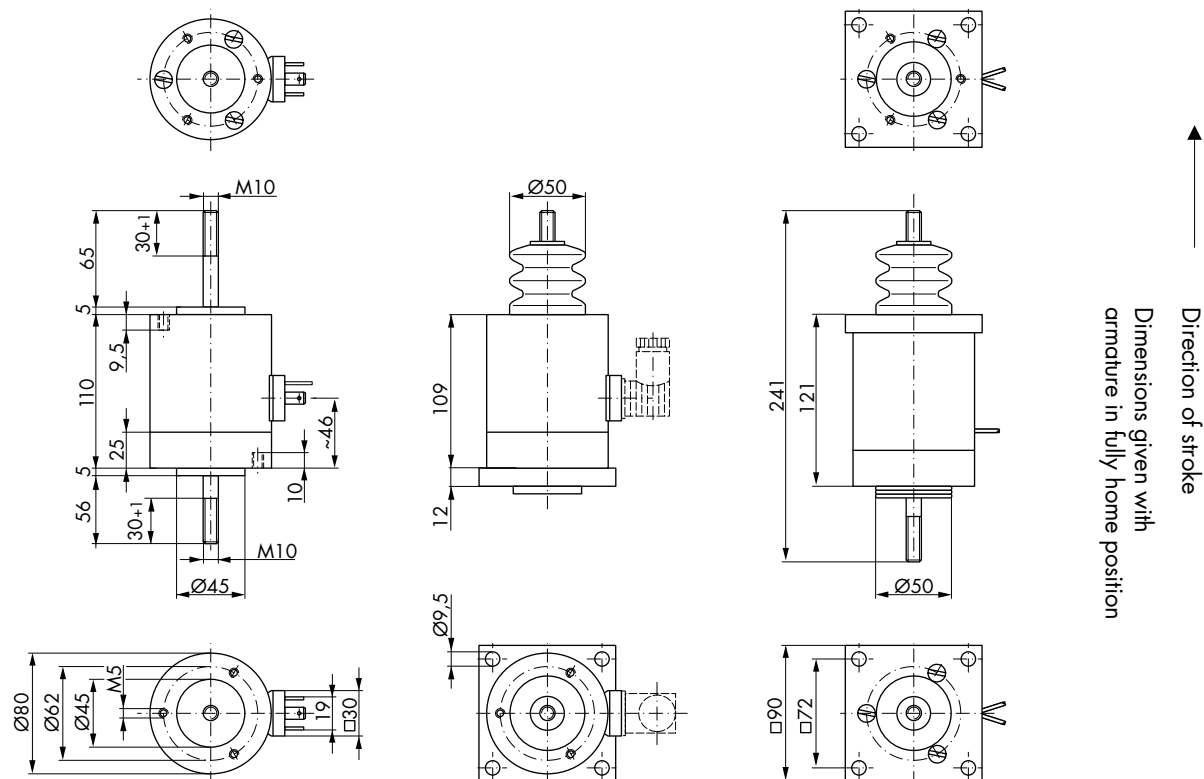
Information shown in these data sheets are for guidance purposes only, no liability is accepted for any errors or omissions. The designer or user is solely responsible for the safe and proper use of these parts, assemblies or equipment described.

RM080 Series Linear Solenoid Push and/or Pull Type

without stroke limiter



with stroke limiter

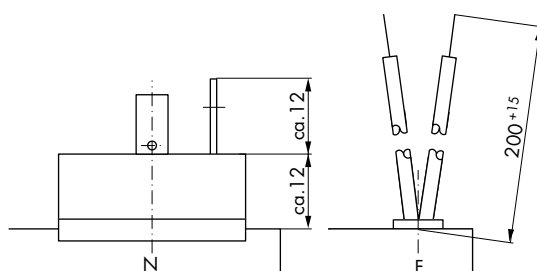


Impulse Automation Limited
United Kingdom
Company Registration 665193

Information shown in these data sheets are for guidance purposes only, no liability is accepted for any errors or omissions. The designer or user is solely responsible for the safe and proper use of these parts, assemblies or equipment described.

RM080 Series Ordering Information

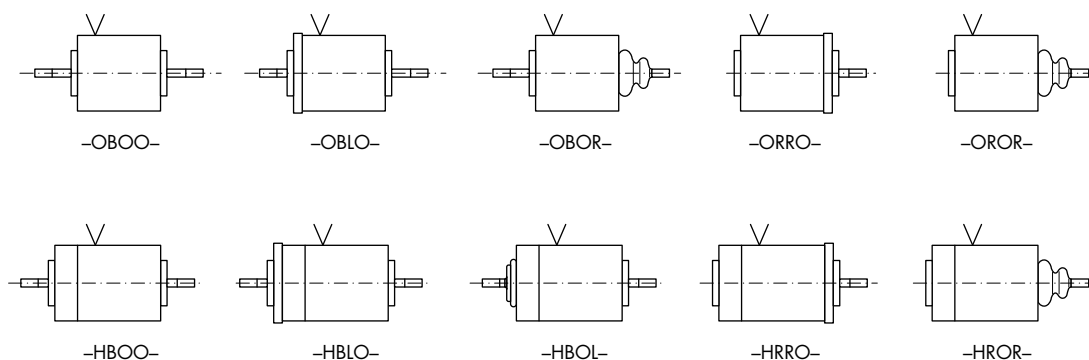
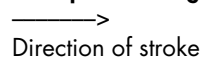
RM	O80	- W -	O	R	O	R	- N -	24 V DC	100 % ED	Order specifications	
RM										Linear solenoid series	
	O80									Design type Ø mm	
		W								Horizontal frontal force vs. stroke output	
										Description ²⁾	
			O							Stroke limit	without
			H								with
				R						Plunger	right hand side ³⁾
				B							both sides
					O					Flange	without
					R						right hand side ³⁾
					L						left hand side ⁴⁾
						O				Gaiter	without
						R					right hand side ³⁾
						L					left hand side ^{4) 5)}
						B					both sides ⁵⁾
							F			Coil terminals	Flying leads (20 cm standard length)
							N				plug-in socket connection ⁶⁾
								24		Operating voltage	24 V DC
								205			205 V DC (connected to 230 V AC with SI- bridge rectifier)
									100 % ED	Perm. duty cycle under air cooled conditions (LK)	



- 2) See below
- 3) Opposite to electrical connection
- 4) Same side as electrical connection
- 5) Available with stroke limit only
- 6) For plug-in socket 6.3 DIN 46247 and plug Z801 and Z811

Coil terminals

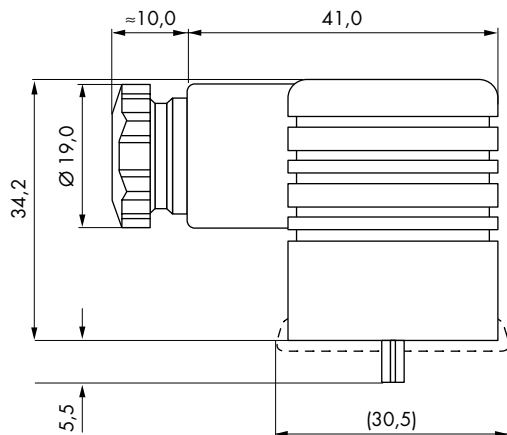
Examples of design types:



Impulse Automation Limited
United Kingdom
Company Registration 665193

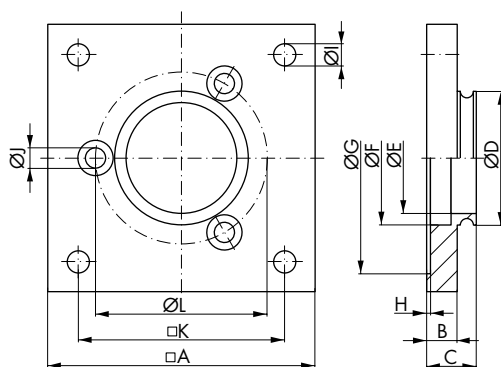
Information shown in these data sheets are for guidance purposes only, no liability is accepted for any errors or omissions. The designer or user is solely responsible for the safe and proper use of these parts, assemblies or equipment described.

RM080 Series Accessories



Plug-in socket Z801
Screw joint PG 9
for lead diameter 4.5 - 7 mm

Plug-in socket Z811
Screw joint PG 11
for lead diameter 6 - 9 mm
Plug-in socket with built in
Si-bridge rectifier

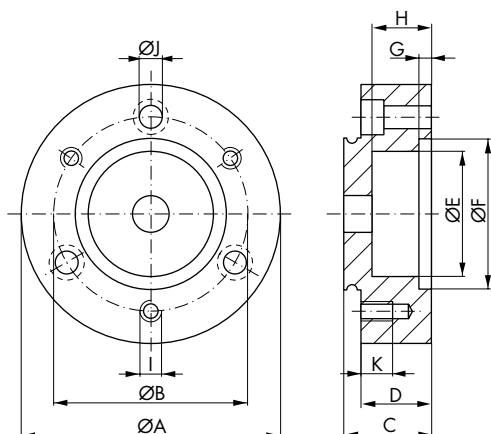


Flange
(Mounting screws are part of the
shipment)

Order specification

Order number	Type	Dimensions (mm)								Dimensions (mm)				Type	Order number
		A	B	C	D	E	F	G	H	I	J	K	L		
Z 842	RM 080	90,0	12,0	17,0	45,0	38,0	45,0	80,5	1,0	9,5	6,4	72,0	62,0	RM 080	Z 842

RM080 Series Accessories

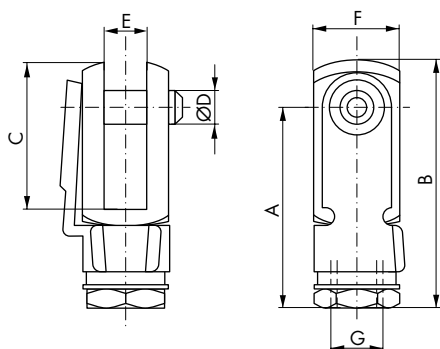


Stroke limiter

(Mounting screws are part of the shipment)

Order specification

Order number	Type	Dimensions (mm)										Dimensions (mm)		Type	Order number
		A	B	C	D	E	F	G	H	I	J	K			
Z 847	RM 080	80,0	62,0	30,0	25,0	38,0	45,0	5,5	20,0	M5	5,3	10,0	RM 080	Z 847	



Fork

Order-number	A	B	C	D	E	F	Connec-tion G
34.304	40	52	32	10	10	20	M10

Impulse Automation Limited
United Kingdom
Company Registration 665193

Information shown in these data sheets are for guidance purposes only, no liability is accepted for any errors or omissions.
The designer or user is solely responsible for the safe and proper use of these parts, assemblies or equipment described.