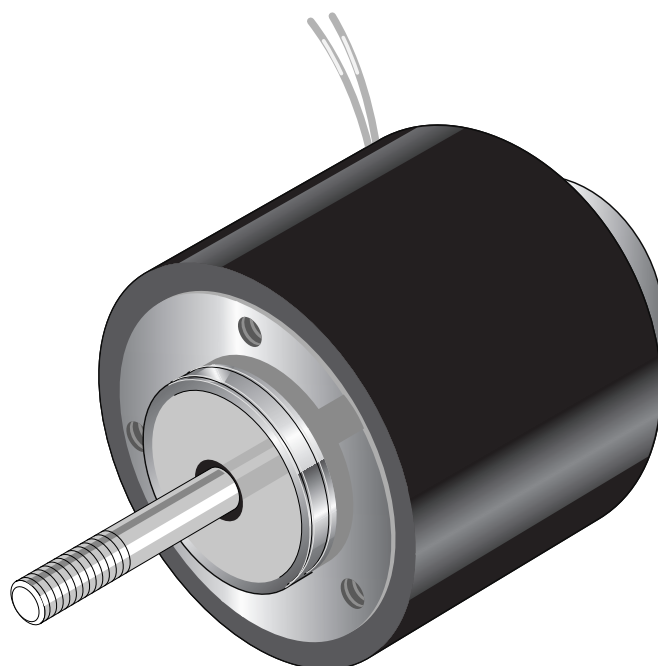


RM100 Series Linear Solenoid Push and/or Pull Type

Heavy duty linear solenoid RM 100

Weight:
Complete solenoid: appr. 6400 g
Armature: appr. 1100 g
Standard:
Voltage: 24 V DC
Flying leads: 20 cm
Insulation class: F (max. permissible temperature = 155 °C)

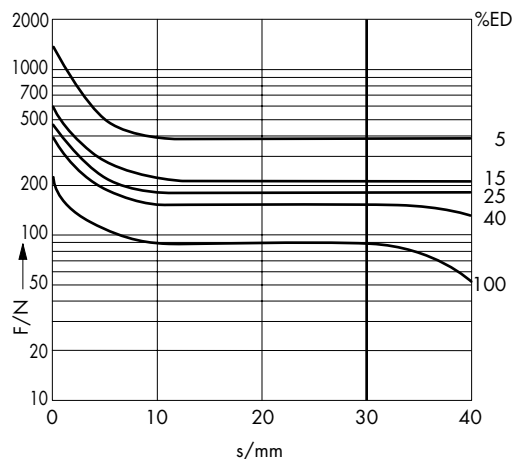


Service-free DU armature bearing for maximum durability.

Stroke of version with standard stroke limiter: 30 mm.

| | 100 | 40 | 25 | 15 | 5 | % Perm. duty Cycle (ED) ¹⁾ |
|--|-----|-----|-----|-----|------|---------------------------------------|
| | 69 | 162 | 255 | 400 | 1071 | W Nominal coil power P_n |
| | 110 | | | | 45 | ms Actuation time (ED) |

¹⁾ If solenoid is mounted directly onto a flat metal surface the duty cycle can be extended (please ask for advice)



Force vs. Stroke diagram $F = f(s)$

W = horizontal characteristic

Force measured when operating in horizontal position, at 90 % rated voltage and winding at operating temperature

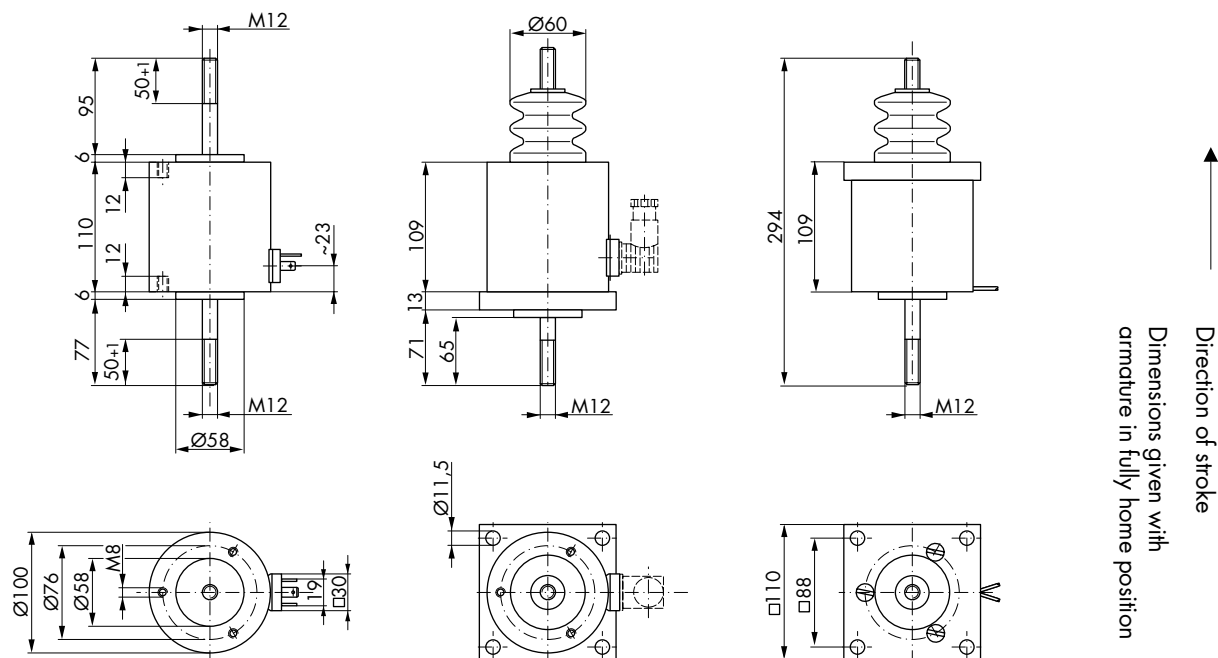
stroke $s = 0$ corresponds to armature in fully home position

Impulse Automation Limited
United Kingdom
Company Registration 665193

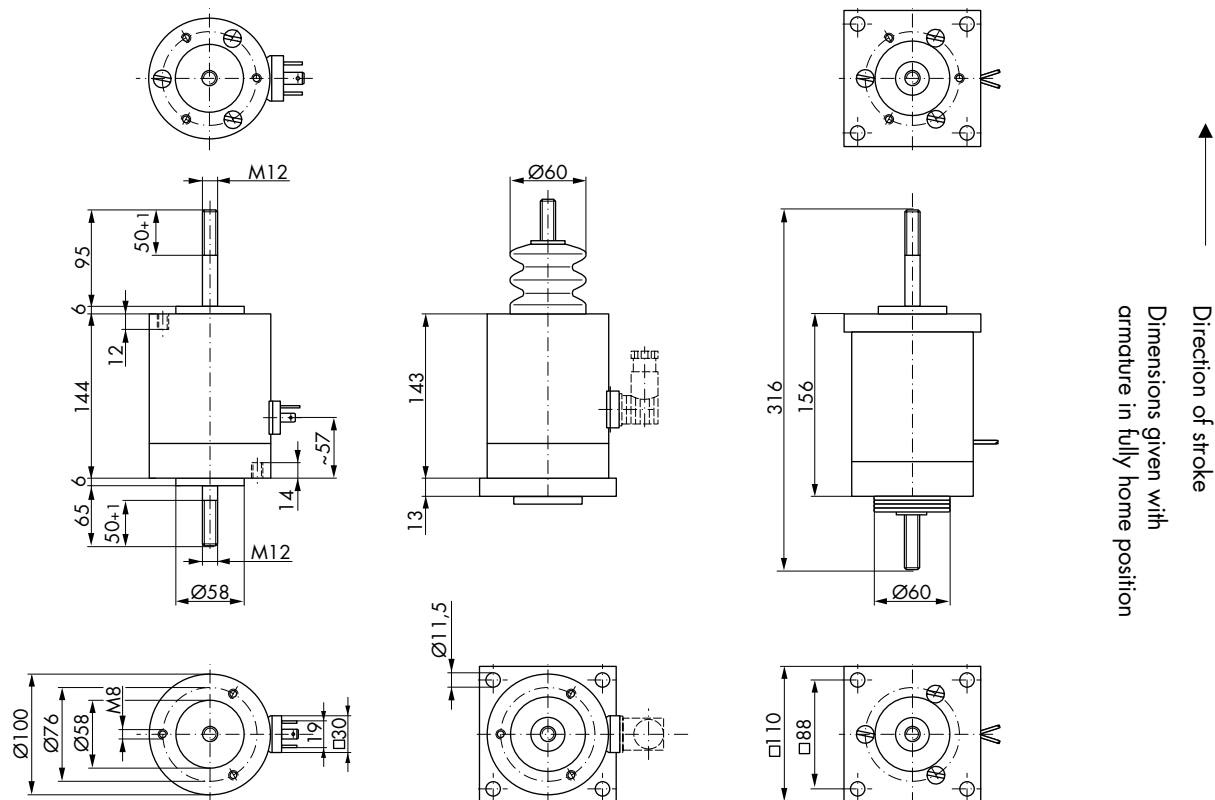
Information shown in these data sheets are for guidance purposes only, no liability is accepted for any errors or omissions. The designer or user is solely responsible for the safe and proper use of these parts, assemblies or equipment described.

RM100 Series Linear Solenoid Push and/or Pull Type

without stroke limiter



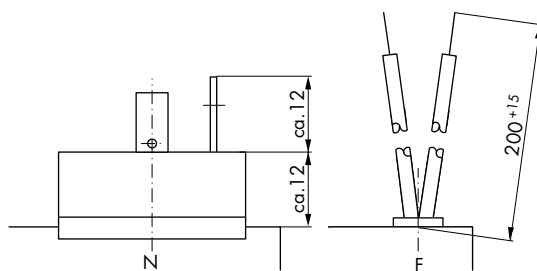
with stroke limiter



Impulse Automation Limited
United Kingdom
Company Registration 665193

Information shown in these data sheets are for guidance purposes only, no liability is accepted for any errors or omissions. The designer or user is solely responsible for the safe and proper use of these parts, assemblies or equipment described.

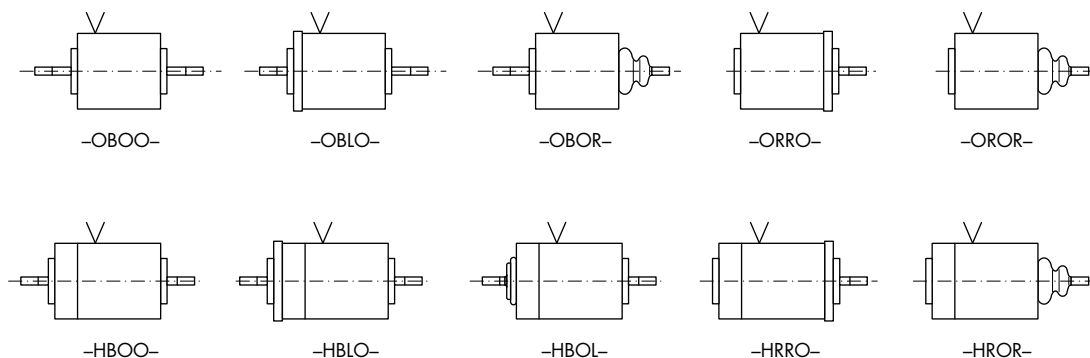
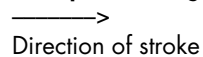
RM100 Series Ordering Information

[illegible]

- 2) See below
- 3) Opposite to electrical connection
- 4) Same side as electrical connection
- 5) Available with stroke limit only
- 6) For plug-in socket 6.3 DIN 46247 and plug Z801 and Z811

Coil terminals

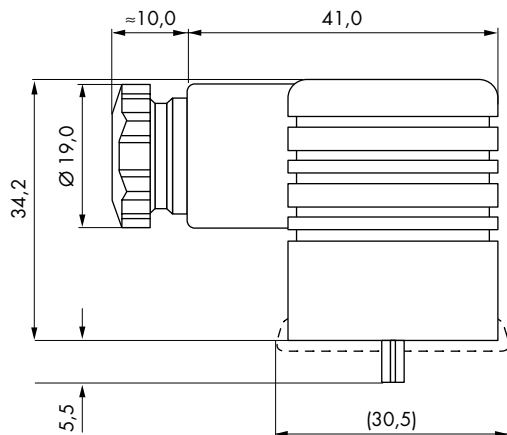
Examples of design types:



Impulse Automation Limited
United Kingdom
Company Registration 665193

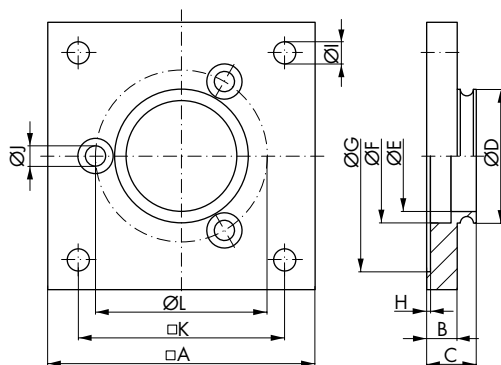
Information shown in these data sheets are for guidance purposes only, no liability is accepted for any errors or omissions. The designer or user is solely responsible for the safe and proper use of these parts, assemblies or equipment described.

RM100 Series Accessories



Plug-in socket Z801
Screw joint PG 9
for lead diameter 4.5 - 7 mm

Plug-in socket Z811
Screw joint PG 11
for lead diameter 6 - 9 mm
Plug-in socket with built in
Si-bridge rectifier

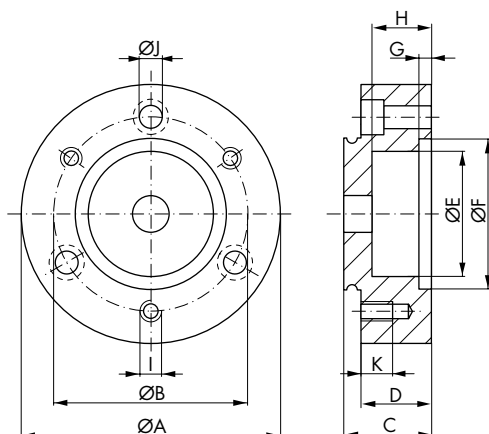


Flange
(Mounting screws are part of the shipment)

Order specification

| Order number | Type | Dimensions (mm) | | | | | | | | | | Dimensions (mm) | | | Type | Order number |
|--------------|--------|-----------------|------|------|------|------|------|-------|-----|------|-----|-----------------|------|--------|-------|--------------|
| | | A | B | C | D | E | F | G | H | I | J | K | L | | | |
| Z 844 | RM 100 | 110,0 | 13,0 | 19,0 | 58,0 | 49,0 | 58,0 | 100,5 | 1,0 | 11,5 | 8,4 | 88,0 | 76,0 | RM 100 | Z 844 | |

RM100 Series Accessories



Stroke limiter

(Mounting screws are part of the shipment)

Order specification

| Order number | Type | Dimensions (mm) | | | | | | | | | | Dimensions (mm) | | Type | Order number |
|--------------|--------|-----------------|------|------|------|------|------|-----|------|----|-----|-----------------|--------|-------|--------------|
| | | A | B | C | D | E | F | G | H | I | J | K | | | |
| Z 849 | RM 100 | 100,0 | 76,0 | 40,0 | 34,0 | 48,0 | 58,0 | 6,5 | 30,0 | M8 | 8,4 | 14,0 | RM 100 | Z 849 | |